

SWING TIES

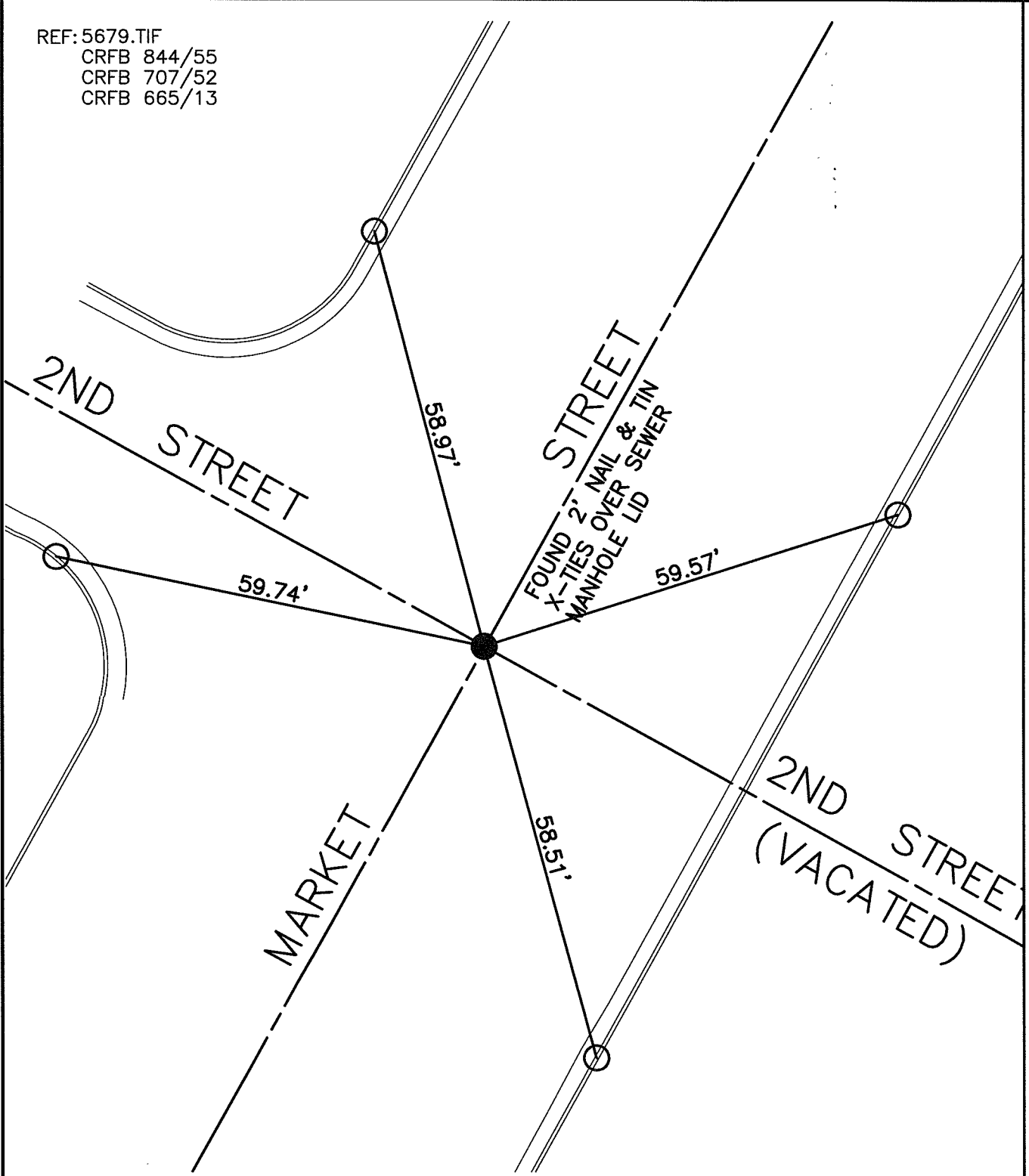
14331.TIF

STREET: MARKET STREET

X-STREET: 2ND STREET

OFFICIAL USE ONLY

REF: 5679.TIF
 CRFB 844/55
 CRFB 707/52
 CRFB 665/13



○ - SET NAIL & CITY TIE TAG IN T.C.

SCALE: 1"=20'

DATE: 4/01/15

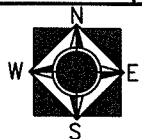
DRAWN BY: CURT

F.B.:

SEC: 23 T.2S.,R.5W

OFFICIAL TIE PLAT CITY OF RIVERSIDE

THESE TIES ARE FOR THE PURPOSE OF PERPETUATING THE FOUND MONUMENTATION. NO CLAIM IS MADE AS THE RELATIONSHIP OF THE POINTS OR LINES SHOWN HEREON TO TRUE BOUNDARY LOCATIONS



SHEET 1 OF 1