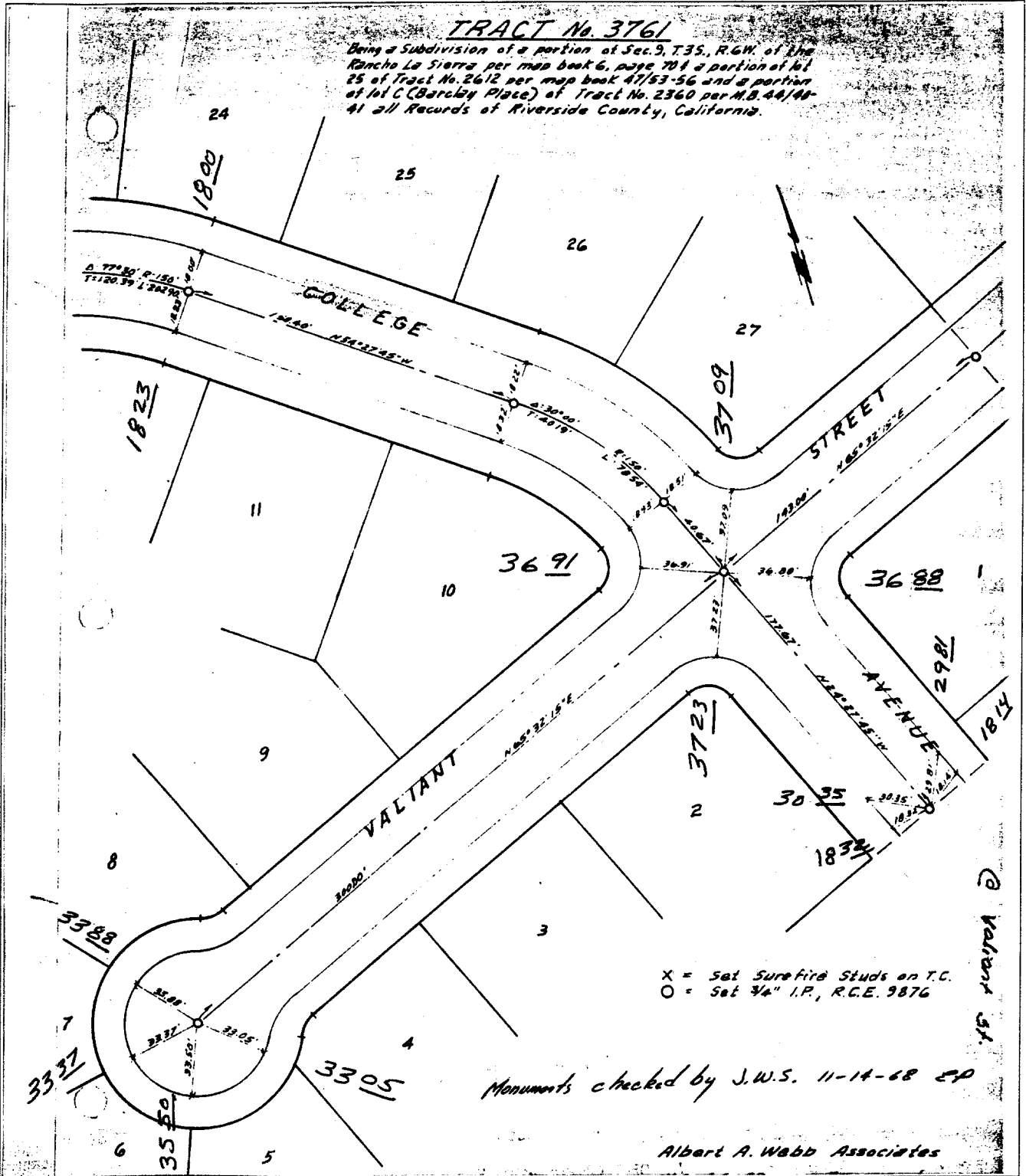


1438.117

TRACT No. 3761

Being a Subdivision of a portion of Sec. 9, T.35, R.6W. of the Rancho La Sierra per map book 6, page 701 a portion of lot 25 of Tract No. 2612 per map book 47/53-56 and a portion of lot C (Barclay Place) of Tract No. 2360 per M.B. 44/44-41 all Records of Riverside County, California.



X = Set Surefire Studs on T.C.
O = Set 3/4" I.P., R.C.E. 9876

Monuments checked by J.W.S. 11-14-68 EP

Albert A. Webb Associates

- ✕ FD. Ramset Nail on T/C
- FD. LD. & TK. on T/C
- FD. "C" Nail on T/C
- Set LD. & TK. on T/C

Street: COLLEGE AVE

OFFICIAL USE ONLY

X-Street: VALIANT ST.

@ Valiant St.

Scale:
Date:
Drawn by:
W.O.:
F.B.:

OFFICIAL TIE PLAT

CITY OF RIVERSIDE

These ties are for the purpose of perpetuating the found monumentation. No claim is made as to the relationship of the points or lines shown hereon to true boundary locations.

Sheet 1 of 1
File No.: