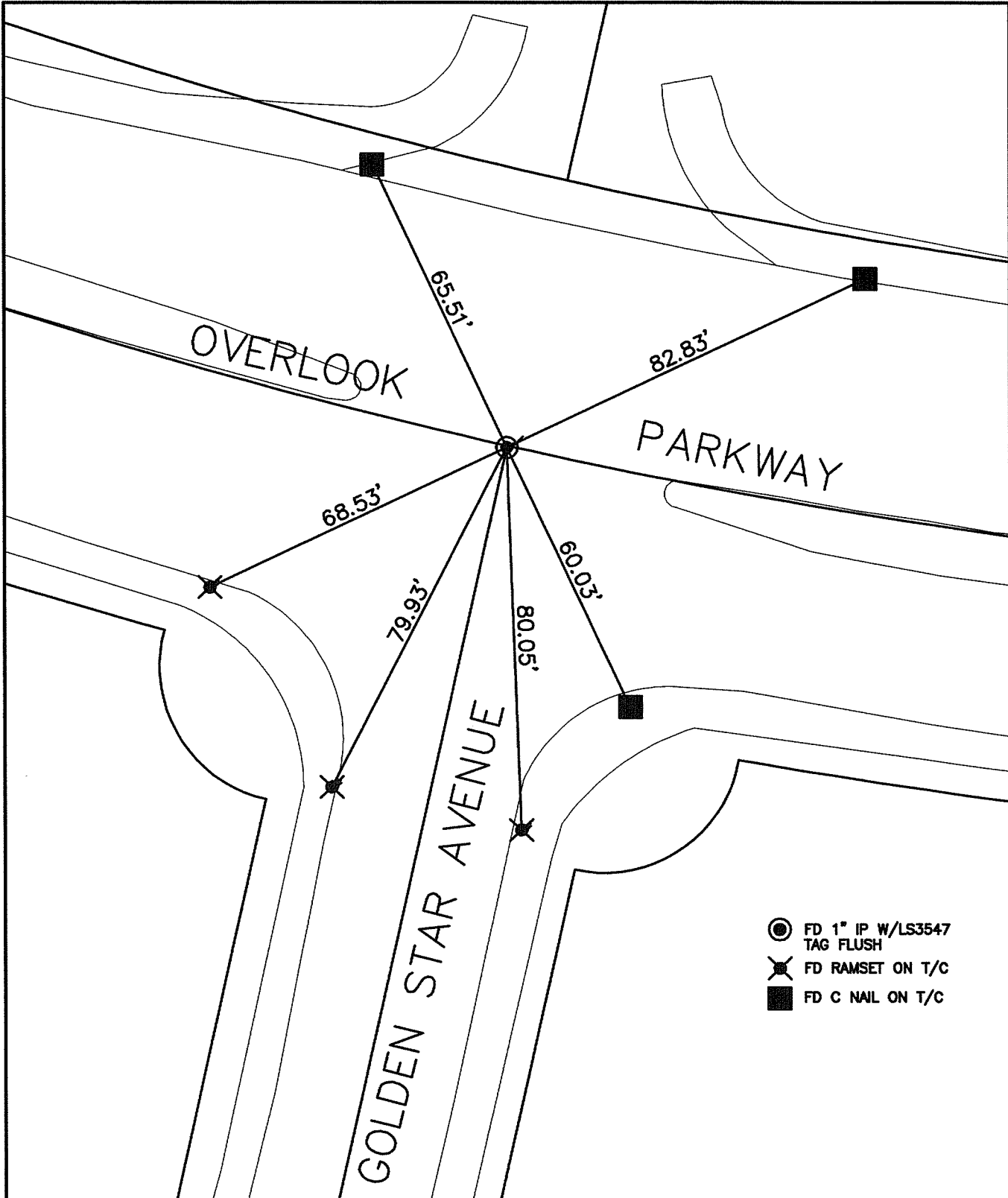





14382.TIF

STREET: OVERLOOK PARKWAY
X-STREET: GOLDEN STAR AVENUE
OFFICIAL USE ONLY

SWING TIES

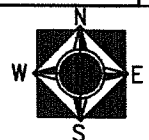


-  FD 1" IP W/LS3547 TAG FLUSH
-  FD RAMSET ON T/C
-  FD C NAIL ON T/C

SCALE: 1"=30'
 DATE: 14-12-01
 DRAWN BY: L. HARRIS
 F.B.:
 TR-SEC: T.3S., R.5W.-11

OFFICIAL TIE PLAT
 CITY OF RIVERSIDE

THESE TIES ARE FOR THE PURPOSE OF PERPETUATING THE FOUND MONUMENTATION. NO CLAIM IS MADE AS THE RELATIONSHIP OF THE POINTS OR LINES SHOWN HEREON TO TRUE BOUNDARY LOCATIONS



SHEET 1 OF 1
 Cadme MB: 69-6