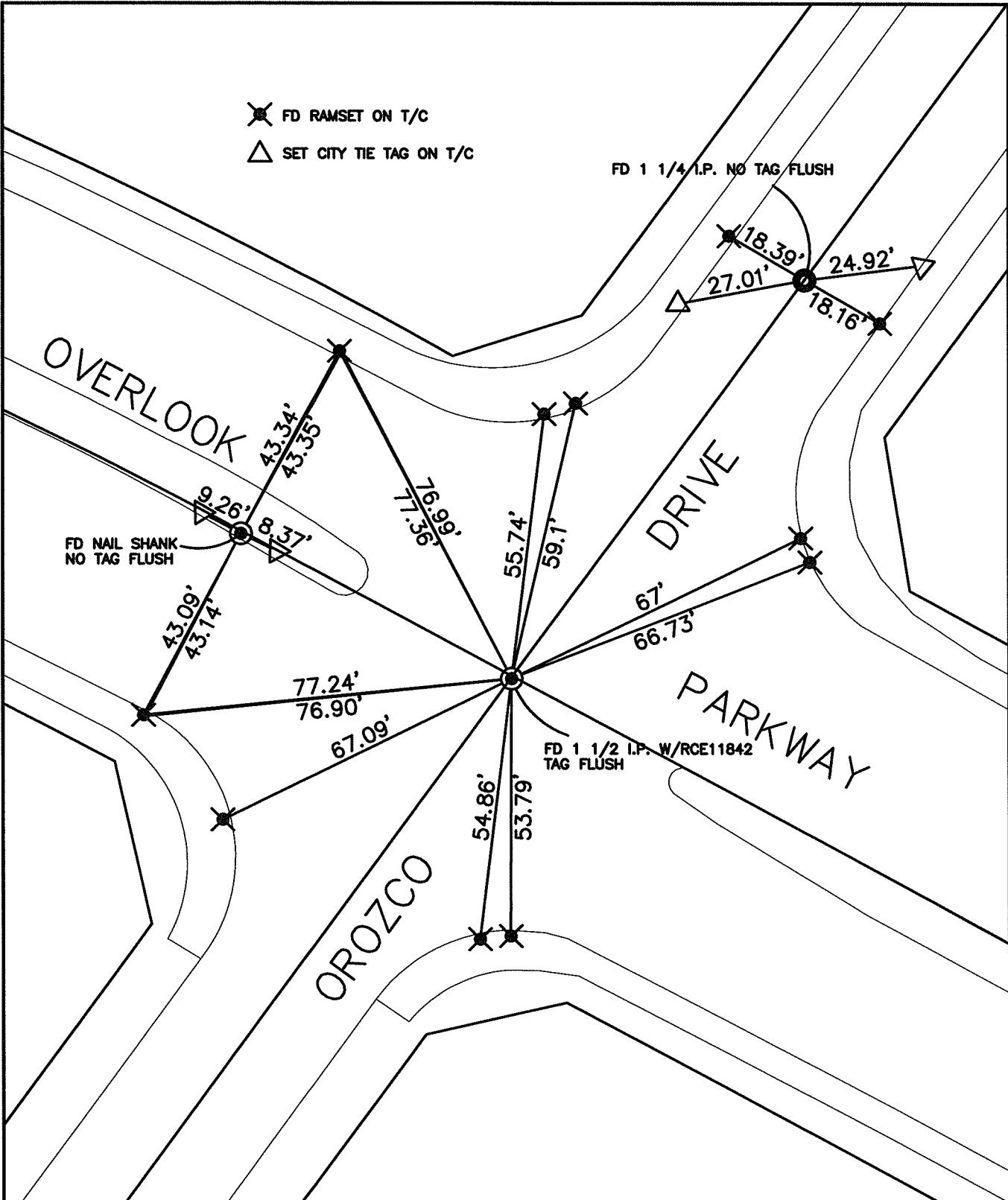


SWING TIES

14384.TIF

STREET: OVERLOOK PARKWAY X-STREET: OROZCO DRIVE  
 OFFICIAL USE ONLY



SCALE: 1"=30'  
 DATE: 14-12-06  
 DRAWN BY: L. HARRIS  
 F.B.:  
 TR-SEC: T.3S., R.5W.-12

OFFICIAL TIE PLAT  
 CITY OF RIVERSIDE

THESE TIES ARE FOR THE PURPOSE OF PERPETUATING THE FOUND MONUMENTATION. NO CLAIM IS MADE AS THE RELATIONSHIP OF THE POINTS OR LINES SHOWN HEREON TO TRUE BOUNDARY LOCATIONS

SHEET 1 OF 1  
 Cadme MB: 70-8