

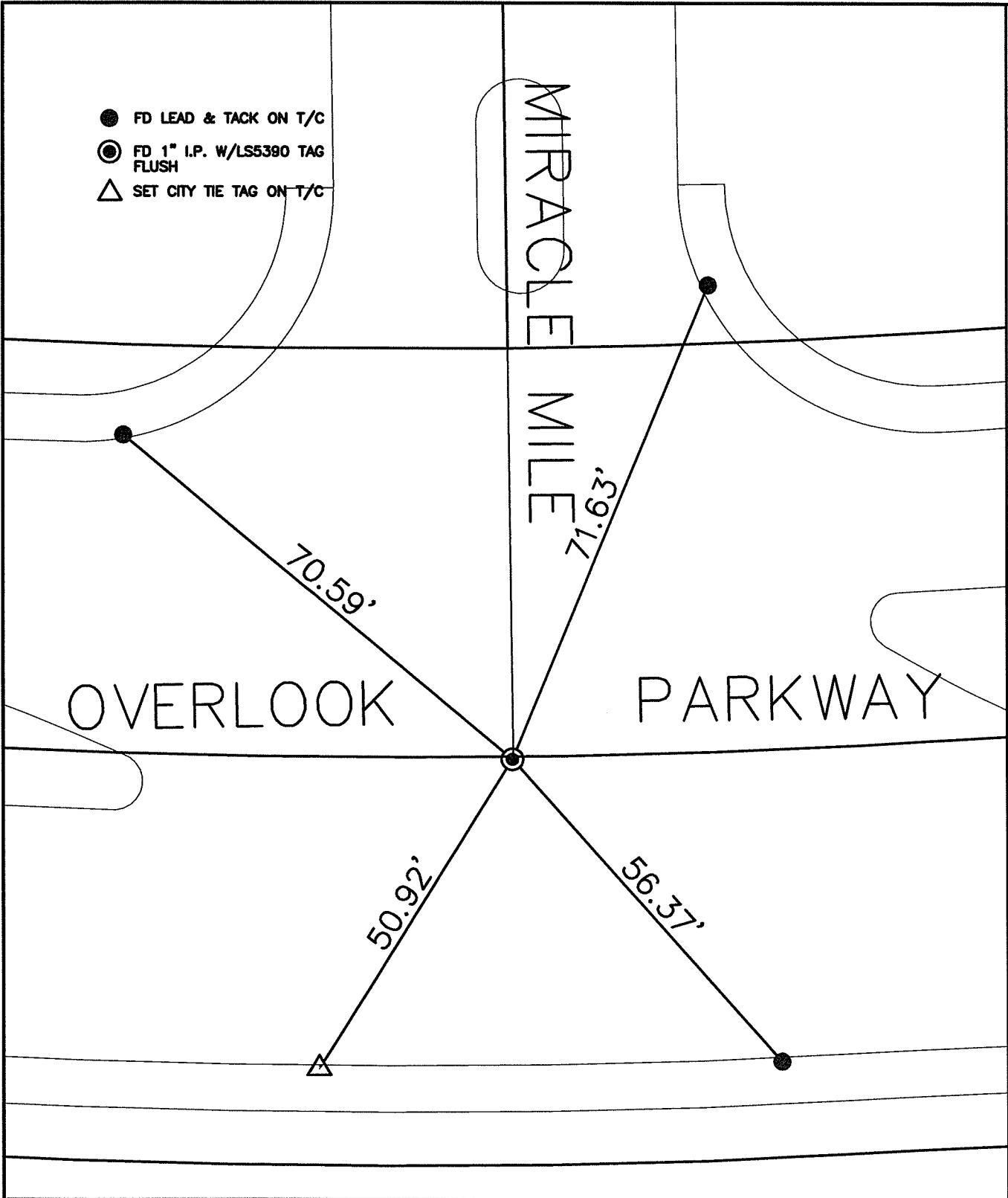
SWING TIES

14387.71E

STREET: OVERLOOK PARKWAY

X-STREET: OFFICIAL USE ONLY

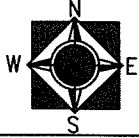
MIRACLE MILE



SCALE: 1"=20'
 DATE: 14-12-06
 DRAWN BY: L. HARRIS
 F.B.:
 TR-SEC: T.3S., R.5W.-12

OFFICIAL TIE PLAT
 CITY OF RIVERSIDE

THESE TIES ARE FOR THE PURPOSE OF PERPETUATING THE FOUND MONUMENTATION. NO CLAIM IS MADE AS THE RELATIONSHIP OF THE POINTS OR LINES SHOWN HEREON TO TRUE BOUNDARY LOCATIONS



SHEET 1 OF 1
 Cadme MB: 70-8