

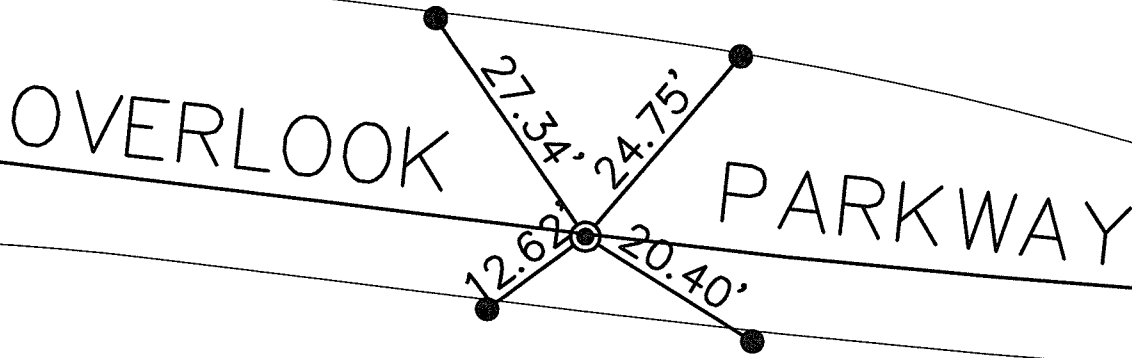
SWING TIES

14388.TIF

OVERLOOK PARK WAY

OFFICIAL USE ONLY  
X-STREET: EC W OF MIRACLE MILE

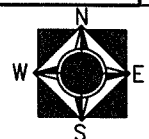
- ⊙ FD 1" I.P. W/LS 5390  
TAG DN. 0.5"
- FD LEAD & TACK ON T/C



SCALE: 1"=20'  
DATE: 14-12-06  
DRAWN BY: L. HARRIS  
F.B.:  
TR-SEC: T.3S., R.5W.-12

OFFICIAL TIE PLAT  
CITY OF RIVERSIDE

THESE TIES ARE FOR THE PURPOSE OF PERPETUATING THE FOUND MONUMENTATION. NO CLAIM IS MADE AS THE RELATIONSHIP OF THE POINTS OR LINES SHOWN HEREON TO TRUE BOUNDARY LOCATIONS



SHEET 1 OF 1  
Cadme MB: 70-8