

14391.71E

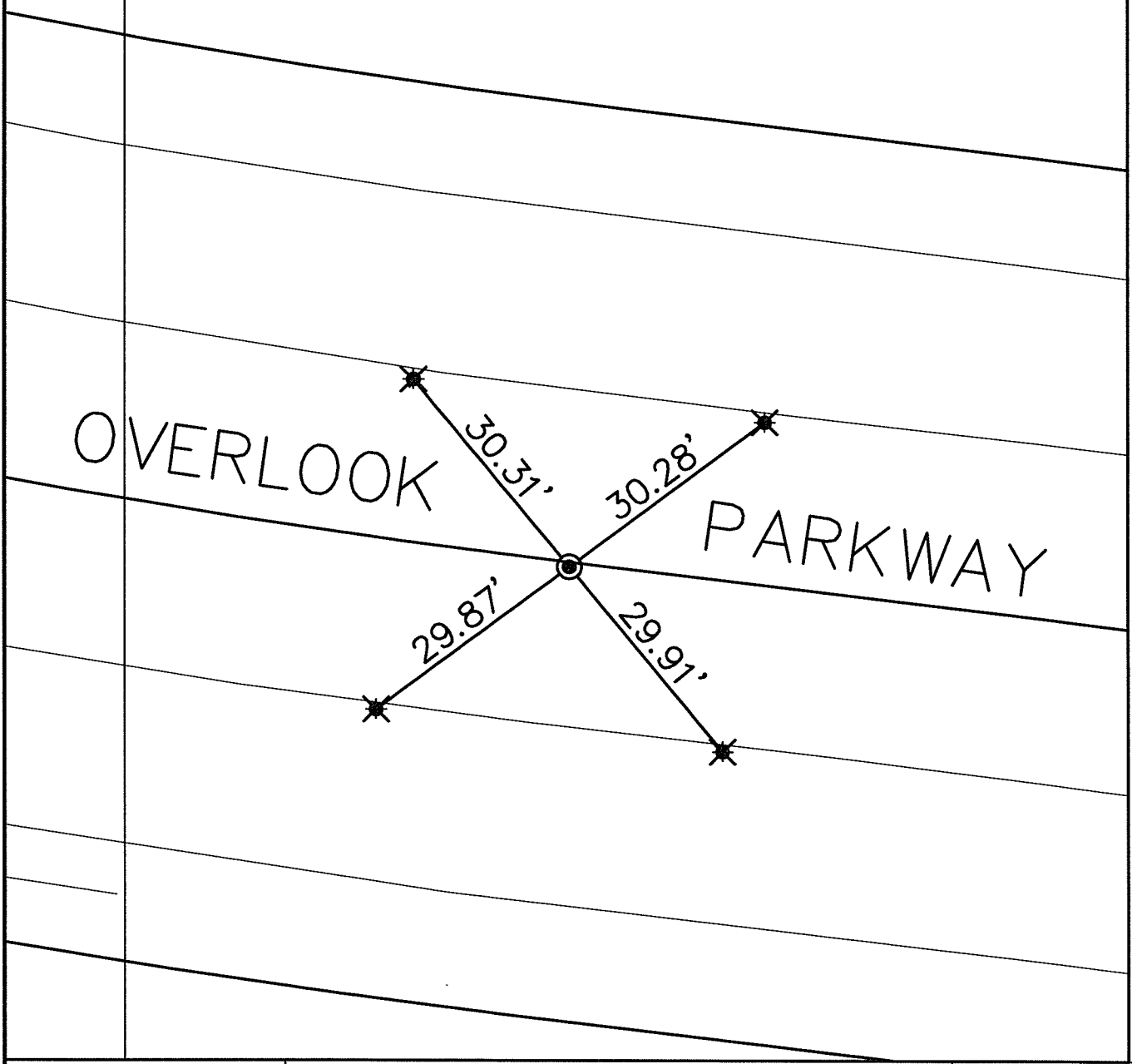
STREET: OVERLOOK PARKWAY

OFFICIAL USE ONLY

X-STREET:

WEST OF CHATEAU RIDGE

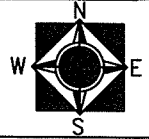
- FD 1" I.P. W/LS3547 TAG  
FLUSH
- ✱ FD RAMSET ON T/C



SCALE: 1"=20'  
 DATE: 14-12-06  
 DRAWN BY: L. HARRIS  
 F.B.:  
 TR-SEC: T.3S., R.5W.-12

OFFICIAL TIE PLAT  
 CITY OF RIVERSIDE

THESE TIES ARE FOR THE PURPOSE OF PERPETUATING THE FOUND MONUMENTATION. NO CLAIM IS MADE AS THE RELATIONSHIP OF THE POINTS OR LINES SHOWN HEREON TO TRUE BOUNDARY LOCATIONS



SHEET 1 OF 1  
 Cadme MB: 70-7