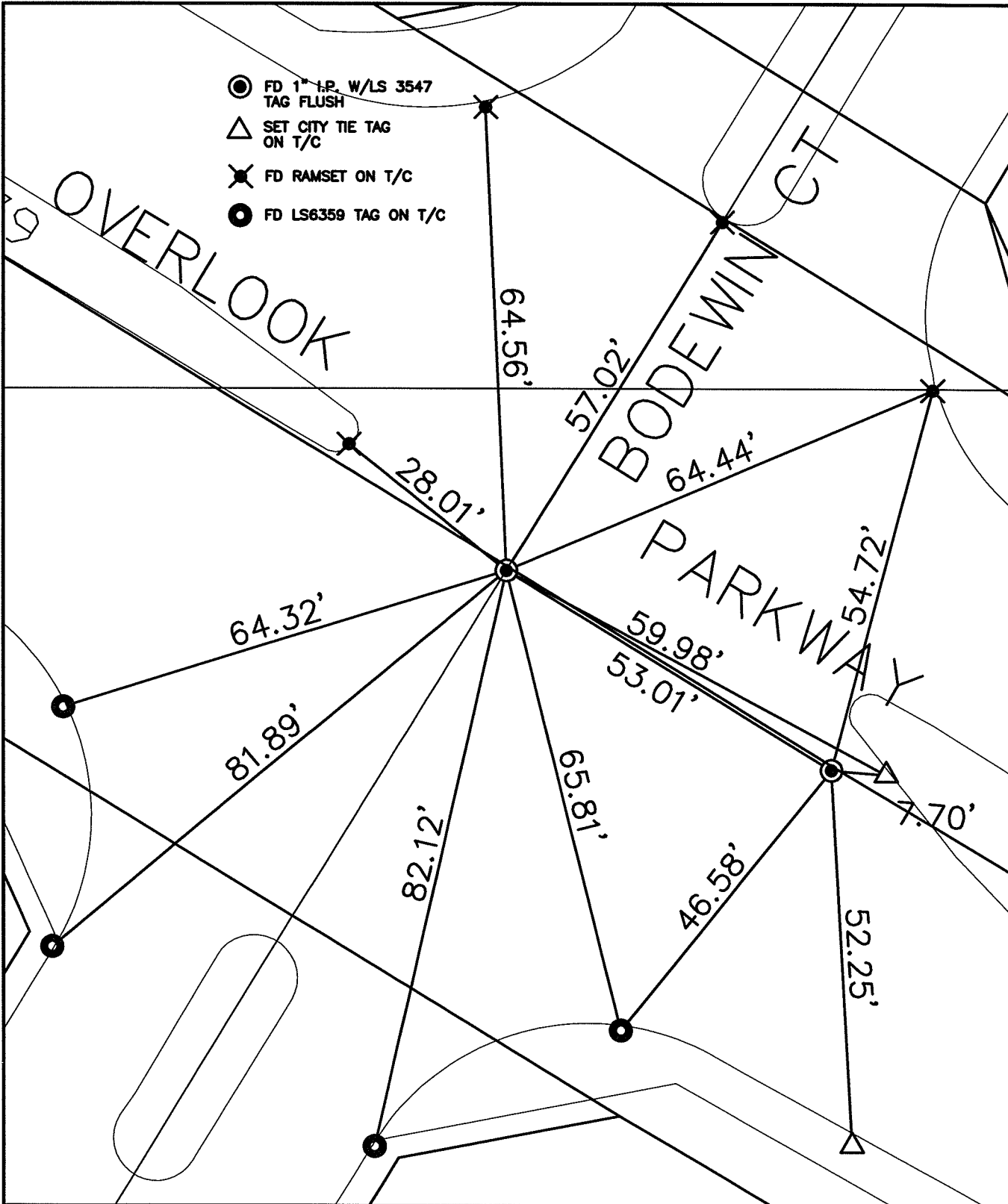


SWING TIES

14392.TIF

STREET: OVERLOOK PARKWAY X-STREET: BODEWIN COURT
OFFICIAL USE ONLY

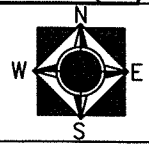
- FD 1" I.P. W/LS 3547 TAG FLUSH
- △ SET CITY TIE TAG ON T/C
- ✕ FD RAMSET ON T/C
- FD LS6359 TAG ON T/C



SCALE: 1"=20'
 DATE: 14-12-06
 DRAWN BY: L. HARRIS
 F.B.:
 TR-SEC: T.3S., R.5W.-12

OFFICIAL TIE PLAT
 CITY OF RIVERSIDE

THESE TIES ARE FOR THE PURPOSE OF PERPETUATING THE FOUND MONUMENTATION. NO CLAIM IS MADE AS THE RELATIONSHIP OF THE POINTS OR LINES SHOWN HEREON TO TRUE BOUNDARY LOCATIONS



SHEET 1 OF 1
 Cadme MB: 70-7