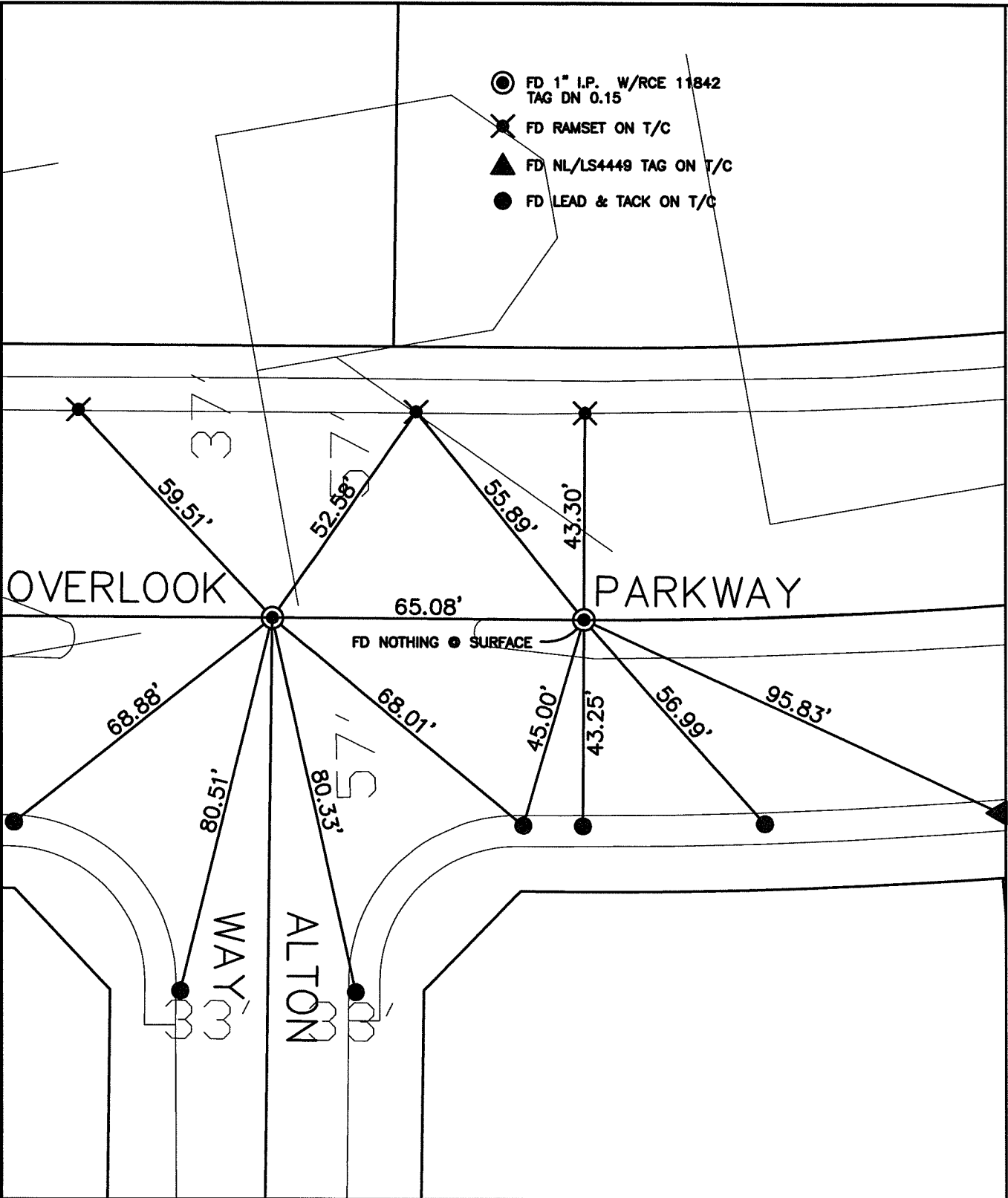


SWING TIES

14399.3.TIF


STREET: OVERLOOK PARKWAY
 X-STREET: ALTON WAY
 OFFICIAL USE ONLY



SCALE: 1"=30'
 DATE: 14-12-06
 DRAWN BY: L. HARRIS
 F.B.:
 TR-SEC: T.3S., R.5W.-11

OFFICIAL TIE PLAT
 CITY OF RIVERSIDE

THESE TIES ARE FOR THE PURPOSE OF PERPETUATING THE FOUND MONUMENTATION. NO CLAIM IS MADE AS THE RELATIONSHIP OF THE POINTS OR LINES SHOWN HEREON TO TRUE BOUNDARY LOCATIONS



SHEET 1 OF 1
 Cadme MB: 70-8