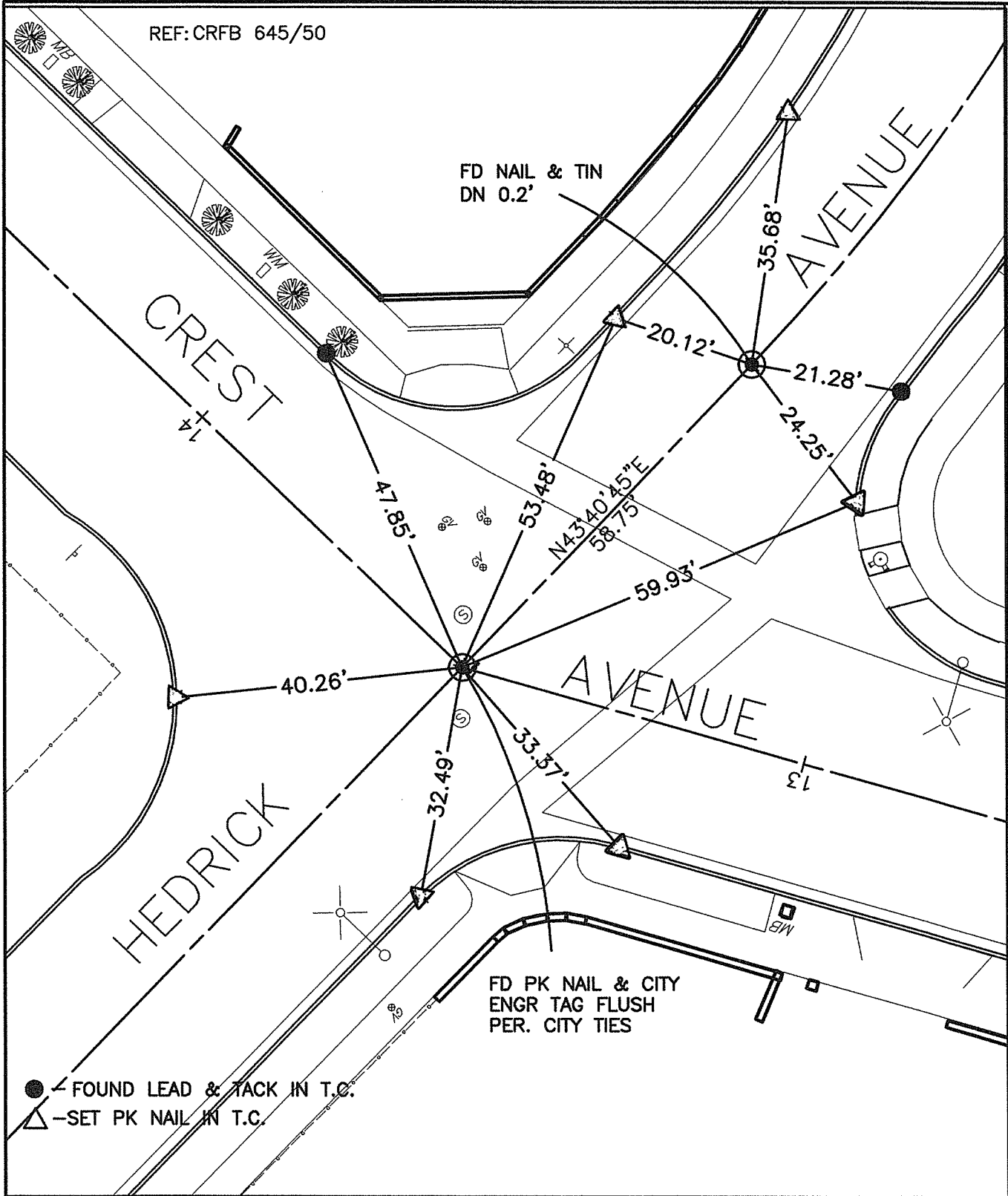


SWING TIES

14394.T1F



STREET: CREST AVENUE

OFFICIAL USE ONLY

X-STREET: HEDRICK AVENUE

SCALE: 1"=20'
DATE: 08/14/15
DRAWN BY: L HARRIS
F.B.:
SEC: T.3S., R.6W-2

OFFICIAL TIE PLAT CITY OF RIVERSIDE

THESE TIES ARE FOR THE PURPOSE OF PERPETUATING THE FOUND MONUMENTATION. NO CLAIM IS MADE AS THE RELATIONSHIP OF THE POINTS OR LINES SHOWN HEREON TO TRUE BOUNDARY LOCATIONS

SHEET 1 OF 1