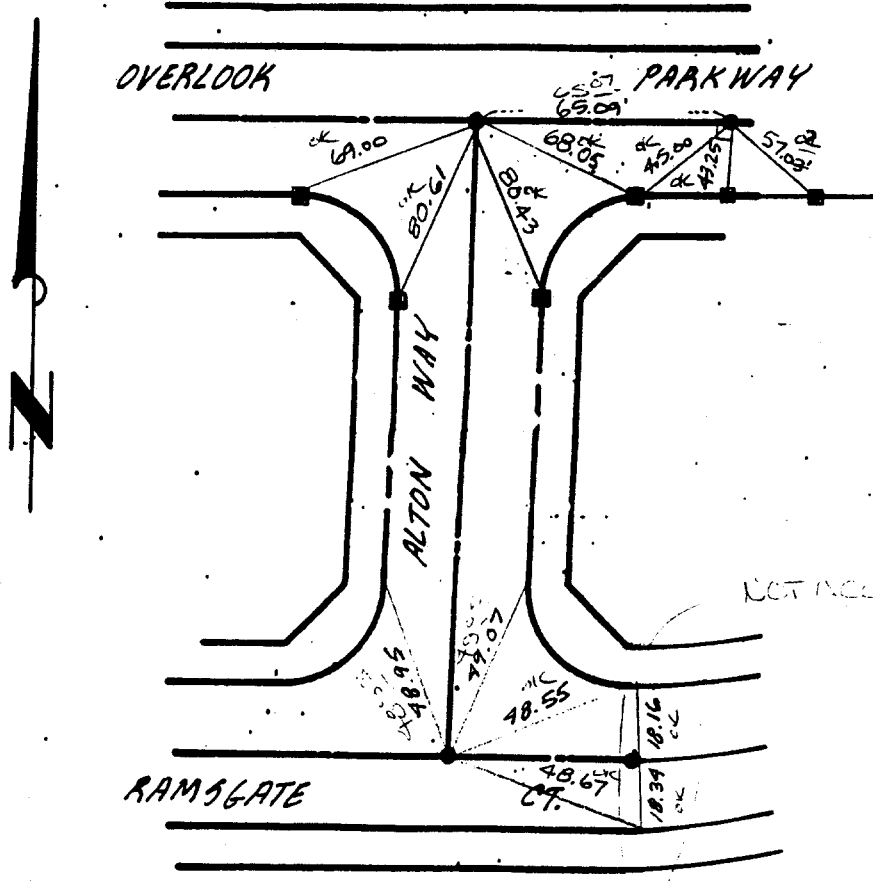


STREET ALTON WAY X-STREET OVERLOOK PARKWAY
OFFICE USE ONLY

144.71F

TIES TR. 21010-1



NOT NECESSARY

ALTON WAY
OVERLOOK
RAMSGATE

- DENOTES SET 1" IP FLUSH RCE 21740
- DENOTES SET LEAD & TACK

- ✕ FD. Ramset Nail on T/C
- FD. LD. & TK. on T/C
- FD. "C" Nail on T/C
- SET LD. & TK. On T/C

SCALE:	OFFICIAL TIE PLAT	SHEET	
DATE:			
DR. BY:	CITY OF RIVERSIDE	OF SHEETS	
W.O.:			
F.B.:			FILE NO.:
<i>These ties are for the purpose of perpetuating the found monumentation. No claim is made as to the relationship of the points or lines shown hereon to true boundary locations.</i>			