

14407.T1F

Street:

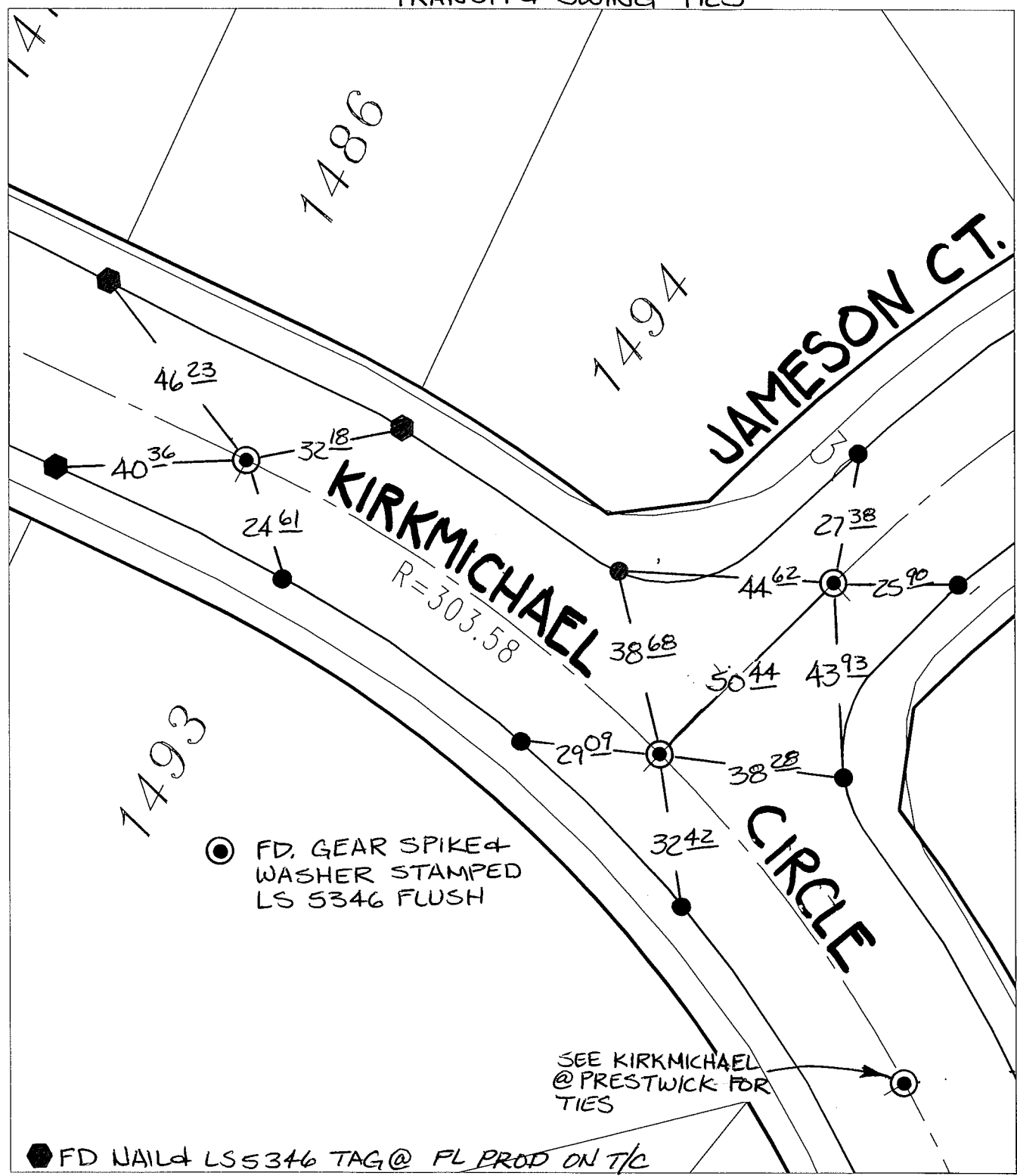
KIRKMICHAEL CIRCLE

OFFICIAL USE ONLY

X-Street:

JAMESON COURT

TRANSIT & SWING TIES



⊙ FD. GEAR SPIKE & WASHER STAMPED LS 5346 FLUSH

SEE KIRKMICHAEL @ PRESTWICK FOR TIES

● FD NAIL & LS 5346 TAG @ FL PROD ON T/C

- ✕ FD. Ramset Nail on T/C
- FD. LD. & TK. on T/C
- FD. "C" Nail on T/C
- Set LD. & TK. on T/C
- P.K. and City Engineer tag to be set @ surface after street construction is complete. (If possible)

Scale: 1" = 30'

Date: 07/25/15

Drawn by: pw

F.B.:

TR-Sec: T2SR4W-33

OFFICIAL TIE PLAT

CITY OF RIVERSIDE



These ties are for the purpose of perpetuating the found monumentation. No claim is made as to the relationship of the points or lines shown hereon to true boundary locations.

Sheet 1 of 1

Cadme MB: 58-3