

14408TJE

Street: KIRKMICHAEL CIRCLE

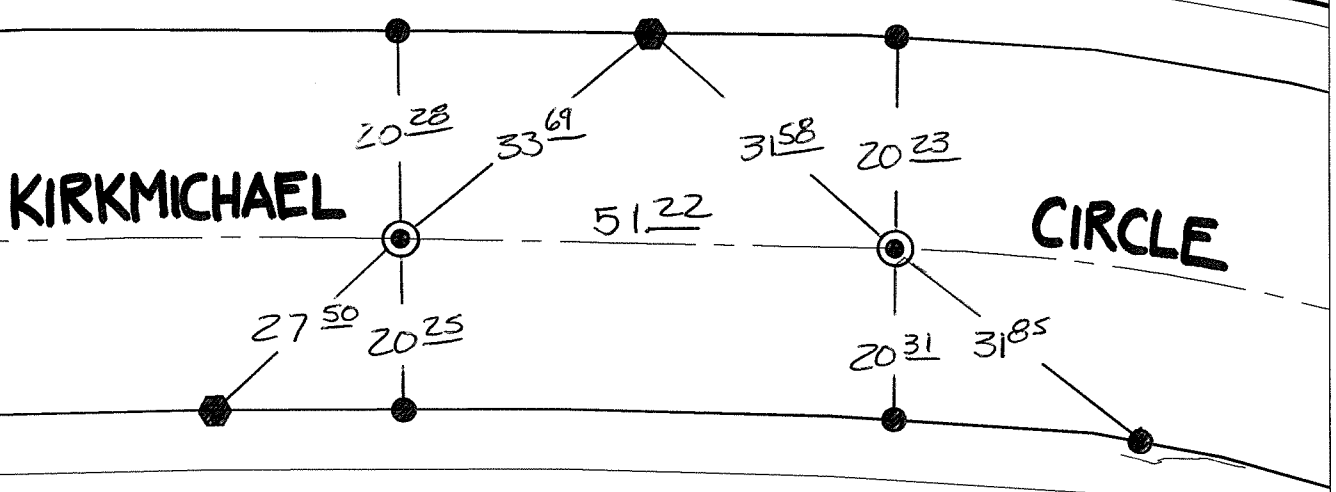
OFFICIAL USE ONLY X-Street:

EC & BC

TRANSIT & SWING TIES

1326

1334



⊙ FD GEAR SPIKE & WASHER STAMPED LS 5346 FLUSH

331

● FD NAIL & TAG STAMPED LS 5346 FLUSH W/ PL PROD T/C.

- ✕ FD. Ramset Nail on T/C
  - FD. LD. & TK. on T/C
  - FD. "C" Nail on T/C
  - Set LD. & TK. on T/C
- P.K. and City Engineer tag to be set @ surface after street construction is complete. (If possible)*

Scale: 1" = 20'

Date: 07/25/15

Drawn by: pw

F.B.:

TR-Sec: T2SR4W-33

**OFFICIAL TIE PLAT**  
CITY OF RIVERSIDE

*These ties are for the purpose of perpetuating the found monumentation. No claim is made as to the relationship of the points or lines shown hereon to true boundary locations.*

Sheet 1 of 1

Cadme MB: 57-4