

1411.TIF

Street:

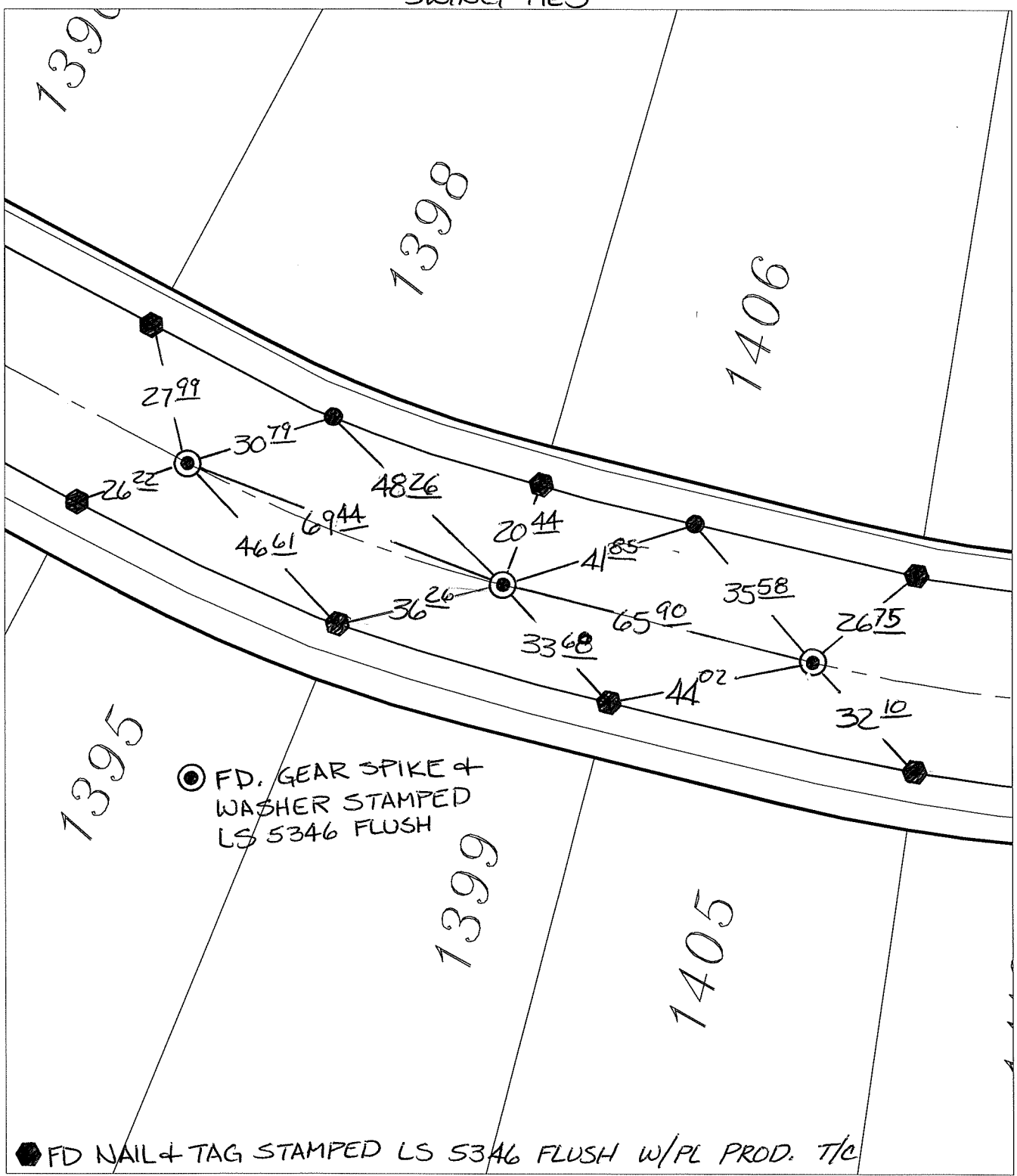
KIRKMICHAEL CIRCLE

X-Street:

BC & EC & BC

OFFICIAL USE ONLY

SWING TIES



⊙ FD. GEAR SPIKE & WASHER STAMPED LS 5346 FLUSH

● FD NAIL & TAG STAMPED LS 5346 FLUSH W/PL PROD. T/C

- ✕ FD. Ramset Nail on T/C
- FD. LD. & TK. on T/C
- FD. "C" Nail on T/C
- Set LD. & TK. on T/C

P.K. and City Engineer tag to be set @ surface after street construction is complete. (If possible)

Scale: 1" = 30'

Date: 07/25/15

Drawn by: pw

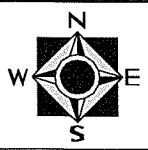
F.B.:

TR-Sec: T2SR4W-33

## OFFICIAL TIE PLAT

### CITY OF RIVERSIDE

*These ties are for the purpose of perpetuating the found monumentation. No claim is made as to the relationship of the points or lines shown hereon to true boundary locations.*



Sheet 1 of 1

Cadme MB: 58-3