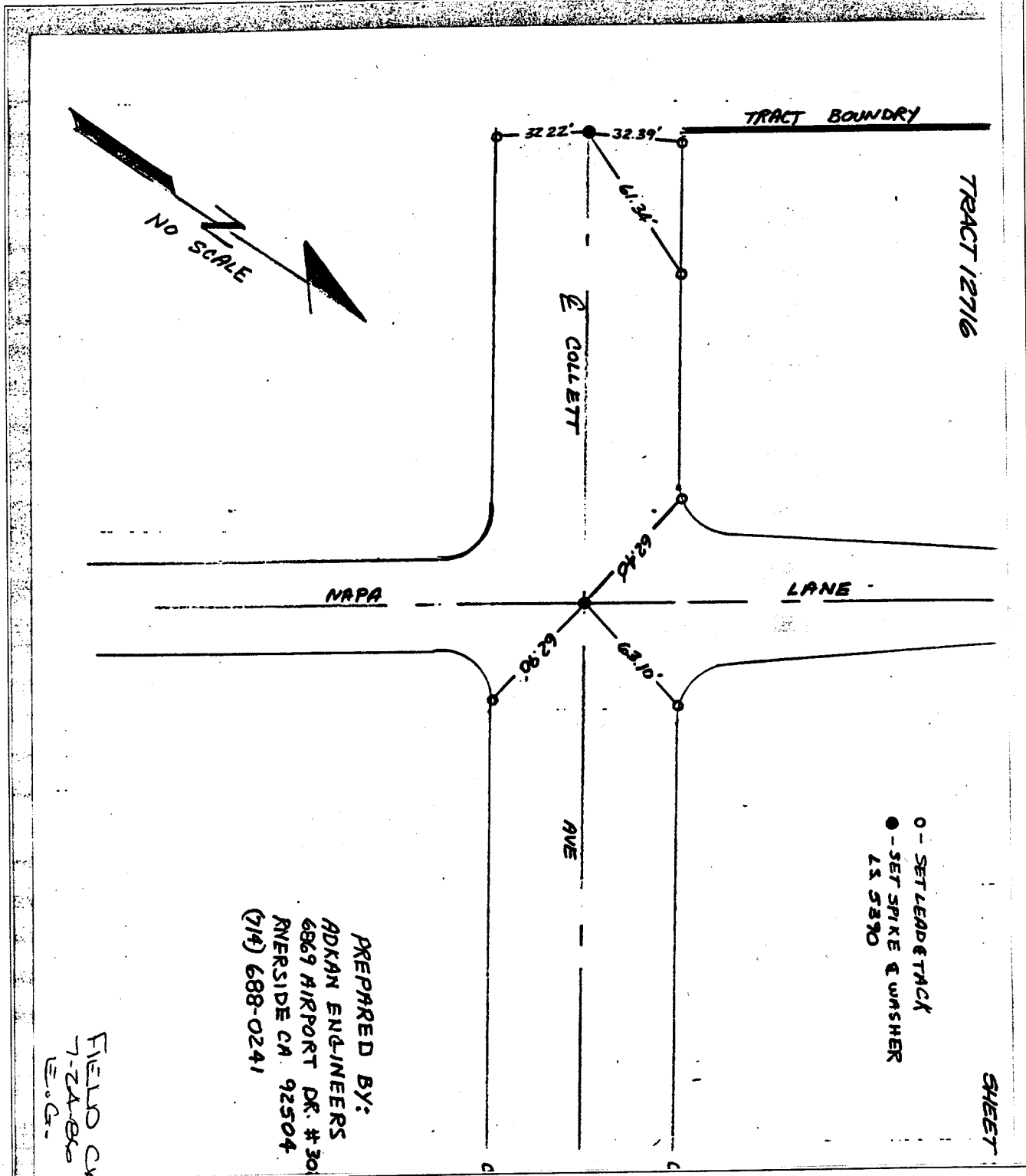


1442. TIF

Street: COLLETT AVE

X-Street: OFFICIAL USE ONLY

NAPA LN.



PREPARED BY:
 ADKAM ENGINEERS
 6869 AIRPORT DR. #30
 RIVERSIDE CA. 92504
 (714) 688-0241

FIELD BY
 7-24-86
 E.C.

- ✕ FD. Ramset Nail on T/C
- FD. "C" Nail on T/C

- FD. LD. & TK. on T/C
- Set LD. & TK. on T/C

OFFICIAL TIE PLAT

CITY OF RIVERSIDE

These ties are for the purpose of perpetuating the found monumentation. No claim is made as to the relationship of the points or lines shown hereon to true boundary locations.

Scale: _____

Date: _____

Drawn by: _____

W.O.: _____

F.B.: _____

Sheet 1 of 1

File No.: _____