

14421.T1F

Street:

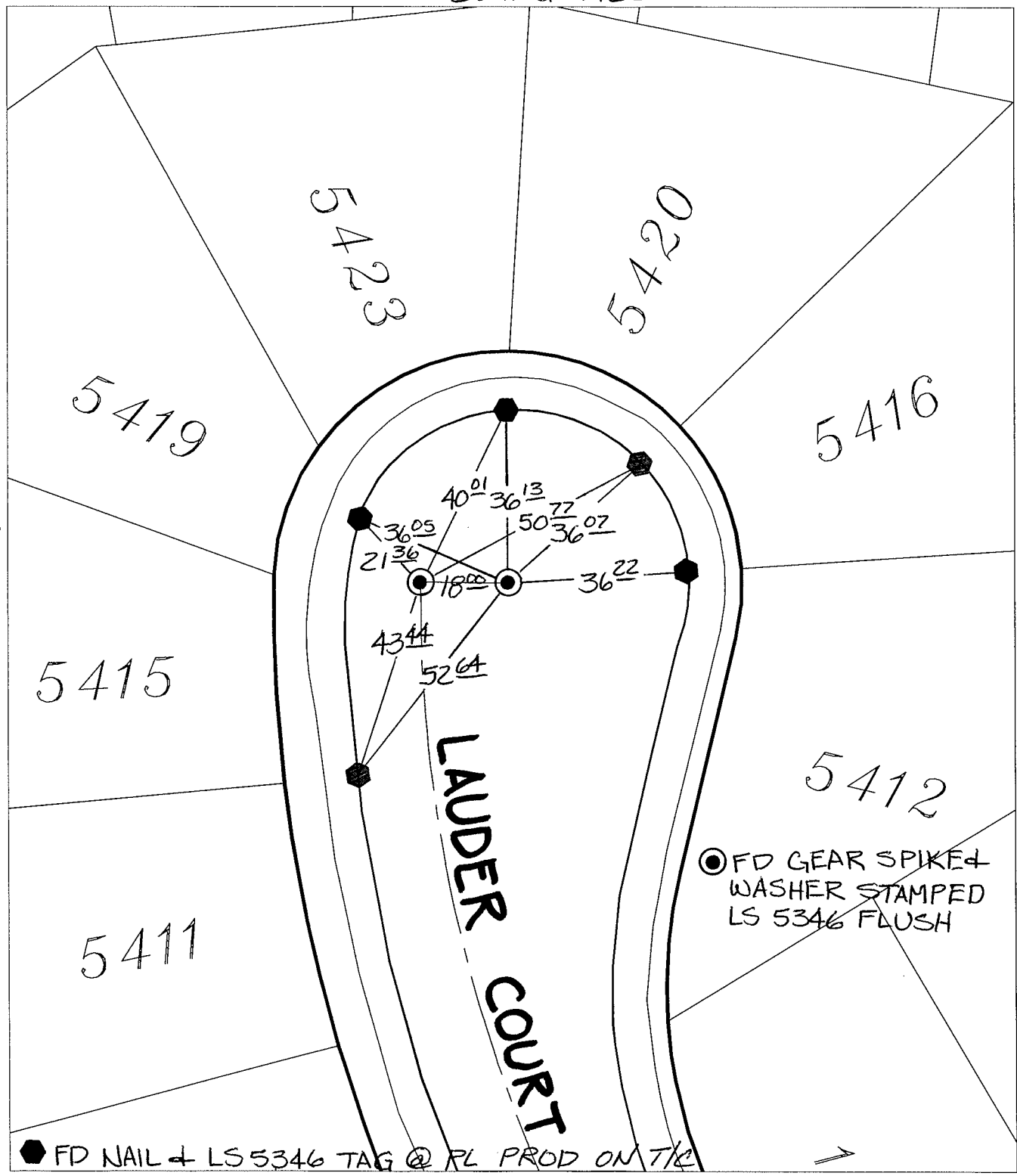
LAUDER COURT

OFFICIAL USE ONLY

X-Street:

CUL-DE-SAC

SWING TIES



○ FD GEAR SPIKE & WASHER STAMPED LS 5346 FLUSH

● FD NAIL & LS 5346 TAG @ PL PROD ON T/C

- × FD. Ramset Nail on T/C
- FD. LD. & TK. on T/C
- FD. "C" Nail on T/C
- Set LD. & TK. on T/C
- P.K. and City Engineer tag to be set @ surface after street construction is complete. (If possible)

Scale: 1" = 30'

Date: 08/01/15


Drawn by: pw

F.B.:

TR-Sec: T2SR4W-33

**OFFICIAL TIE PLAT**  
CITY OF RIVERSIDE

*These ties are for the purpose of perpetuating the found monumentation. No claim is made as to the relationship of the points or lines shown hereon to true boundary locations.*

  
 Sheet 1 of 1  
 Cadme MB: 58-3