

14429.TIF

Street:

HADDINGTON DRIVE

OFFICIAL USE ONLY

X-Street:

LOCKLAN COURT

SWING TIES

5419

5424

5416

5413

541

5405

1454

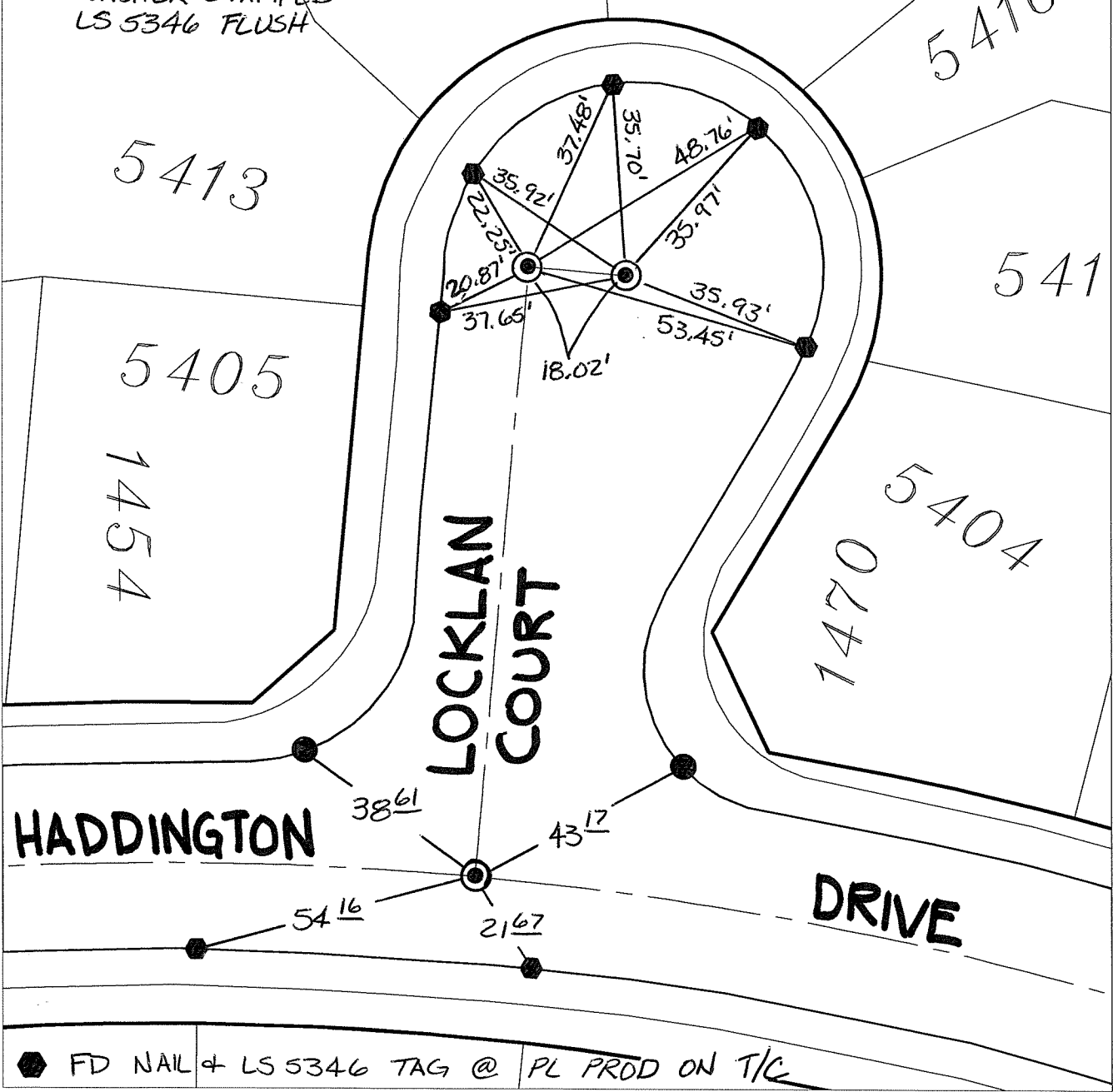
LOCKLAN COURT

1470 5404

HADDINGTON

DRIVE

⊙ FD GEAR SPK & WASHER STAMPED LS 5346 FLUSH



● FD NAIL & LS 5346 TAG @ PL PROD ON T/C

- × FD. Ramset Nail on T/C
 - FD. LD. & TK. on T/C
 - FD. "C" Nail on T/C
 - Set LD. & TK. on T/C
- P.K. and City Engineer tag to be set @ surface after street construction is complete. (If possible)

Scale: 1" = 30'
 Date: 08/13/15
 Drawn by: pw
 F.B.:
 TR-Sec: T2SR4W-33

OFFICIAL TIE PLAT
 CITY OF RIVERSIDE

These ties are for the purpose of perpetuating the found monumentation. No claim is made as to the relationship of the points or lines shown hereon to true boundary locations.

Sheet 1 of 1
 Cadme MB: 58-3