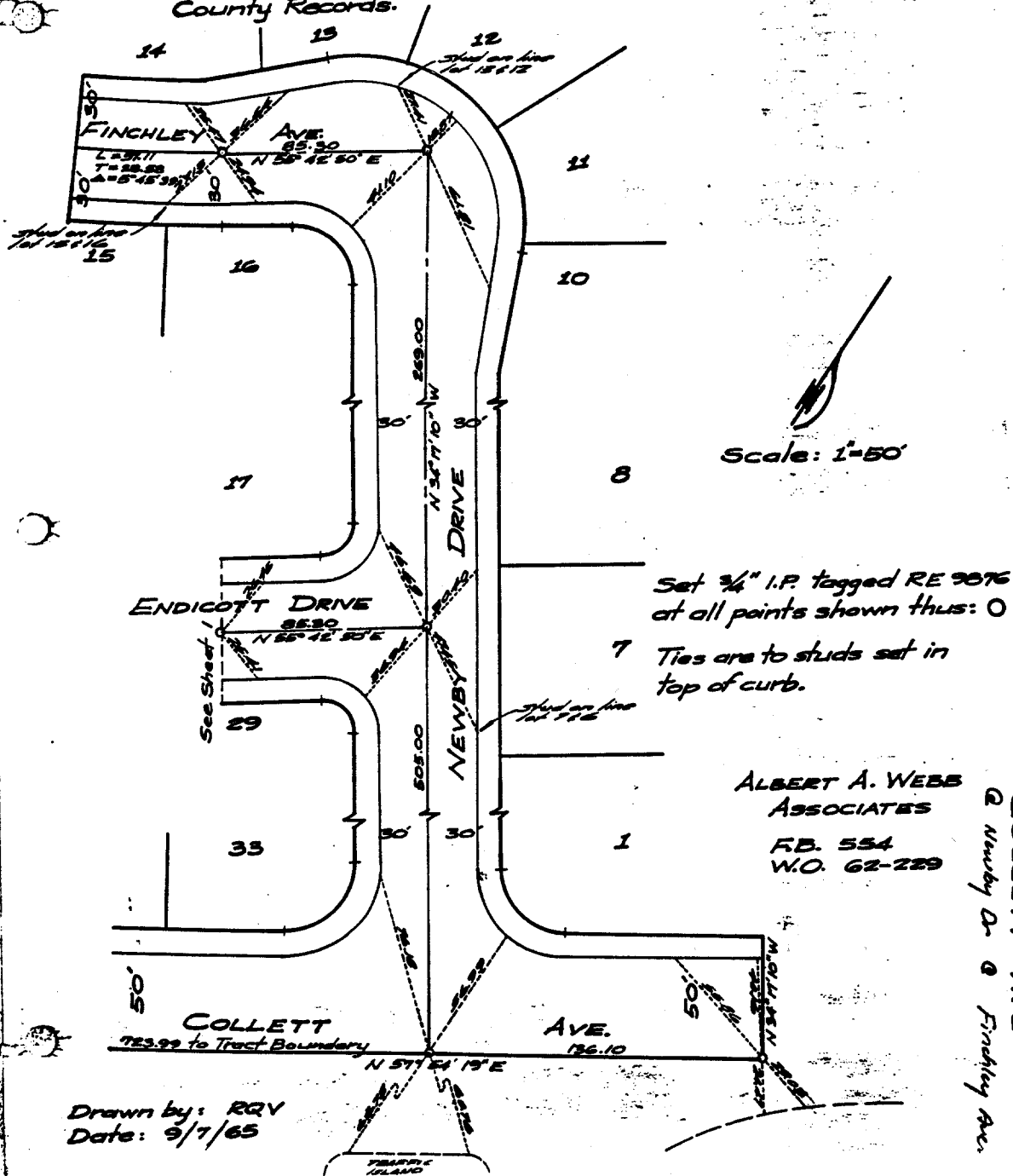


1443.714

Street: COLLETT AVE

X-Street: NEWBY DR
OFFICIAL USE ONLY**TRACT N^o 2551**

Being a subdivision of a portion of Blocks 43 & 46
and portions of Lots BC & RR of La Sierra Gardens
recorded in M.B. 11 pages 42-50, Riverside
County Records.



✕ FD. Ramset Nail on T/C
■ FD. "C" Nail on T/C

● FD. LD. & TK. on T/C
○ Set LD. & TK. on T/C

Scale:
Date:
Drawn by:
W.O.:
F.B.:

OFFICIAL TIE PLAT

CITY OF RIVERSIDE

These ties are for the purpose of perpetuating the found
monumentation. No claim is made as to the relationship of
the points or lines shown hereon to true boundary locations.

Sheet **2** of **2**
File No.: