

14431.TIF

Street:

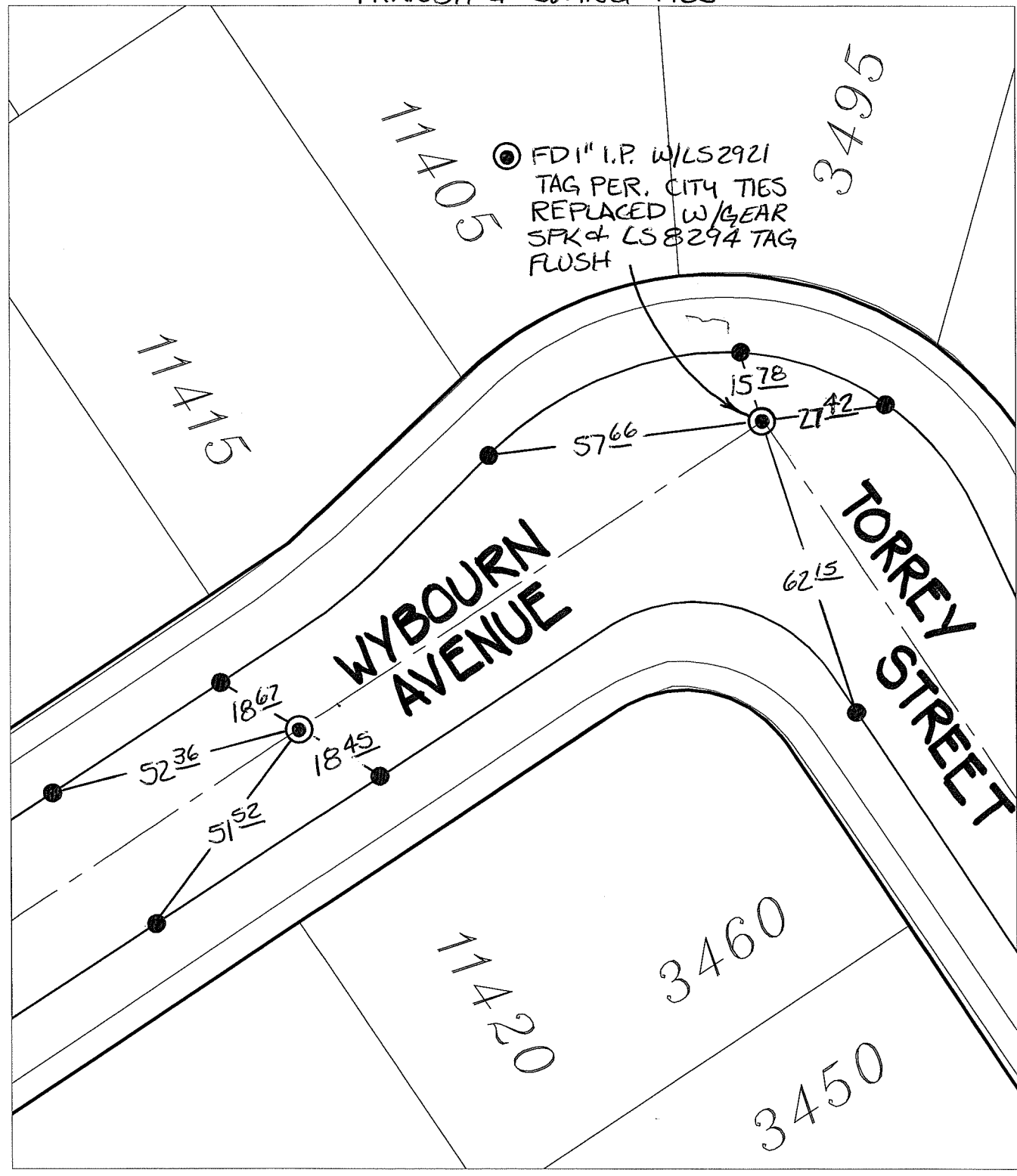
WYBOURN AVENUE

OFFICIAL USE ONLY

X-Street:

TORREY STREET


TRANSIT & SWING TIES



X FD. Ramset Nail on T/C    ● FD. LD. & TK. on T/C    P.K. and City Engineer tag to be set @ surface after street construction is complete. (If possible)  
 ■ FD. "C" Nail on T/C    ○ Set LD. & TK. on T/C

Scale: 1" = 30'  
 Date: 08/21/15  
 Drawn by: pw  
 F.B.:  
 TR-Sec: T3SR6W-23

**OFFICIAL TIE PLAT**  
**CITY OF RIVERSIDE**  
*These ties are for the purpose of perpetuating the found monumentation. No claim is made as to the relationship of the points or lines shown hereon to true boundary locations.*

  
 Sheet 1 of 1  
 Cadme MB: 79-8