

14435.TIF

Street:

CORTEZ STREET

X-Street:  
OFFICIAL USE ONLY

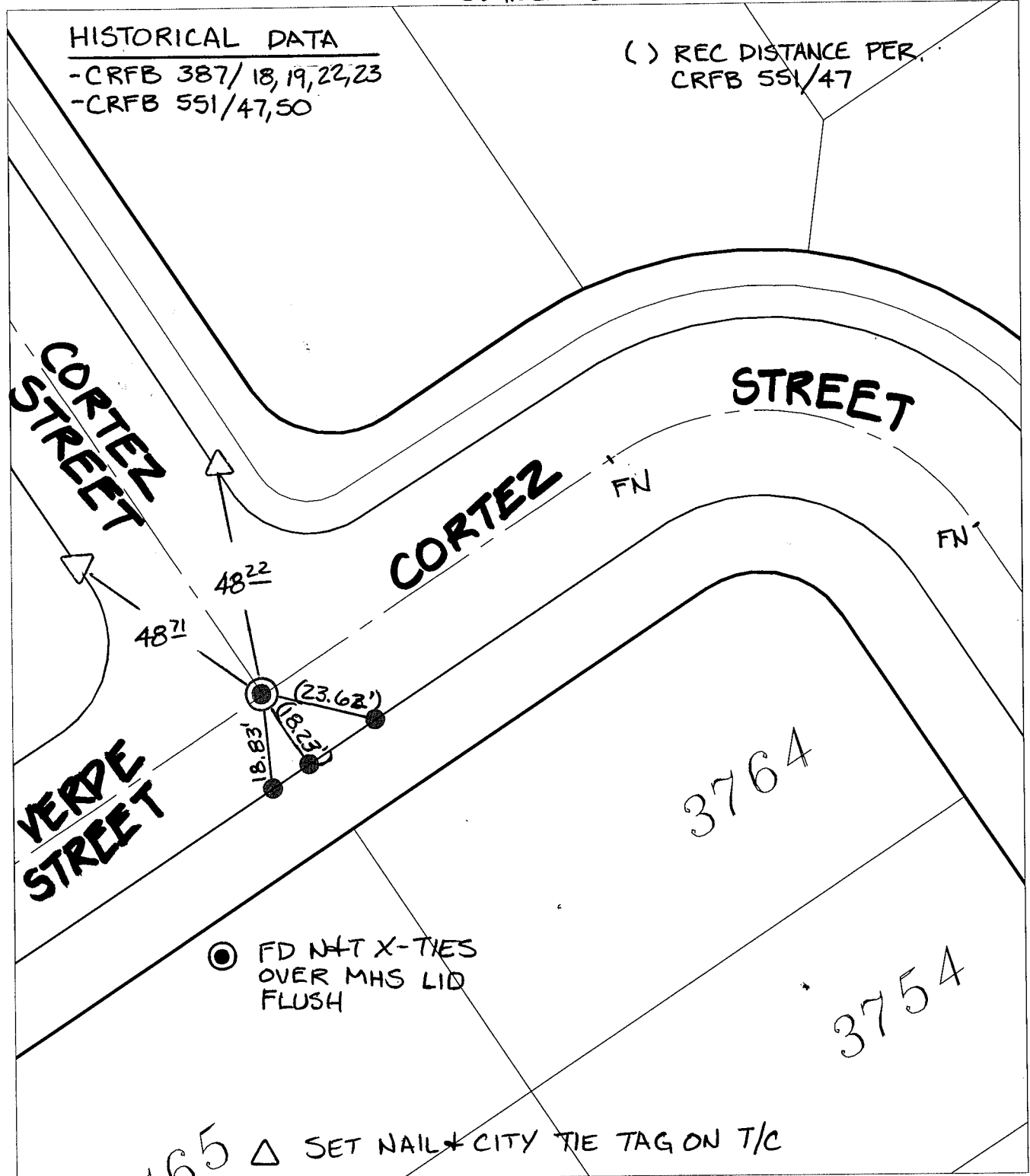
VERDE STREET

SWING TIES

HISTORICAL DATA

- CRFB 387/18,19,22,23
- CRFB 551/47,50

( ) REC DISTANCE PER.  
CRFB 551/47



- ✕ FD. Ramset Nail on T/C
- FD. LD. & TK. on T/C
- FD. "C" Nail on T/C
- Set LD. & TK. on T/C

P.K. and City Engineer tag to be set @ surface after street construction is complete. (If possible)

Scale: 1" = 30'  
 Date: 02/19/16  
 Drawn by: pw  
 F.B.:  
 TR-Sec: T3SR5W-4

**OFFICIAL TIE PLAT**  
 CITY OF RIVERSIDE

*These ties are for the purpose of perpetuating the found monumentation. No claim is made as to the relationship of the points or lines shown hereon to true boundary locations.*



Sheet 1 of 1  
 Cadme MB: 52-8