

14439.TIF

Street:

ORCHARD STREET

X-Street:

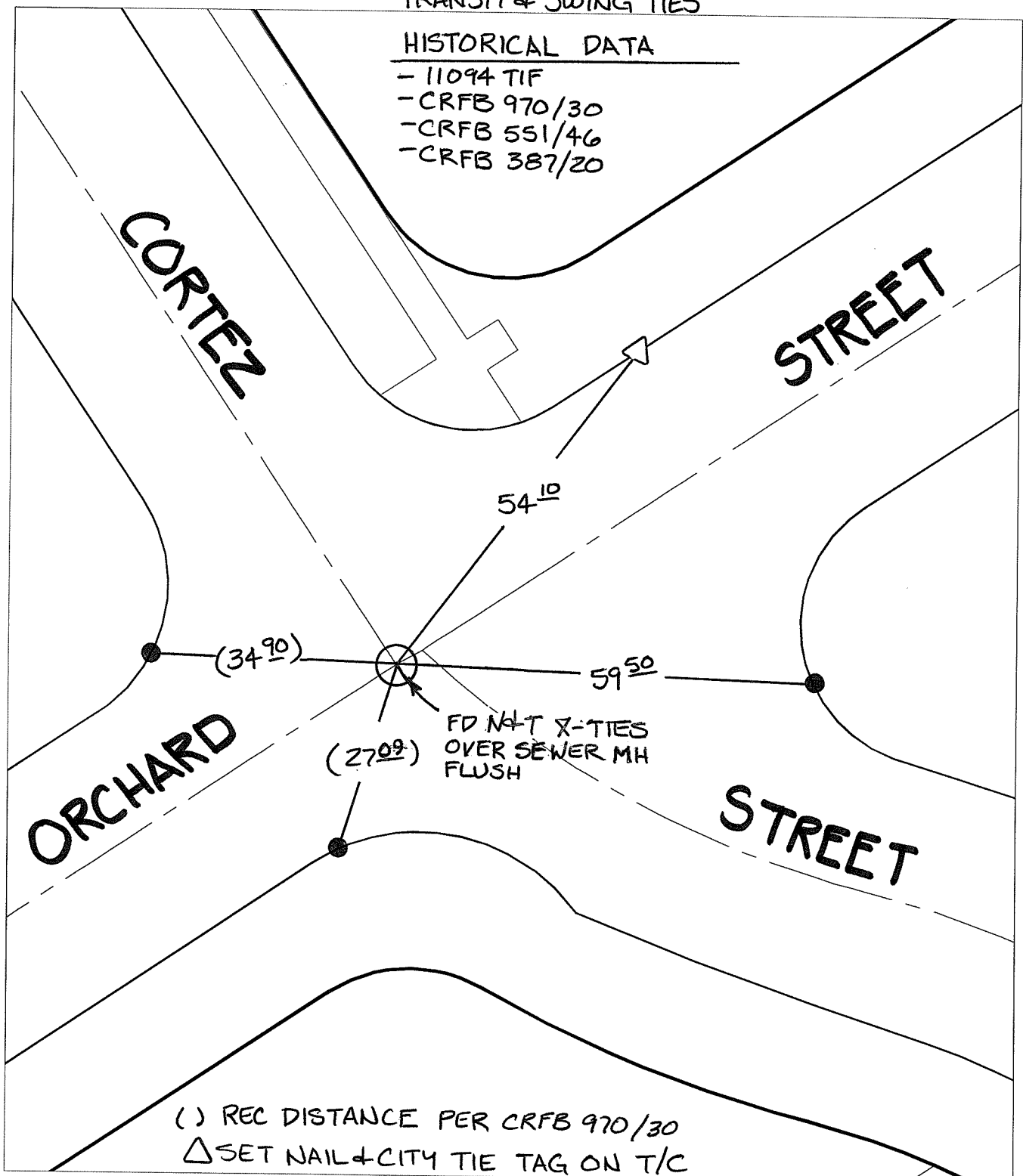
CORTEZ STREET

OFFICIAL USE ONLY

TRANSIT & SWING TIES

HISTORICAL DATA

- 11094 TIF
- CRFB 970/30
- CRFB 551/46
- CRFB 387/20



( ) REC DISTANCE PER CRFB 970/30  
 Δ SET NAIL & CITY TIE TAG ON T/C

- ✕ FD. Ramset Nail on T/C
  - FD. LD. & TK. on T/C
  - FD. "C" Nail on T/C
  - Set LD. & TK. on T/C
- P.K. and City Engineer tag to be set @ surface after street construction is complete. (If possible)

Scale: 1" = 20'  
 Date: 02/19/16  
 Drawn by: pw  
 F.B.:  
 TR-Sec: T3SR5W-4

**OFFICIAL TIE PLAT**  
**CITY OF RIVERSIDE**

*These ties are for the purpose of perpetuating the found monumentation. No claim is made as to the relationship of the points or lines shown hereon to true boundary locations.*



Sheet 1 of 1  
 Cadme MB: 53-7