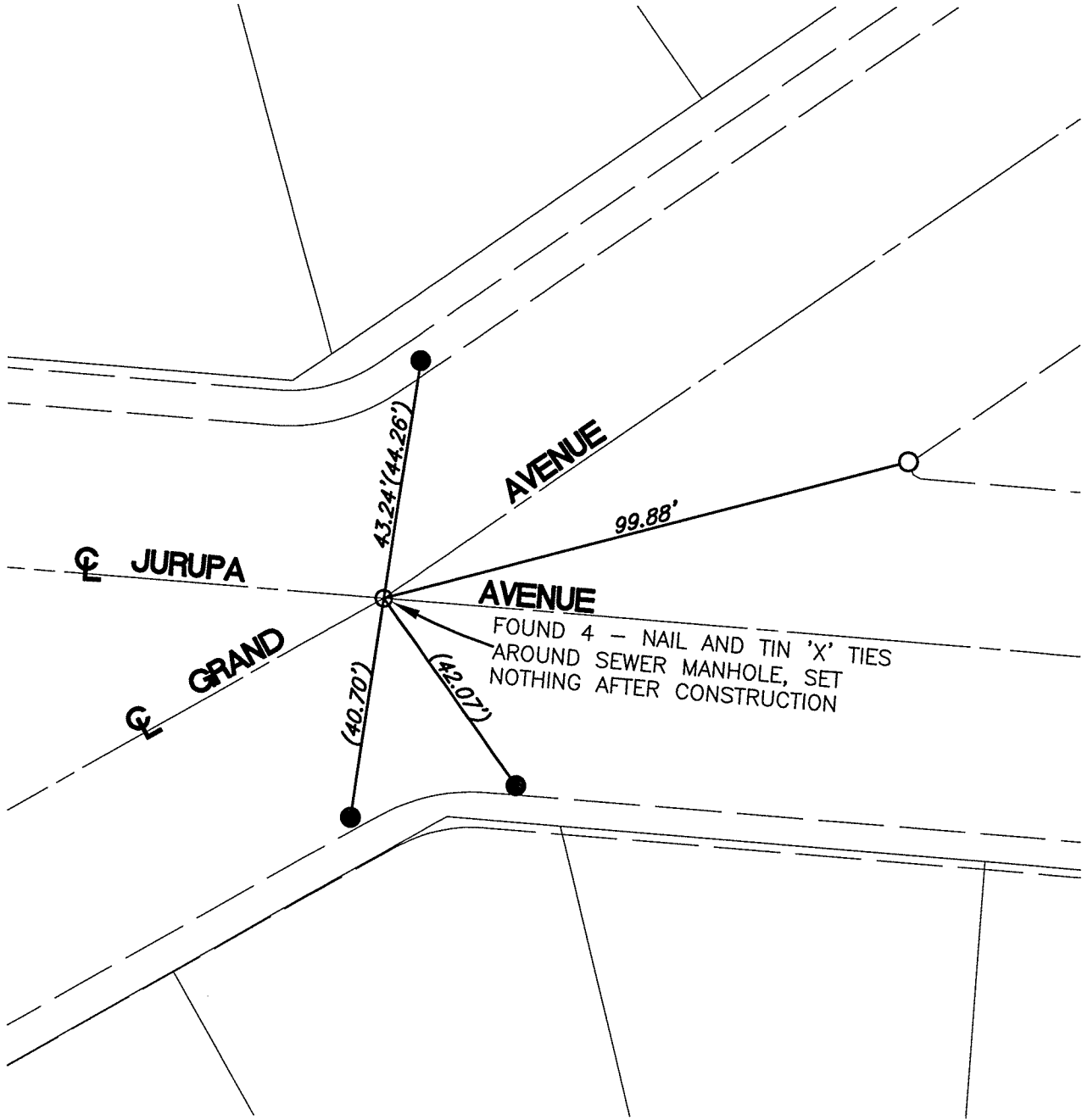


SWING TIES

HISTORICAL DATA

- (XX.XX) INDICATES RECORD DISTANCE PER 3760.TIF
- CRFB 878/31
- CRFB 550/76
- CRFB LL 35/111



- - FOUND LEAD & TACK IN T.C.
- - SET CTT NAIL IN T.C.

STREET: JURUPA AVENUE

X-STREET: OFFICIAL USE ONLY

GRAND AVENUE

14442.TIF

SCALE: 1" = 30'

DATE: MAY 16, 2016

DRAWN BY: JDF

F.B.:

SEC: 28 T.2S., R.5W

OFFICIAL TIE PLAT CITY OF RIVERSIDE

THESE TIES ARE FOR THE PURPOSE OF PERPETUATING THE FOUND MONUMENTATION. NO CLAIM IS MADE AS THE RELATIONSHIP OF THE POINTS OR LINES SHOWN HEREON TO TRUE BOUNDARY LOCATIONS



SHEET 1 OF 1