

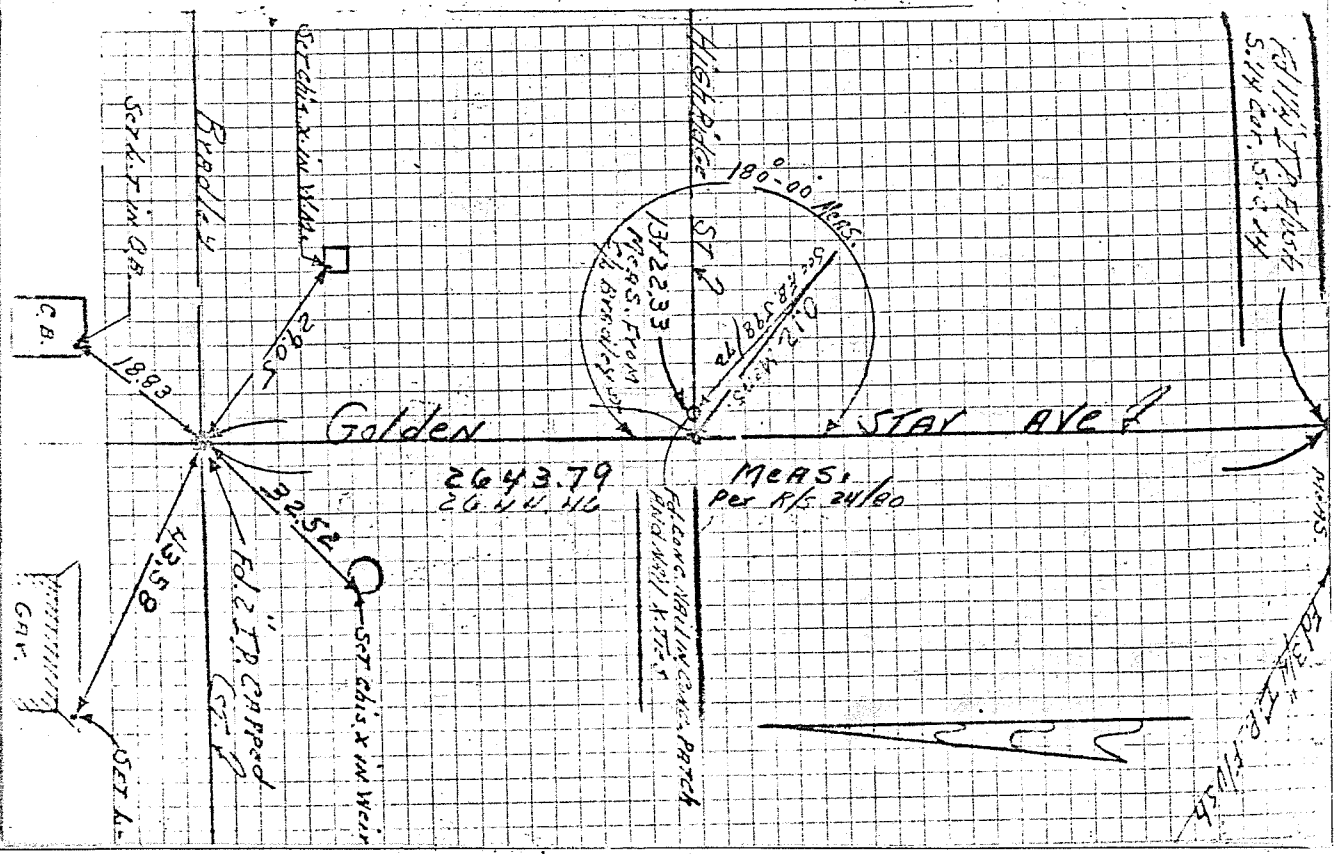
Street: GOLDEN STAR AVE.

X-Street: BRADLEY ST

OFFICIAL USE ONLY

Golden STAR AVE (S1/4)  
 Bradley ST  
 See R/S 32/16  
 See R/S 24/80

Ed 2" I.P. Capped @ Bradley ST  
 and Golden STAR AVE



- ✗ FD. Ramset Nail on T/C
- FD. LD. & TK. on T/C
- FD. "C" Nail on T/C
- Set LD. & TK. on T/C

Scale:  
 Date:  
 Drawn by:  
 W.O.:  
 F.B.:

## OFFICIAL TIE PLAT

### CITY OF RIVERSIDE

*These ties are for the purpose of perpetuating the found monumentation. No claim is made as to the relationship of the points or lines shown hereon to true boundary locations.*

Sheet 1 of 1  
 File No.: