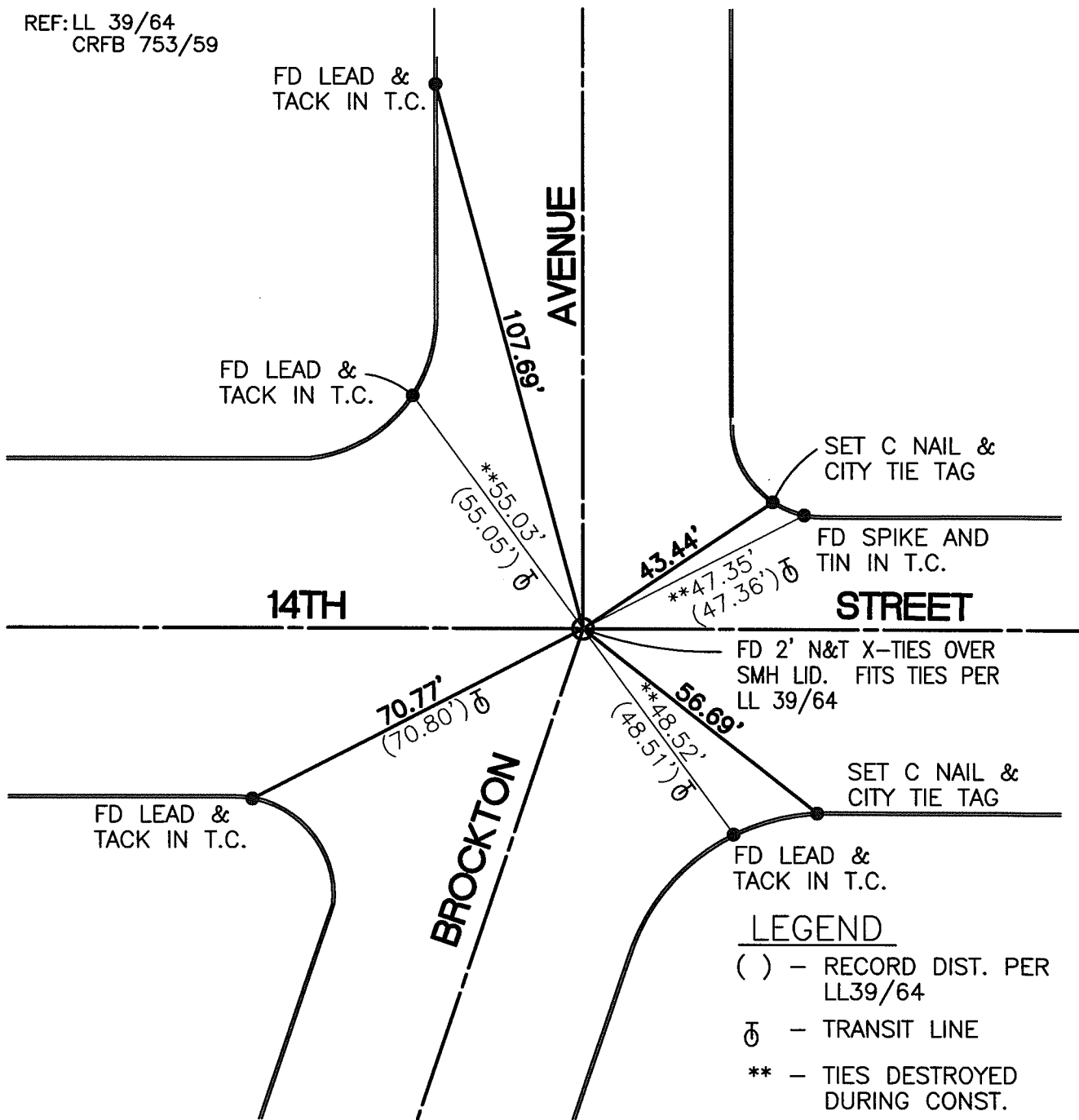


SWING TIES

REF: LL 39/64
CRFB 753/59



STREET: BROCKTON AVENUE

X-STREET: FOURTEENTH STREET

OFFICIAL USE ONLY

14463.T1F

SCALE: 1"=30'
DATE: 9/11/14
DRAWN BY: CURT
F.B.:
SEC 23, T2S., R5W

OFFICIAL TIE PLAT CITY OF RIVERSIDE

THESE TIES ARE FOR THE PURPOSE OF PERPETUATING THE FOUND MONUMENTATION. NO CLAIM IS MADE AS THE RELATIONSHIP OF THE POINTS OR LINES SHOWN HEREON TO TRUE BOUNDARY LOCATIONS

