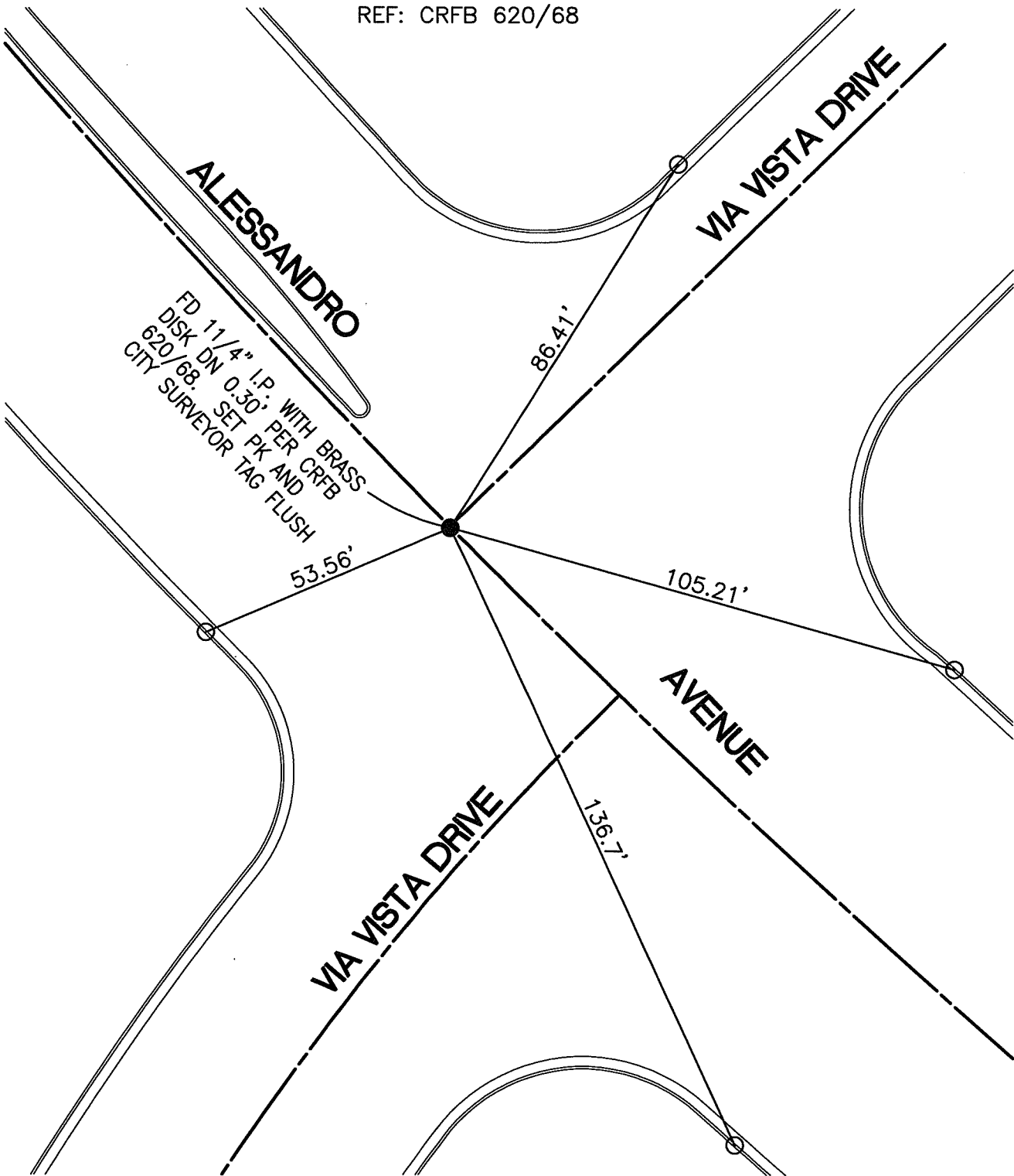


SWING TIES

REF: CRFB 620/68



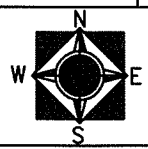
○ - SET NAIL & CITY TIE TAG IN T.C.

14527.TIF
 STREET: ALESSANDRO AVE
 X-STREET: VIA VISTA DR
 OFFICIAL USE ONLY

SCALE: 1"=30'
 DATE: 9/01/06
 DRAWN BY: CURT
 F.B.:
 SEC: 6 T.3 S.,R.4 W

OFFICIAL TIE PLAT CITY OF RIVERSIDE

THESE TIES ARE FOR THE PURPOSE OF PERPETUATING THE FOUND MONUMENTATION. NO CLAIM IS MADE AS THE RELATIONSHIP OF THE POINTS OR LINES SHOWN HEREON TO TRUE BOUNDARY LOCATIONS



SHEET 1 OF 1