

SWING TIES

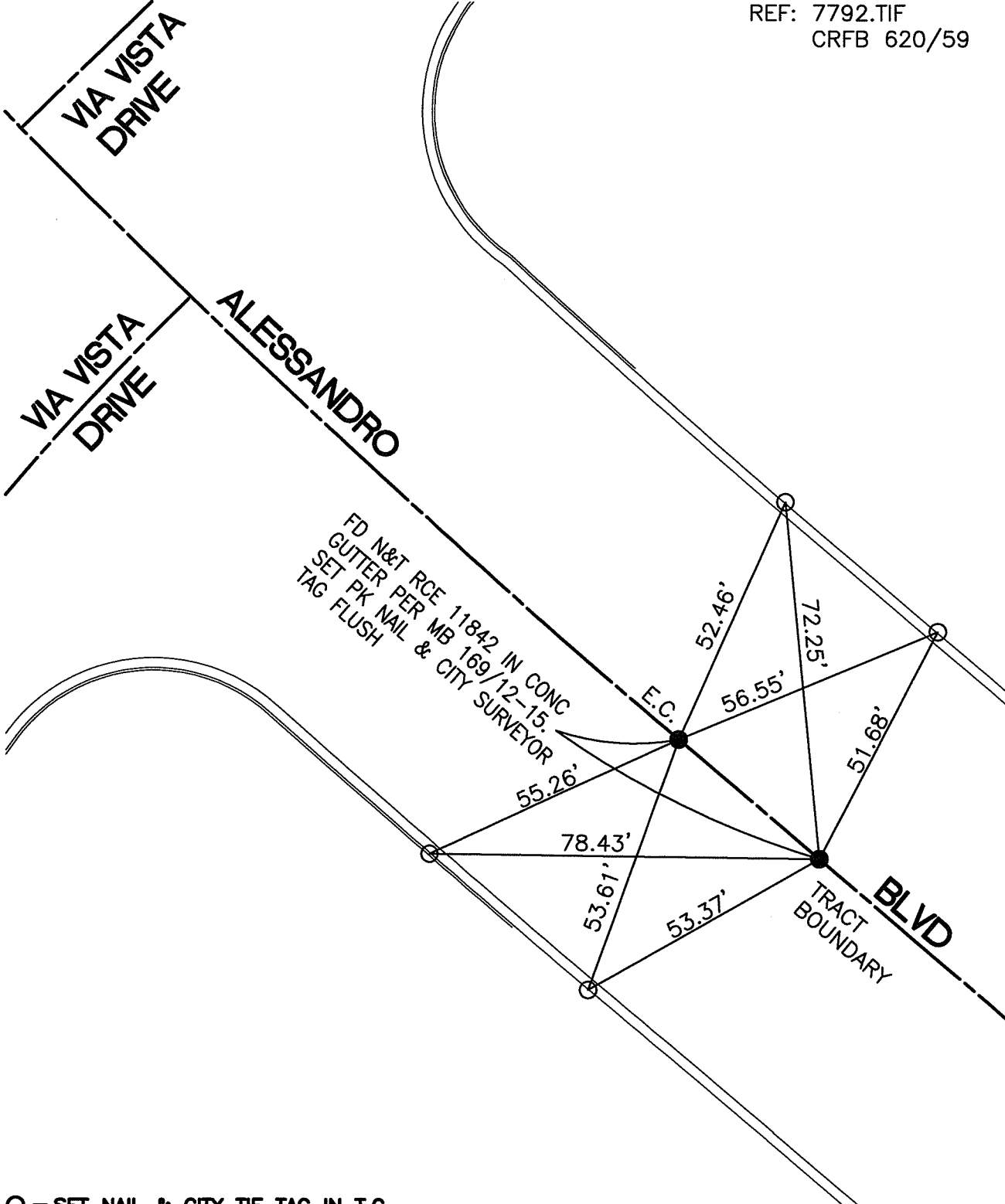
REF: 7792.TIF
CRFB 620/59

14528.TIF

STREET: ALESSANDRO AVE

OFFICIAL USE ONLY

X-STREET: 100 FT. S'LY OF VIA VISTA DR



○ - SET NAIL & CITY TIE TAG IN T.C.

SCALE: 1"=30'

DATE: 9/01/06

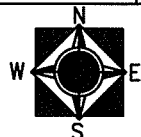
DRAWN BY: CURT

F.B.:

SEC: 6 T.3 S.,R.4 W

OFFICIAL TIE PLAT CITY OF RIVERSIDE

THESE TIES ARE FOR THE PURPOSE OF PERPETUATING THE FOUND MONUMENTATION. NO CLAIM IS MADE AS THE RELATIONSHIP OF THE POINTS OR LINES SHOWN HEREON TO TRUE BOUNDARY LOCATIONS



SHEET 1 OF 1