

14544.TIF

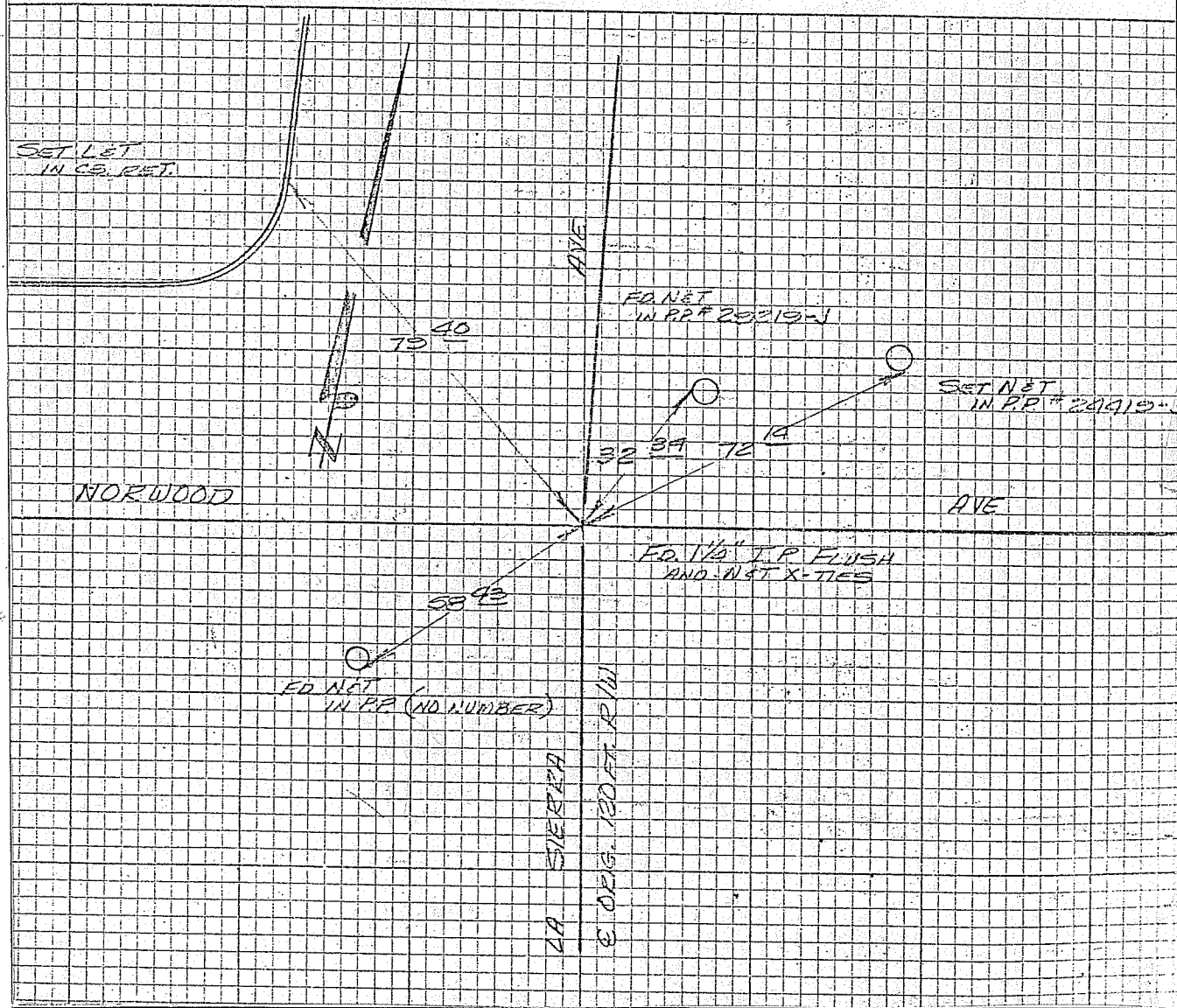
Street: NORWOOD AVE.

X-Street: LA SIERRA AVE.

OFFICIAL USE ONLY

MARCH 31, 1972
F.B. 900/69

CRFB 940/69 3-31-72



- ✕ FD. Ramset Nail on T/C
- FD. LD. & TK. on T/C
- FD. "C" Nail on T/C
- Set LD. & TK. on T/C

OFFICIAL TIE PLAT

CITY OF RIVERSIDE

These ties are for the purpose of perpetuating the found monumentation. No claim is made as to the relationship of the points or lines shown hereon to true boundary locations.

Scale:
Date:
Drawn by:
W.O.:
F.B.:

Sheet 1 of 1
File No.: