

14549 TIE

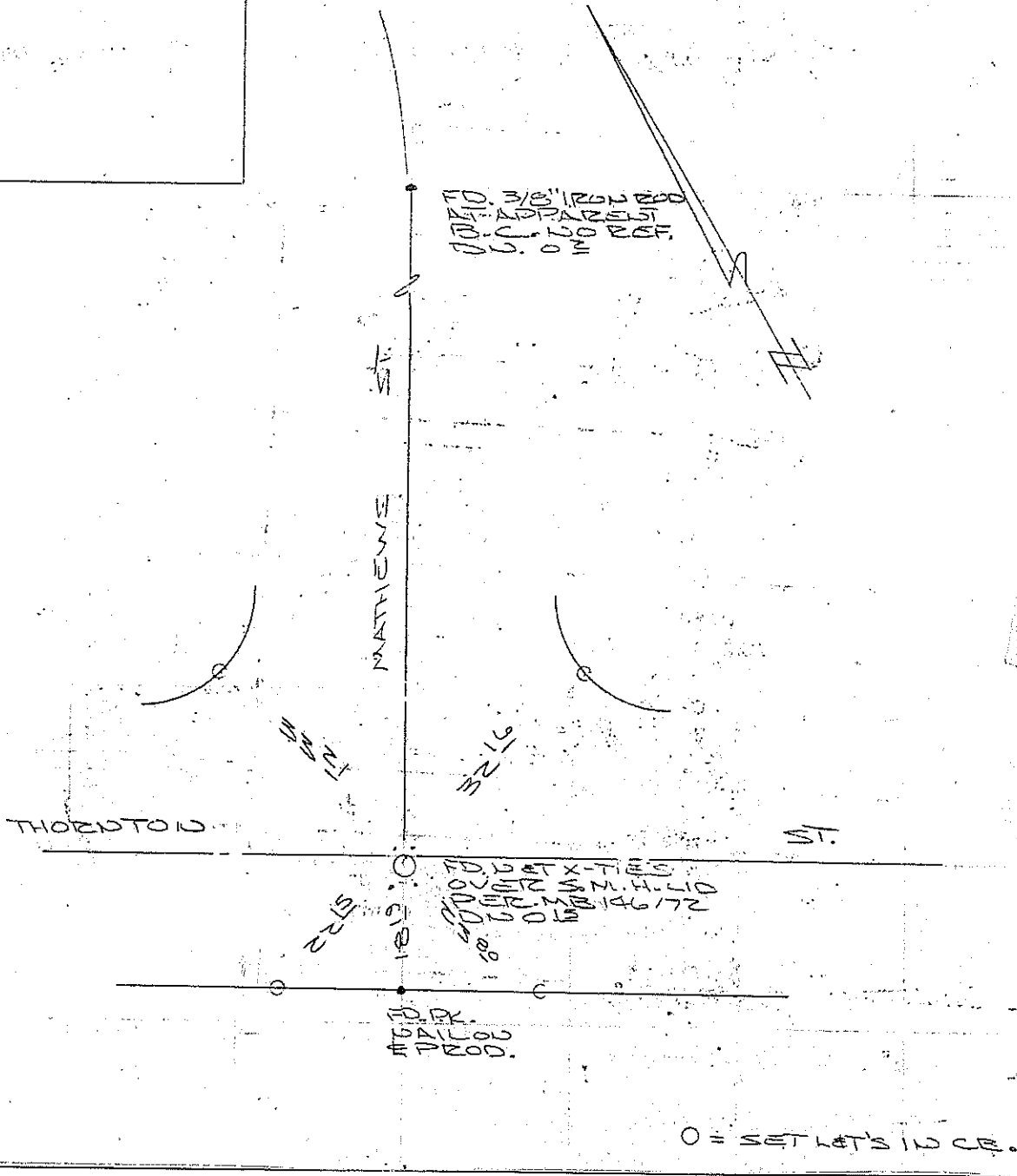
Street: THORNTON ST.

OFFICIAL USE ONLY

X-Street: MATHEWS ST.

HISTORICAL DATA
 MB 146/72

TRANSIT TIES



- ✕ FD. Ramset Nail on T/C
- FD. LD. & TK. on T/C
- FD. "C" Nail on T/C
- Set LD. & TK. on T/C

OFFICIAL TIE PLAT
CITY OF RIVERSIDE

These ties are for the purpose of perpetuating the found monumentation. No claim is made as to the relationship of the points or lines shown hereon to true boundary locations.

Scale:
 Date:
 Drawn by:
 W.O.:
 F.B.:

Sheet 1 of 1
 File No.: