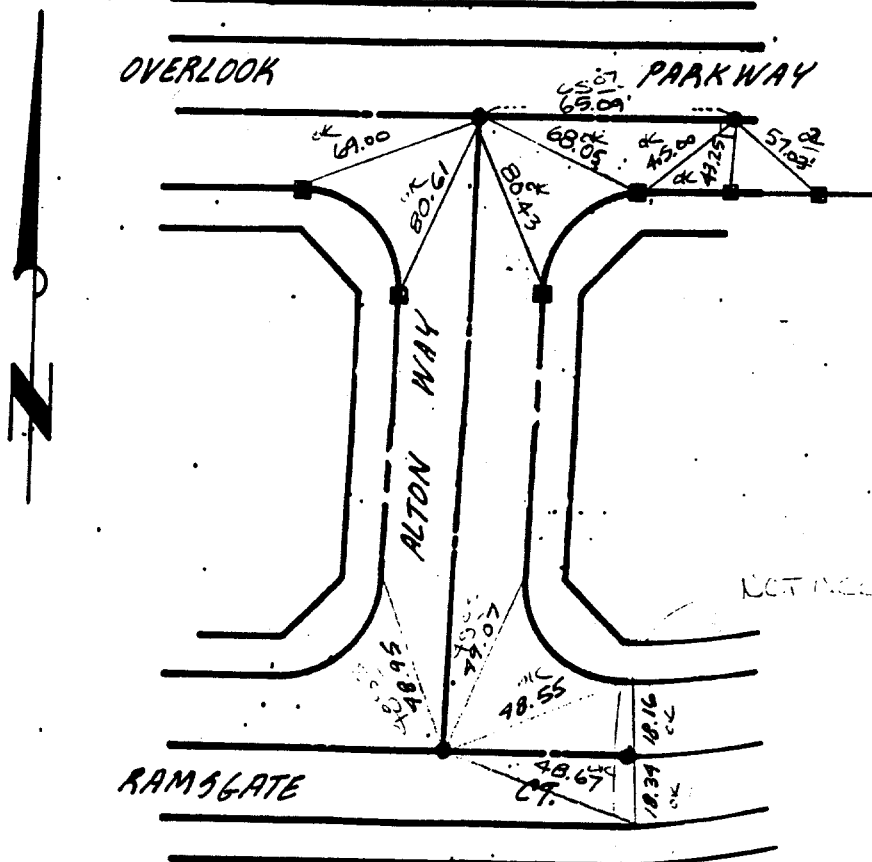


STREET ALTON WAY

X-STREET RAMSGATE
OFFICE USE ONLY

146.71F

TIES TR. 21010-1



NOT NECESSARY

ALTON WAY
OVERLOOK
RAMSGATE

- DENOTES SET 1" IP FLUSH RCE 21740
- DENOTES SET LEAD & TACK

- × FD. Ramset Nail on T/C
- FD. LD. & TK. on T/C
- FD. "C" Nail on T/C
- SET LD. & TK. On T/C

OFFICIAL TIE PLAT
CITY OF RIVERSIDE

These ties are for the purpose of perpetuating the found monumentation. No claim is made as to the relationship of the points or lines shown hereon to true boundary locations.

SHEET

OF SHEETS

FILE NO.:

SCALE:
DATE:
DR. BY:
W.O.:
F.B.: