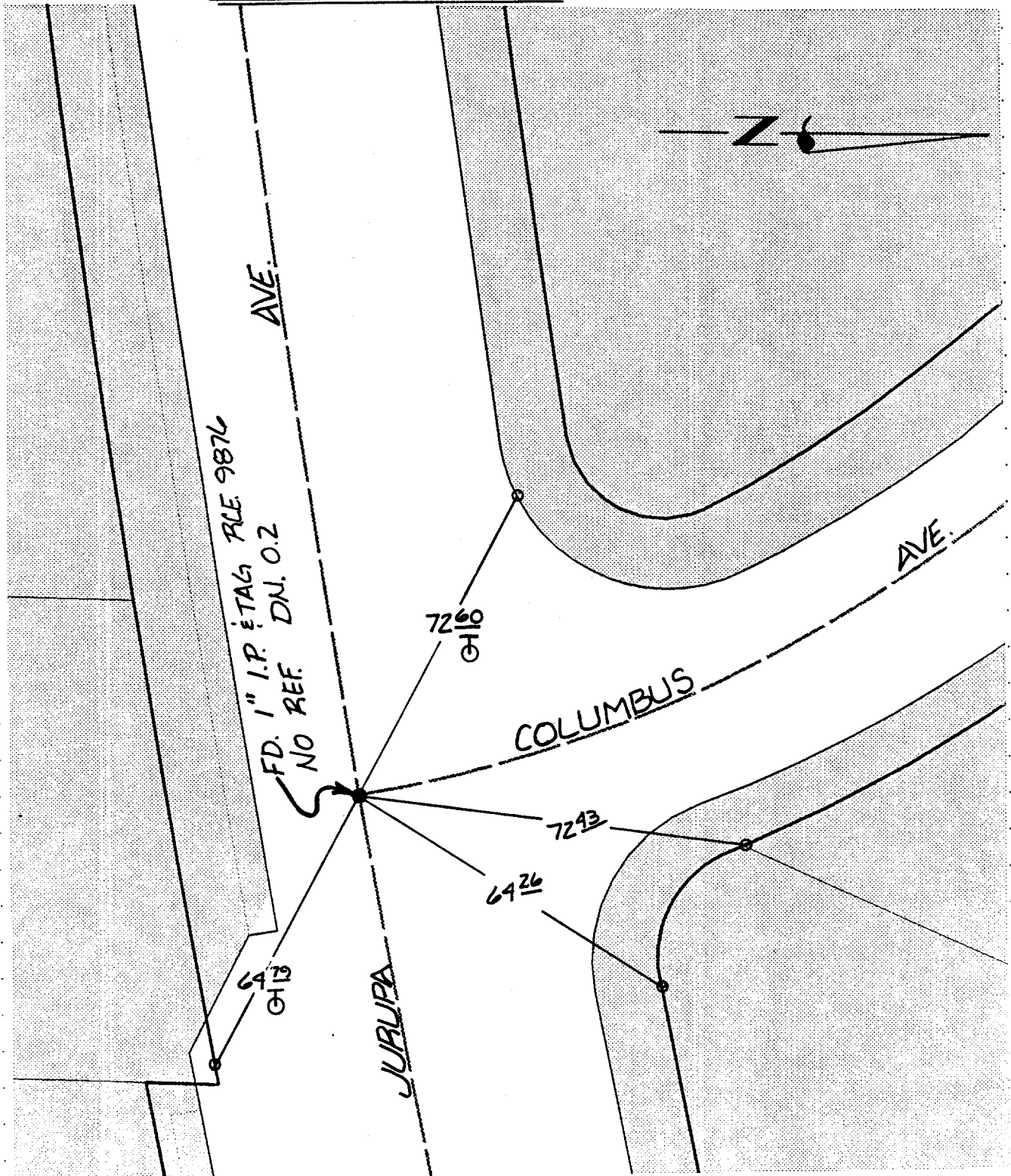


1461.TIF

TRANSIT & SWING TIES

STREET JURUPA AVE. X-STREET COLUMBUS AVE.
OFFICE USE ONLY



- ✕ FD. Ramset Nail on T/C
- FD. "C" Nail on T/C
- FD. LD. & TK. on T/C
- SET LD. & TK. On T/C

SCALE: N.T.S.
 DATE: OCT. 30, 96
 DR. BY: FINNEY, J
 W.O.:
 F.B.:

OFFICIAL TIE PLAT
 CITY OF RIVERSIDE

These ties are for the purpose of perpetuating the found monumentation. No claim is made as to the relationship of the points or lines shown hereon to true boundary locations.

SHEET
1
 OF 1 SHEETS
 FILE NO.: