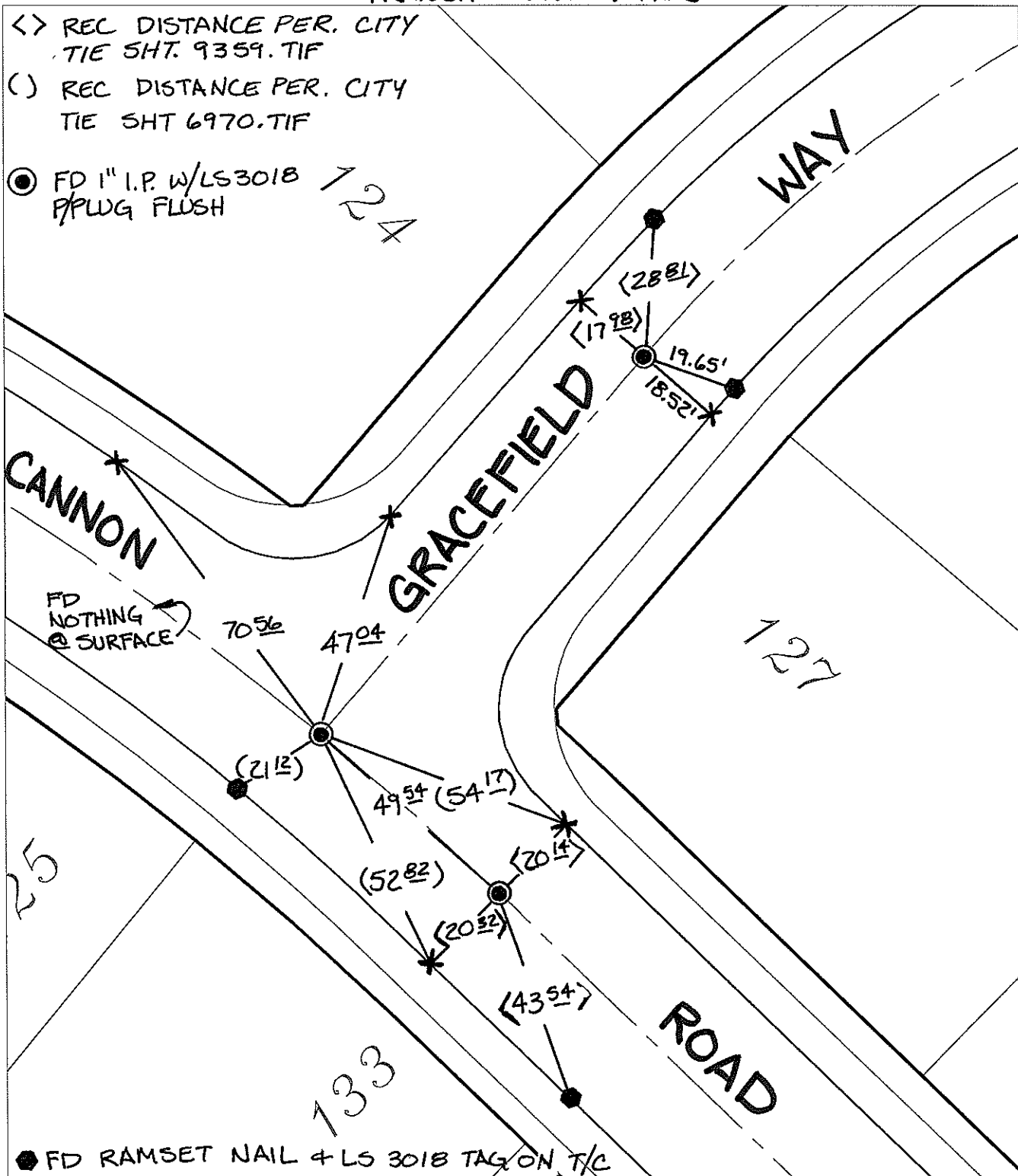


TRANSIT & SWING TIES

<> REC DISTANCE PER. CITY TIE SHT. 9359.TIF

() REC DISTANCE PER. CITY TIE SHT 6970.TIF

⊙ FD 1" I.P. W/LS3018 P/PLUG FLUSH



● FD RAMSET NAIL + LS 3018 TAG ON T/C

- × FD. Ramset Nail on T/C
- FD. LD. & TK. on T/C
- FD. "C" Nail on T/C
- Set LD. & TK. on T/C

P.K. and City Engineer tag to be set @ surface after street construction is complete. (If possible)

Street: 14618.TIF

CANNON ROAD

X-Street: OFFICIAL USE ONLY

GRACEFIELD WAY

Scale: 1" = 30'
 Date: 12/28/16
 Drawn by: pw
 F.B.:
 TR-Sec: T3SR4W-8

OFFICIAL TIE PLAT
CITY OF RIVERSIDE

These ties are for the purpose of perpetuating the found monumentation. No claim is made as to the relationship of the points or lines shown hereon to true boundary locations.



Sheet 1 of 1
 Cadme MB: 72-5