

14624.TIF

Street:

CLEARWOOD AVENUE

X-Street: LAURELBROOK DRIVE  
OFFICIAL USE ONLY

TRANSIT + SWING TIES

LAURELBROOK DRIVE

CLEARWOOD AVENUE

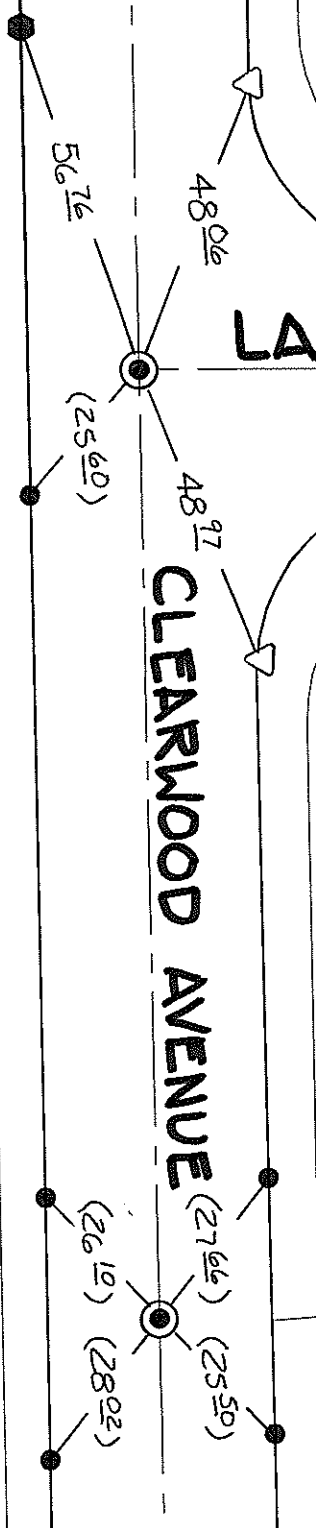
241

6862

249

● FD 1" I.P. W/LS4131 TAG  
FLUSH

( ) REC. DISTANCE PER.  
CITY TIE SHT 4622.TIF  
● FD LS4131 TAG ON T/C  
@ # PROD.



- × FD. Ramset Nail on T/C
- FD. LD. & TK. on T/C
- FD. "C" Nail on T/C
- Set LD. & TK. on T/C

P.K. and City Engineer tag to be set @ surface after street construction is complete. (If possible)

Scale: 1" = 30'

Date: 12/15/16

Drawn by: pw

F.B.:

TR-Sec: T3SR4W-8

# OFFICIAL TIE PLAT

CITY OF RIVERSIDE

*These ties are for the purpose of perpetuating the found monumentation. No claim is made as to the relationship of the points or lines shown hereon to true boundary locations.*



Sheet 1 of 1

Cadme MB: 72-3