

14627.TIF

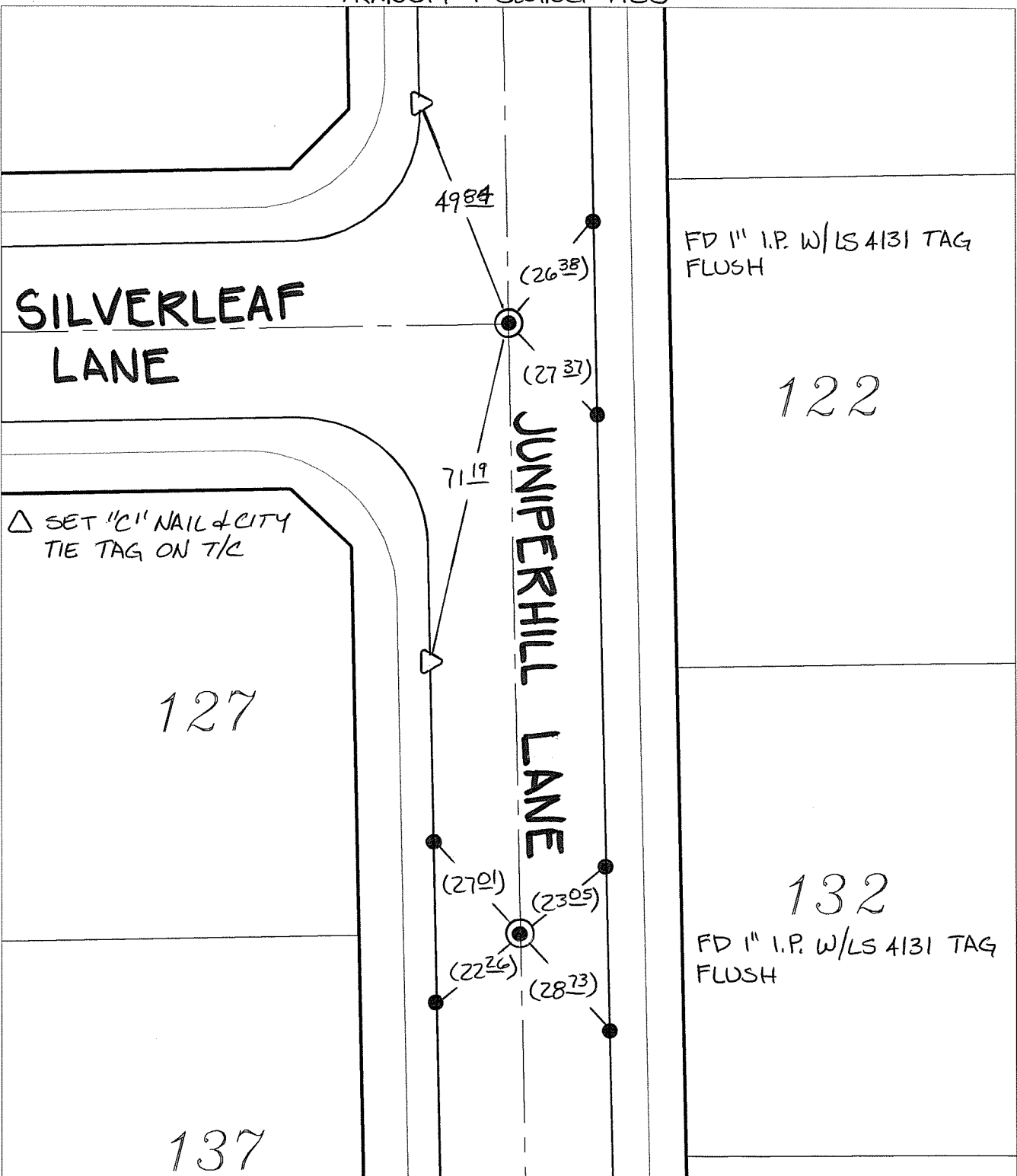
Street:

SILVERLEAF LANE

X-Street:
OFFICIAL USE ONLY

JUNIPERHILL LANE

TRANSIT & SWING TIES



FD 1" I.P. W/LS 4131 TAG FLUSH

122

Δ SET 'C' NAIL & CITY TIE TAG ON T/C

127

JUNIPERHILL LANE

132

FD 1" I.P. W/LS 4131 TAG FLUSH

137

- × FD. Ramset Nail on T/C
- FD. LD. & TK. on T/C
- FD. "C" Nail on T/C
- Set LD. & TK. on T/C

P.K. and City Engineer tag to be set @ surface after street construction is complete. (If possible)

Scale: 1" = 30'
 Date: 05/15/17
 Drawn by: pw
 F.B.:
 TR-Sec: T3SR4W-8

OFFICIAL TIE PLAT
CITY OF RIVERSIDE

These ties are for the purpose of perpetuating the found monumentation. No claim is made as to the relationship of the points or lines shown hereon to true boundary locations.

Sheet 1 of 1
 Cadme MB: 72-3