

14636.TIF

Street:

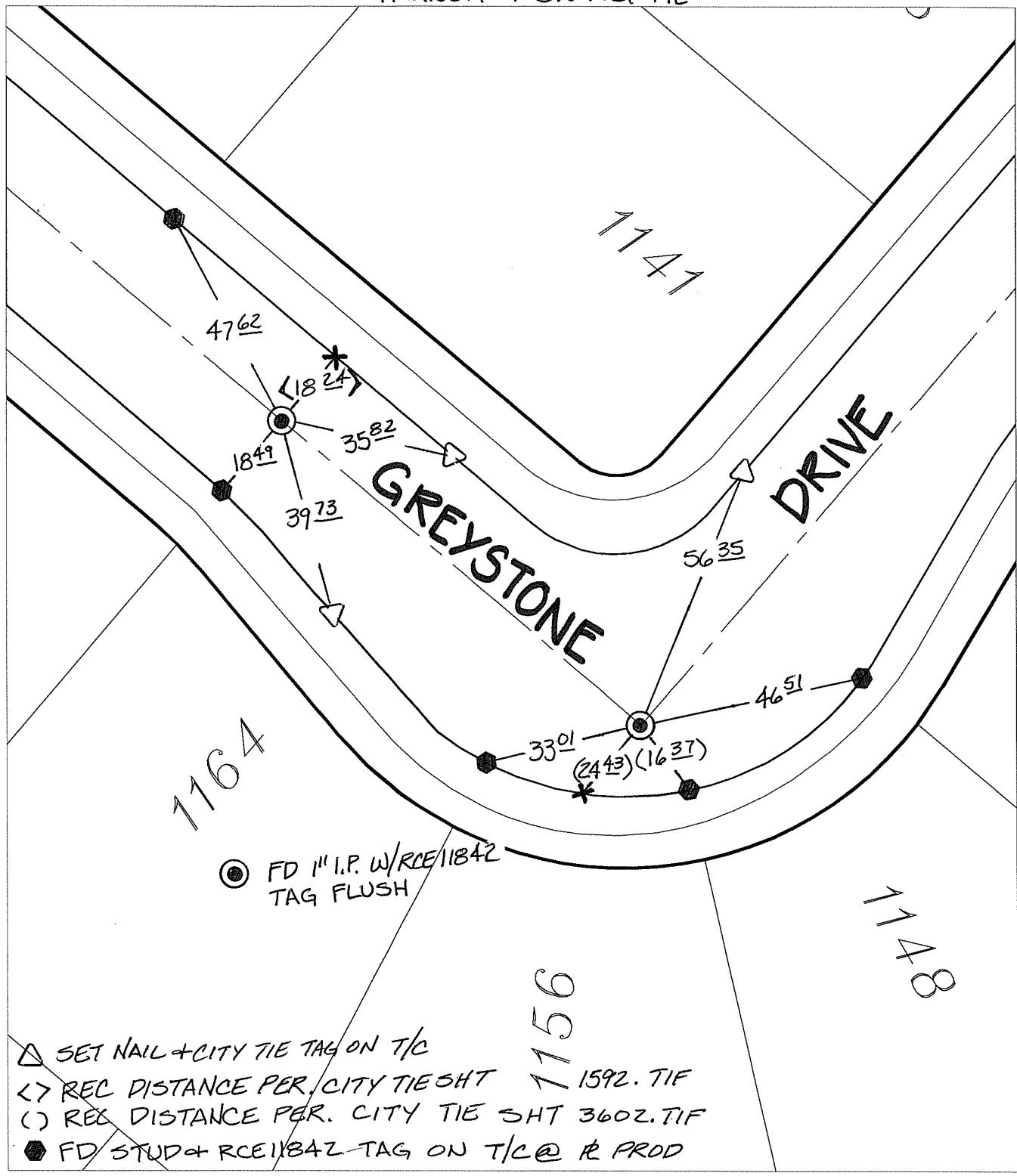
GREYSTONE DRIVE

OFFICIAL USE ONLY

X-Street:

KNUCKLE

TRANSIT & SWING TIE




- △ SET NAIL + CITY TIE TAG ON T/C
- <7> REC DISTANCE PER. CITY TIE SHT 1592. TIF
- () REC DISTANCE PER. CITY TIE SHT 3602. TIF
- FD STUD + RCE 11842 TAG ON T/C @ R PROD

- × FD. Ramset Nail on T/C
- FD. LD. & TK. on T/C
- FD. "C" Nail on T/C
- Set LD. & TK. on T/C
- P.K. and City Engineer tag to be set @ surface after street construction is complete. (If possible)

Scale: 1" = 30'
 Date: 12/17/16
 Drawn by: pw
 F.B.:
 TR-Sec: T3SR4W-7

OFFICIAL TIE PLAT
CITY OF RIVERSIDE

These ties are for the purpose of perpetuating the found monumentation. No claim is made as to the relationship of the points or lines shown hereon to true boundary locations.



Sheet 1 of 1
 Cadme MB: 71-4