

14641.TIF

Street:

CLEARWOOD AVENUE

X-Street:

RIDGE TOP DRIVE

OFFICIAL USE ONLY

SWING TIES

● FD 1" I.P. W/LS 5306 P/PLUG FLUSH

■ FD 1" I.P. W/RCE 31574 TAG FLUSH

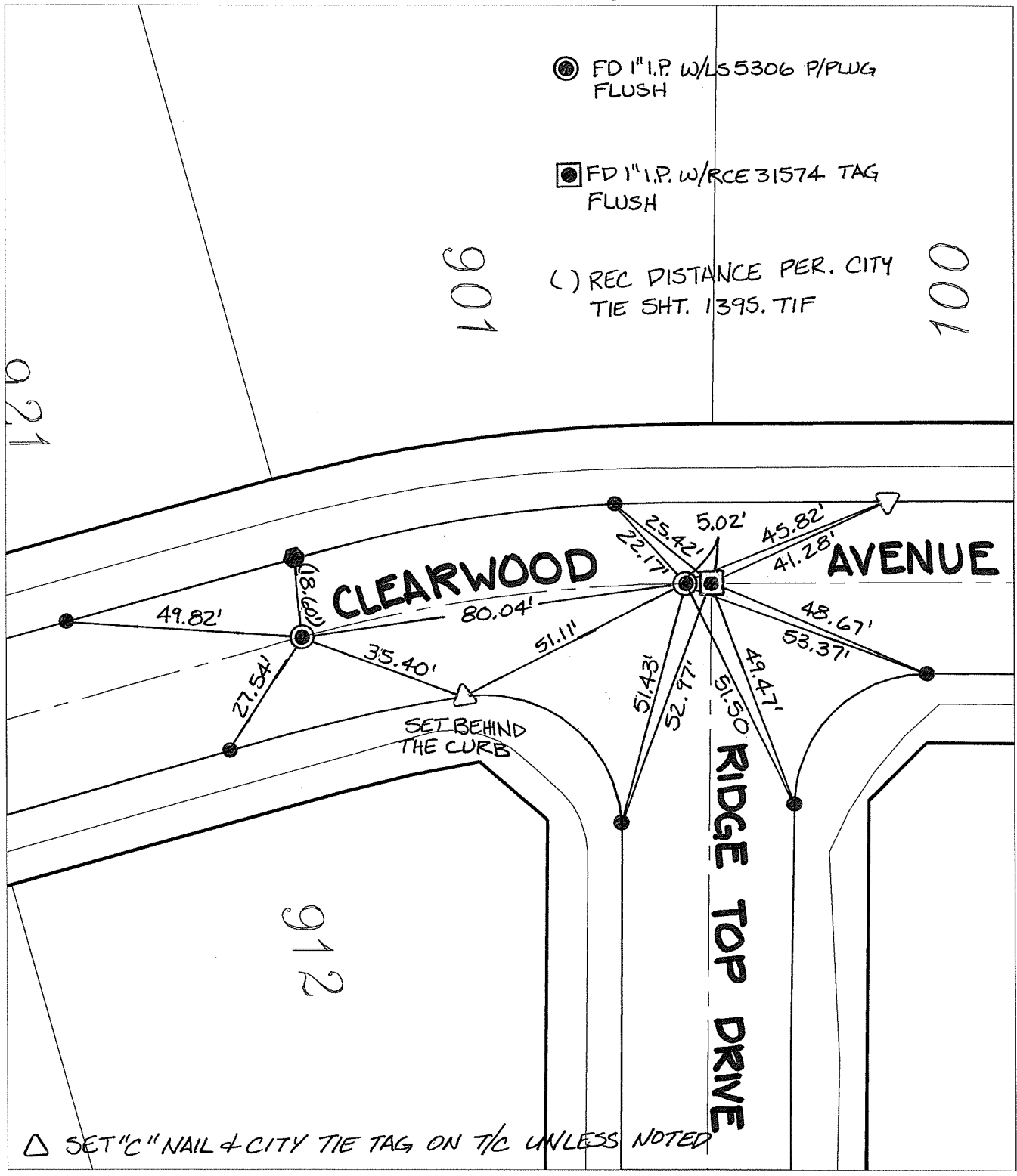
() REC DISTANCE PER. CITY TIE SHT. 1395. TIF

901

100

921

912



△ SET "C" NAIL & CITY TIE TAG ON T/C UNLESS NOTED

- ✕ FD. Ramset Nail on T/C
- FD. LD. & TK. on T/C
- FD. "C" Nail on T/C
- Set LD. & TK. on T/C

P.K. and City Engineer tag to be set @ surface after street construction is complete. (If possible)

Scale: 1" = 30'

Date: 12/15/16

Drawn by: pw

F.B.:

TR-Sec: T3SR4W-7

OFFICIAL TIE PLAT
CITY OF RIVERSIDE

These ties are for the purpose of perpetuating the found monumentation. No claim is made as to the relationship of the points or lines shown hereon to true boundary locations.

Sheet 1 of 1

Cadme MB: 71-4