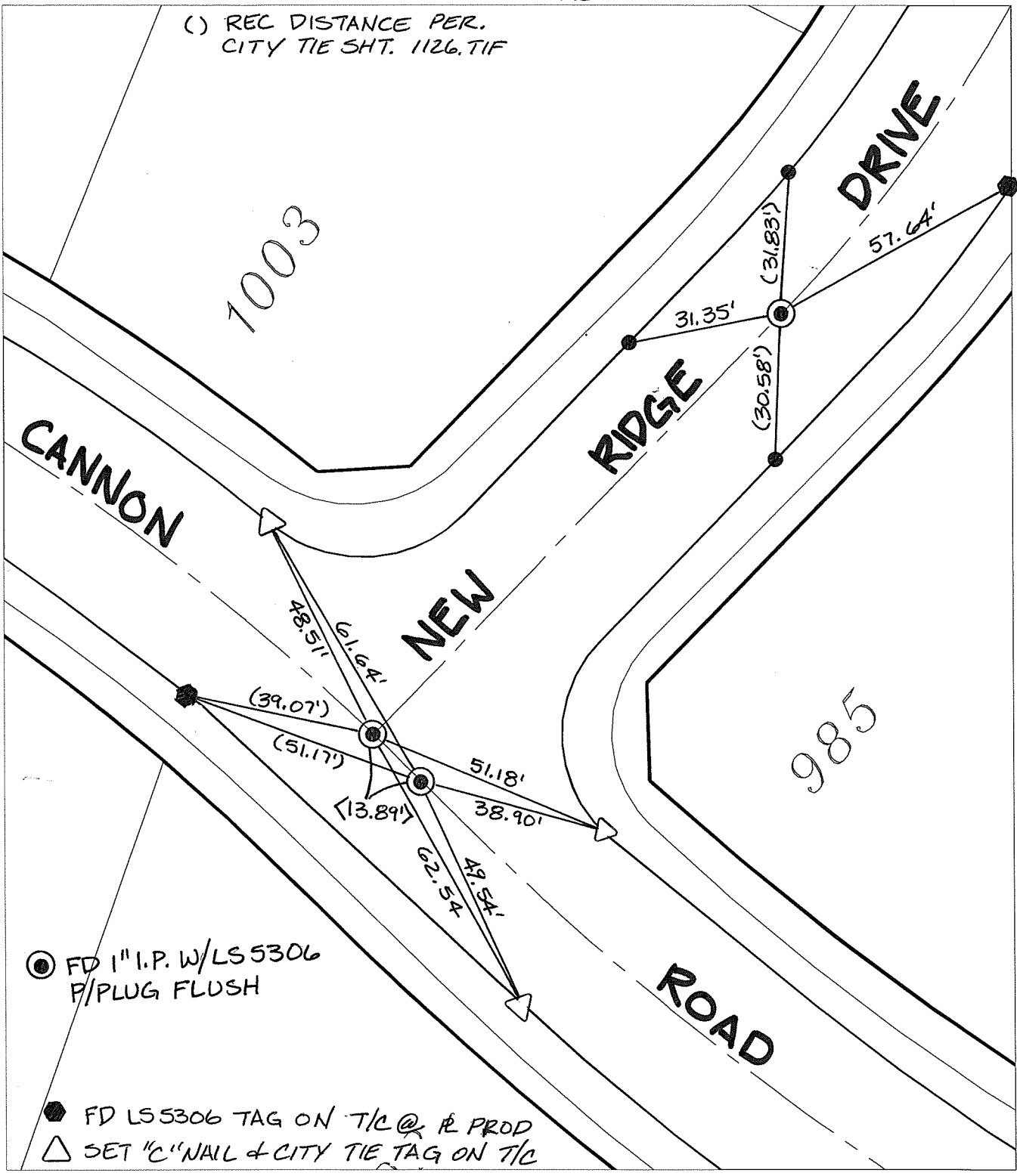


14644.TIF

Street: NEW RIDGE DRIVE
X-Street: CANNON ROAD
OFFICIAL USE ONLY

SWING TIES

() REC DISTANCE PER.
CITY TIE SHT. 1126.TIF



● FD 1" I.P. W/LS 5306
P/PLUG FLUSH

● FD LS 5306 TAG ON T/C @ R PROD
△ SET "C" NAIL & CITY TIE TAG ON T/C

- × FD. Ramset Nail on T/C
- FD. LD. & TK. on T/C
- FD. "C" Nail on T/C
- Set LD. & TK. on T/C

P.K. and City Engineer tag to be set @
surface after street construction is
complete. (If possible)

Scale: 1" = 30'
 Date: 11/15/16
 Drawn by: pw
 F.B.:
 TR-Sec: T3SR4W-7

OFFICIAL TIE PLAT
CITY OF RIVERSIDE

*These ties are for the purpose of perpetuating the found
 monumentation. No claim is made as to the relationship of
 the points or lines shown hereon to true boundary locations.*

Sheet 1 of 1
 Cadme MB: 71-6