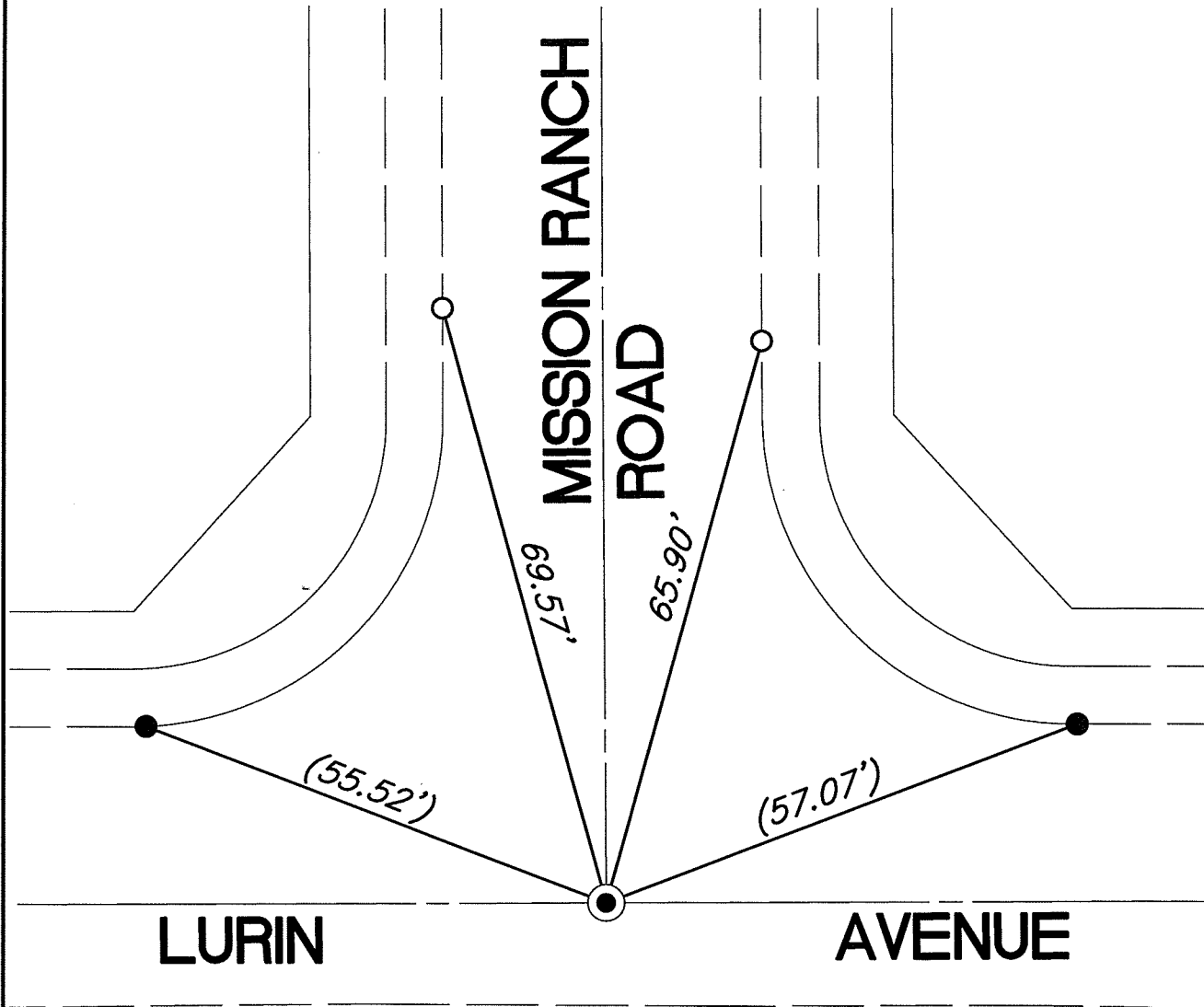


SWING TIES

HISTORICAL DATA

(XX.XX) INDICATES RECORD DISTANCE PER 13057.TIF



14647.TIF
 STREET: LURIN AVENUE
 OFFICIAL USE ONLY
 X-STREET: MISSION RANCH ROAD

- — FOUND LEAD AND TACK IN T.C.
- — SET CTT IN T.C.
- ⊙ — FOUND SPIKE AND WASHER STAMPED "PLS 5491" PER 13057.TIF

SCALE:	1"=20'
DATE:	APRIL 24, 2017
DRAWN BY:	JDF
F.B.:	
SEC:	29 T.3S., R.4W

OFFICIAL TIE PLAT CITY OF RIVERSIDE

THESE TIES ARE FOR THE PURPOSE OF PERPETUATING THE FOUND MONUMENTATION. NO CLAIM IS MADE AS THE RELATIONSHIP OF THE POINTS OR LINES SHOWN HEREON TO TRUE BOUNDARY LOCATIONS

