

14651.TIF

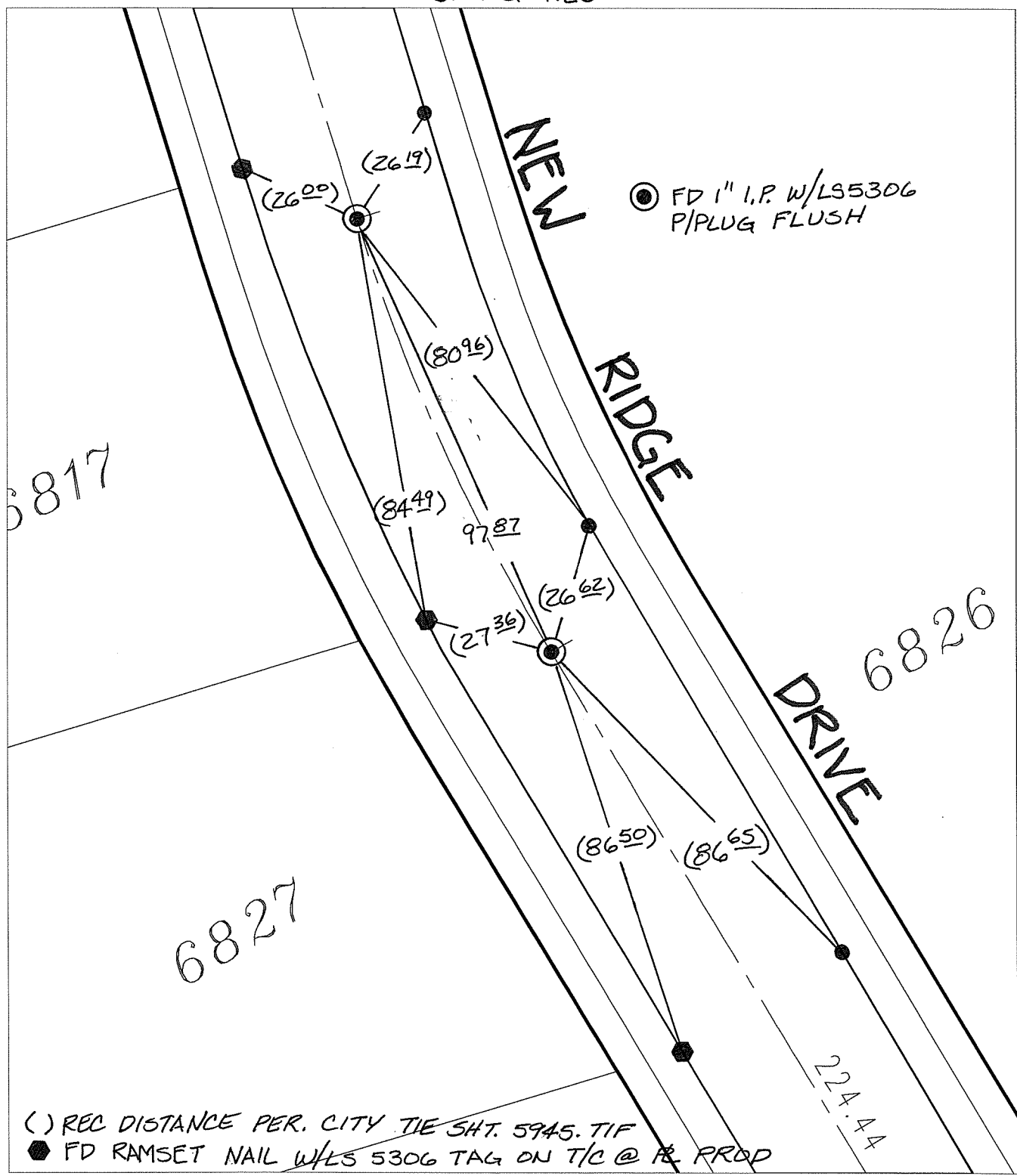
Street:

NEW RIDGE DRIVE

OFFICIAL USE ONLY

X-Street: BC & EC N OF BASILONE

SWING TIES



○ FD 1" I.P. W/LS5306 P/PLUG FLUSH

6817

6827

DRIVE 6826

224.44

() REC DISTANCE PER. CITY TIE SH. 5945. TIF
 ● FD RAMSET NAIL W/LS 5306 TAG ON T/C @ R. PROP

- × FD. Ramset Nail on T/C
 - FD. LD. & TK. on T/C
 - FD. "C" Nail on T/C
 - Set LD. & TK. on T/C
- P.K. and City Engineer tag to be set @ surface after street construction is complete. (If possible)

Scale: 1" = 30'
 Date: 12/04/16
 Drawn by: pw
 F.B.:
 TR-Sec: T3SR4W-7

OFFICIAL TIE PLAT
CITY OF RIVERSIDE

These ties are for the purpose of perpetuating the found monumentation. No claim is made as to the relationship of the points or lines shown hereon to true boundary locations.

Sheet 1 of 1
 Cadme MB: 71-4