

14656.TIF

Street:

NEW RIDGE DRIVE

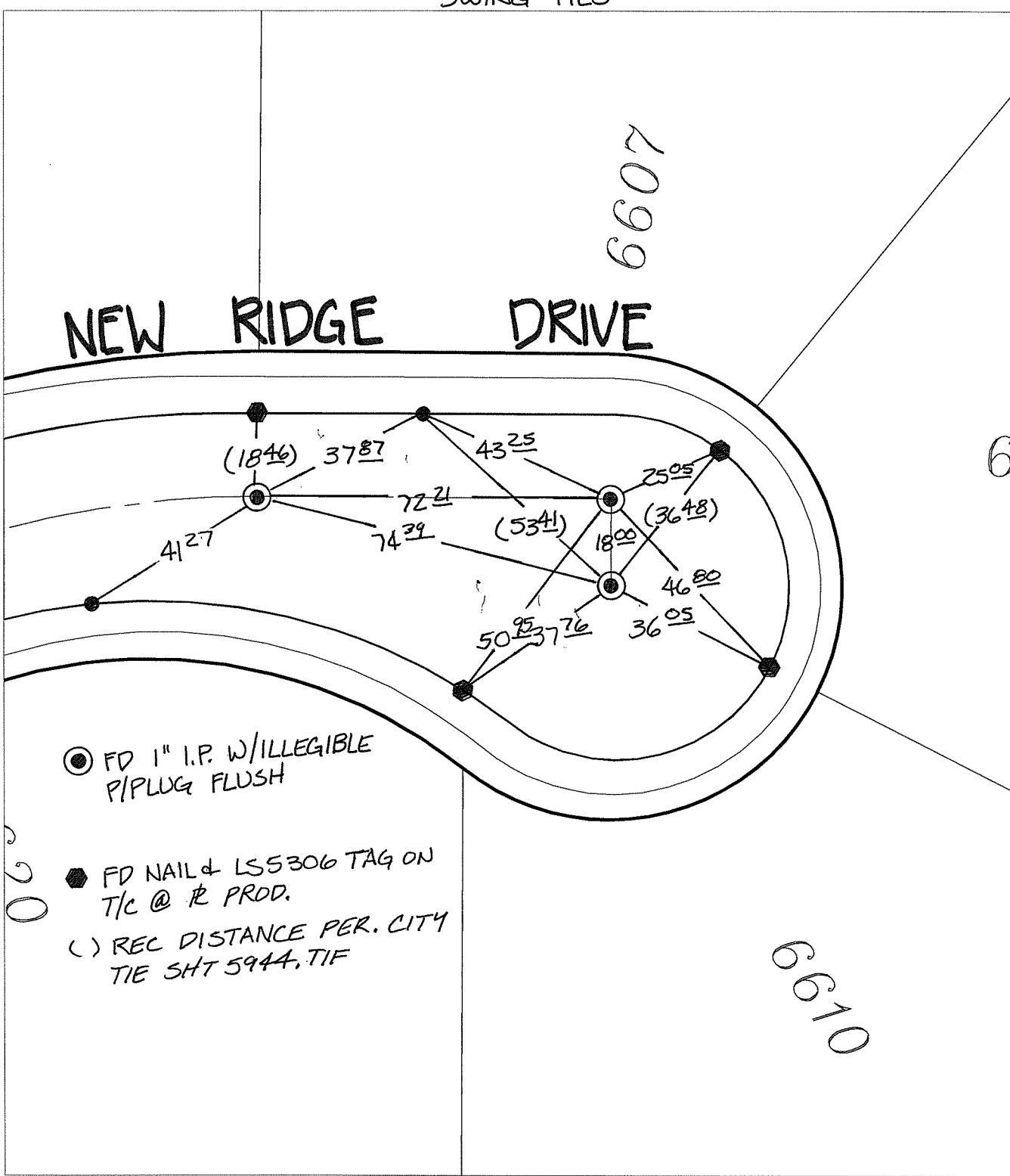
X-Street:
OFFICIAL USE ONLY

CUL-DE-SAC

SWING TIES

6609

NEW RIDGE DRIVE



● FD 1" I.P. w/ILLEGIBLE P/PLUG FLUSH
 ● FD NAIL & LS5306 TAG ON T/C @ R PROD.
 () REC DISTANCE PER. CITY TIE SH 5944.TIF

6610

- ✕ FD. Ramset Nail on T/C
- FD. LD. & TK. on T/C
- FD. "C" Nail on T/C
- Set LD. & TK. on T/C

P.K. and City Engineer tag to be set @ surface after street construction is complete. (If possible)

Scale: 1" = 30'
 Date: 11/25/16
 Drawn by: pw
 F.B.:
 TR-Sec: T3SR4W-7

OFFICIAL TIE PLAT

CITY OF RIVERSIDE

These ties are for the purpose of perpetuating the found monumentation. No claim is made as to the relationship of the points or lines shown hereon to true boundary locations.



Sheet 1 of 1
 Cadme MB: 71-4