

14659.TIF

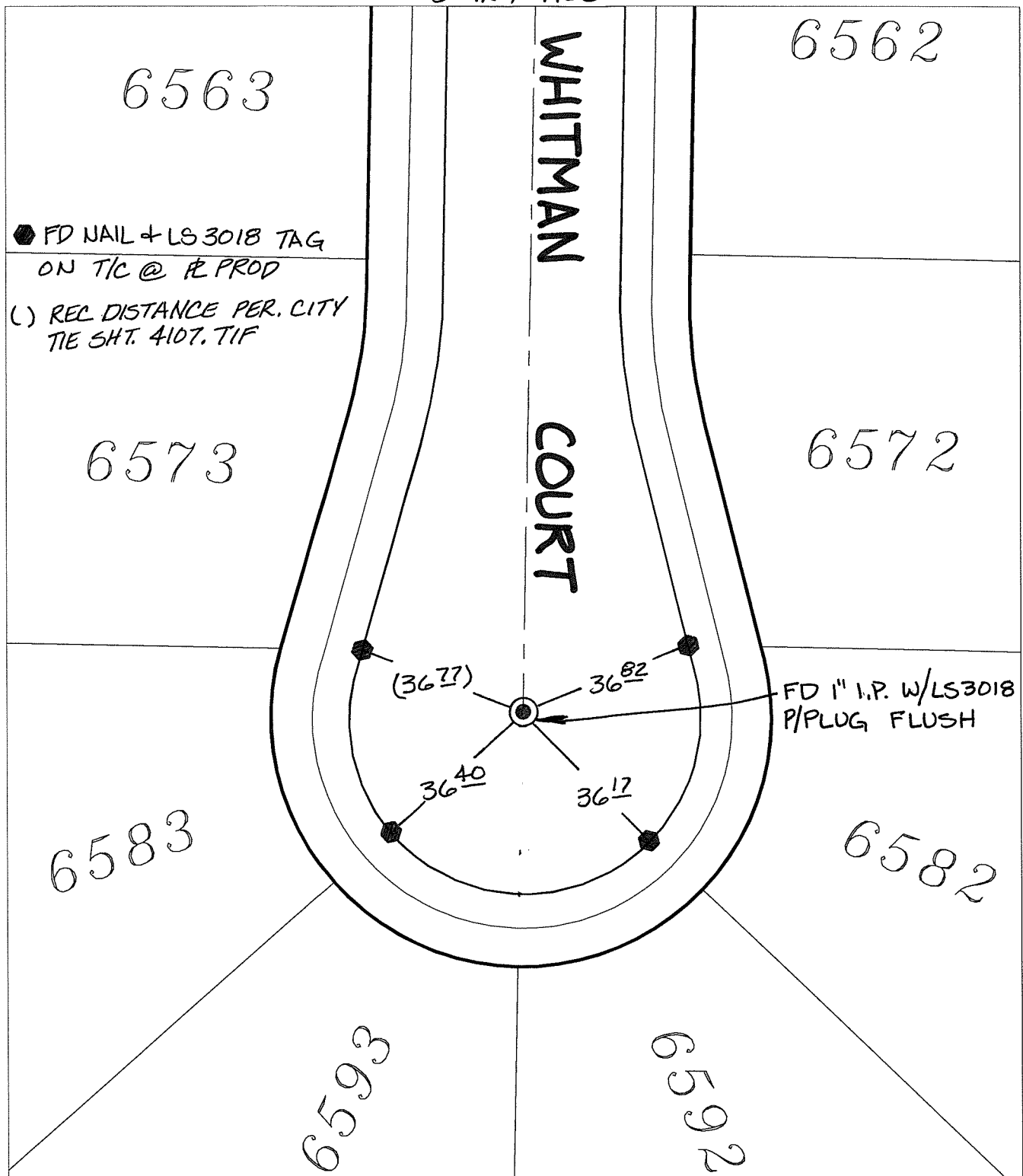
Street:

WHITMAN COURT

X-Street:
OFFICIAL USE ONLY

CUL-DE-SAC

SWING TIES



● FD NAIL + LS3018 TAG
ON T/C @ R PROD
() REC DISTANCE PER. CITY
TIE SHT. 4107, TIF

FD 1" I.P. W/LS3018
P/PLUG FLUSH


- ✕ FD. Ramset Nail on T/C
- FD. LD. & TK. on T/C
- FD. "C" Nail on T/C
- Set LD. & TK. on T/C

P.K. and City Engineer tag to be set @
surface after street construction is
complete. (If possible)

Scale: 1" = 30'
Date: 11/25/16
Drawn by: pw
F.B.:
TR-Sec: T3SR4W-6

OFFICIAL TIE PLAT
CITY OF RIVERSIDE

*These ties are for the purpose of perpetuating the found
monumentation. No claim is made as to the relationship of
the points or lines shown hereon to true boundary locations.*



Sheet 1 of 1
Cadme MB: 71-2