

# SWING TIES

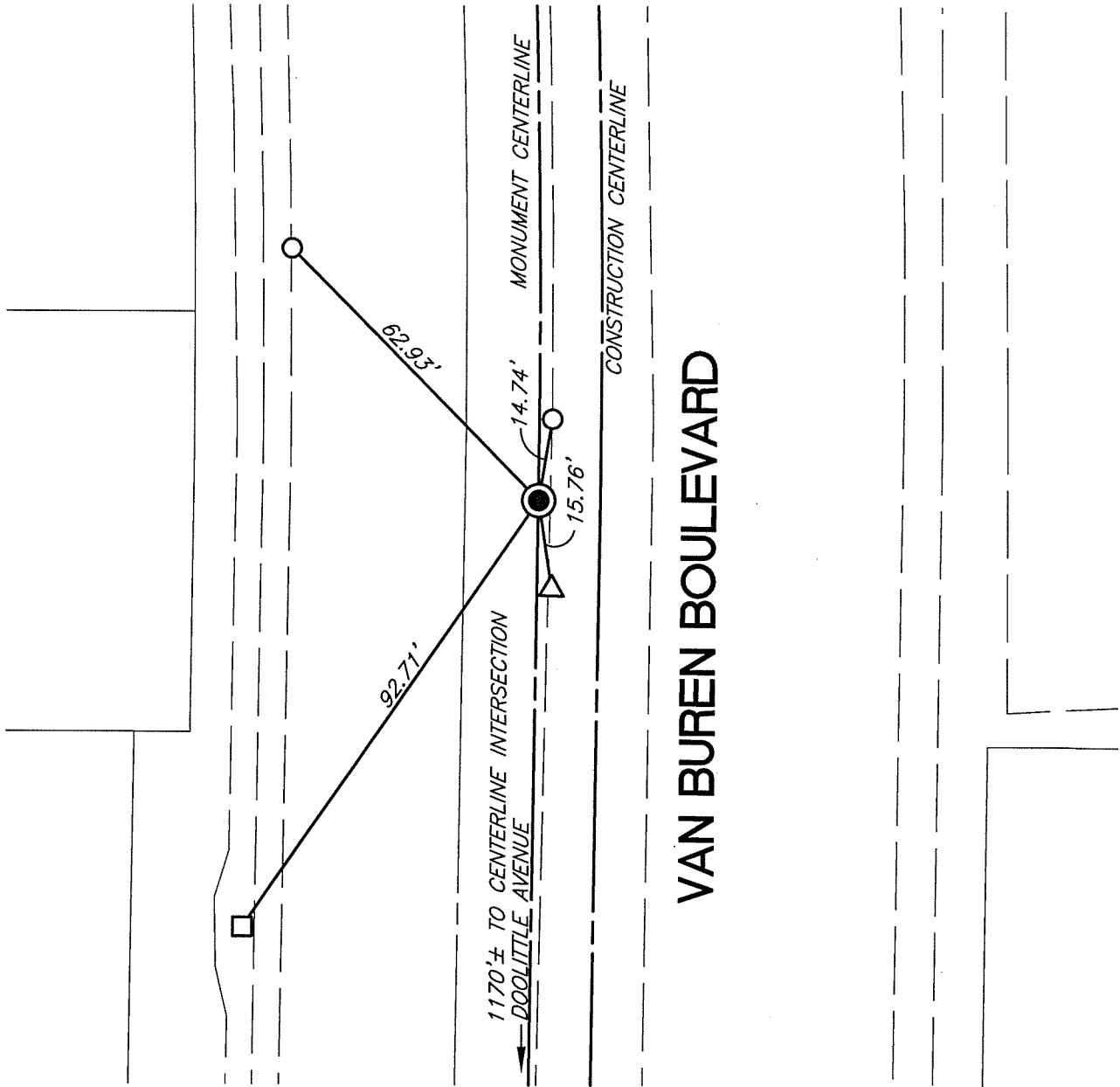
14662.TIF

STREET: VAN BUREN BOULEVARD X-STREET:

OFFICIAL USE ONLY

BC 1170'± NORTHERLY  
OF DOOLITTLE AVENUE

VAN BUREN BOULEVARD



- △ - SET CTT IN BACK OF CURB
- - SET CTT IN T.C.
- - SET MAG NAIL ● NW CORNER STREET LIGHT BASE
- - FOUND 3/4" I.P. TAGGED 'LS 3163', DN. 0.40' PER PMB 122/14-15, SET MAG NAIL AND RIVERSIDE CITY SURVEYOR WASHER, AFTER CONSTRUCTION

SCALE: 1"=30'  
 DATE: JULY 14, 2017  
 DRAWN BY: JDF  
 F.B.:  
 SEC: 31 T.2S.,R.5W

## OFFICIAL TIE PLAT CITY OF RIVERSIDE

THESE TIES ARE FOR THE PURPOSE OF PERPETUATING THE FOUND MONUMENTATION. NO CLAIM IS MADE AS THE RELATIONSHIP OF THE POINTS OR LINES SHOWN HEREON TO TRUE BOUNDARY LOCATIONS



SHEET 1 OF 1