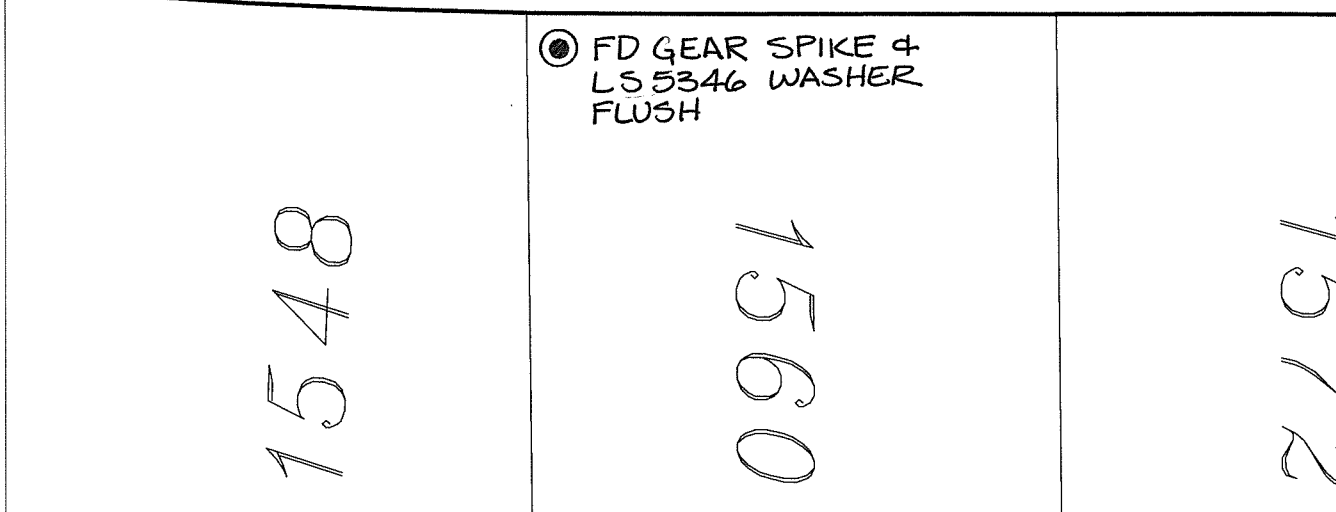
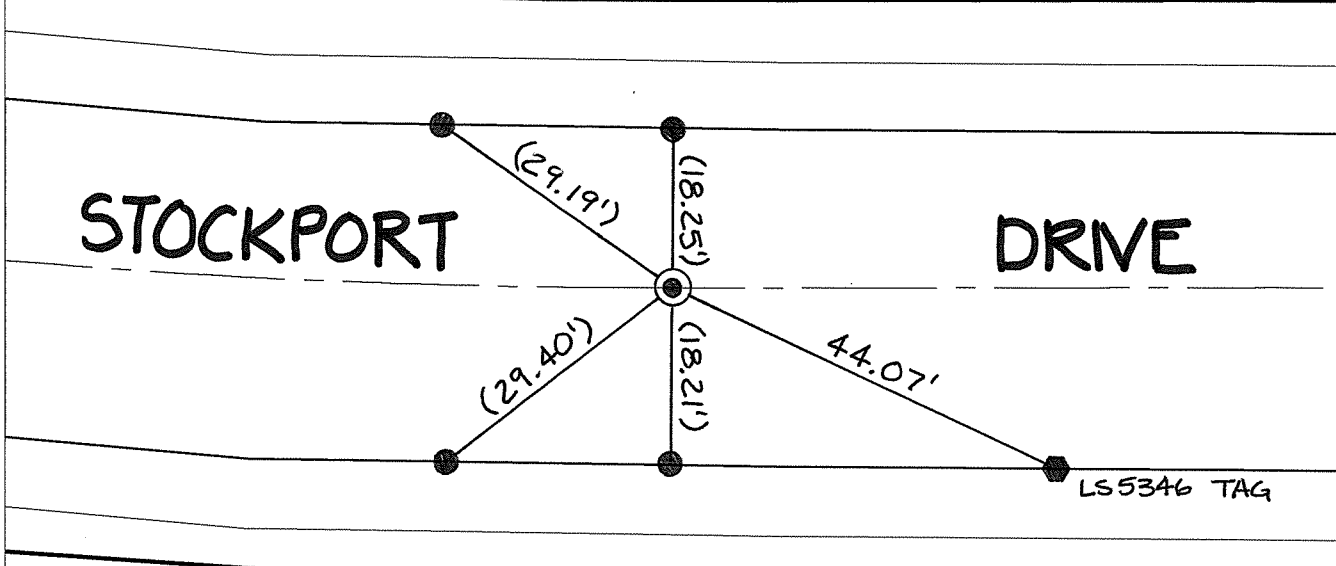
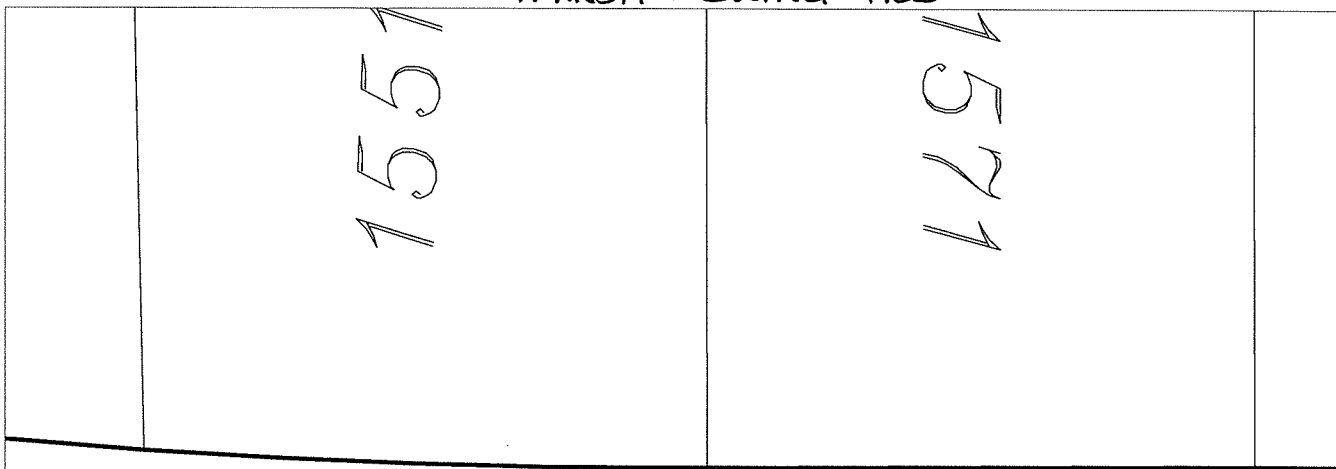


14670.TIF

Street: STOCKPORT DRIVE X-Street/E EAST OF KENDRICK DR OFFICIAL USE ONLY

TRANSIT + SWING TIES



FD GEAR SPIKE & LS 5346 WASHER FLUSH  
 Set LD. & TK. on T/C

FD. Ramset Nail on T/C     FD. LD. & TK. on T/C    P.K. and City Engineer tag to be set @ surface after street construction is complete. (If possible)  
 FD. "C" Nail on T/C     Set LD. & TK. on T/C

Scale: 1" = 20'  
 Date: 09/30/16  
 Drawn by: pw  
 F.B.:  
 TR-Sec: T3SR4W-4

**OFFICIAL TIE PLAT**  
**CITY OF RIVERSIDE**  
*These ties are for the purpose of perpetuating the found monumentation. No claim is made as to the relationship of the points or lines shown hereon to true boundary locations.*

Sheet 1 of 1  
 Cadme MB: 58-5