

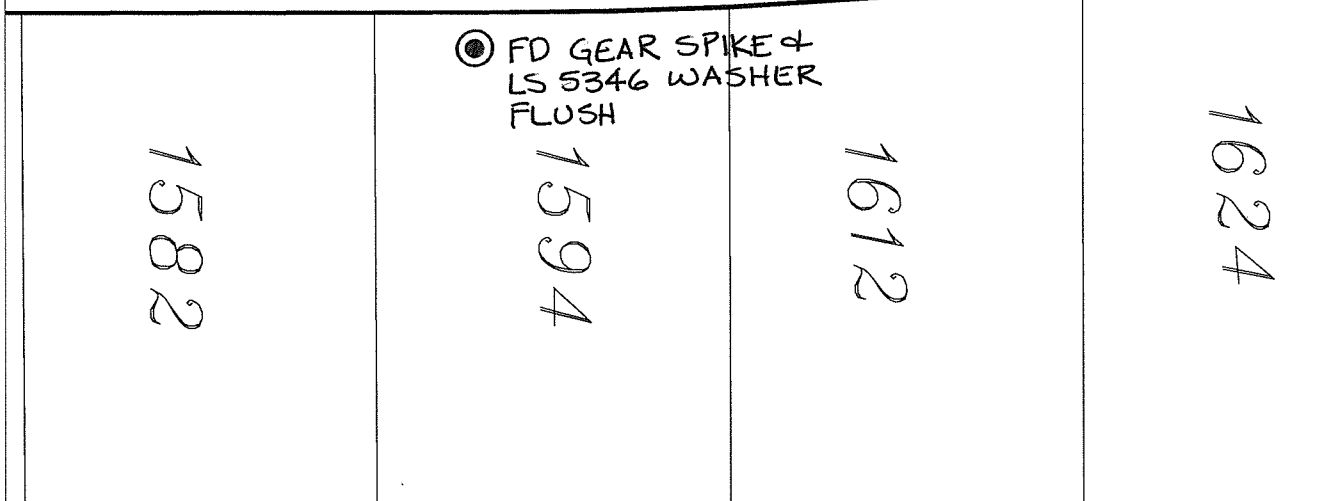
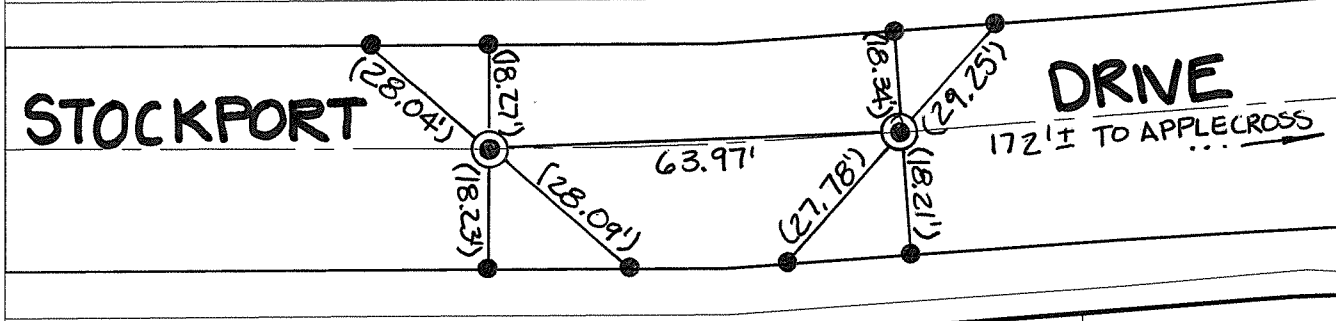
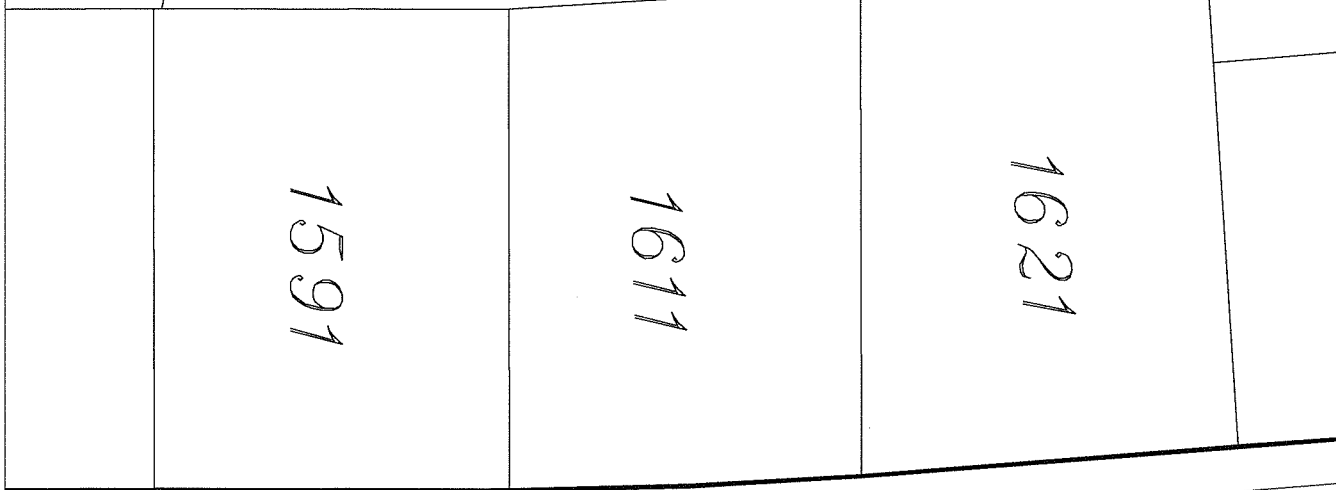
14672.TIF

Street: STOCKPORT DRIVE

OFFICIAL USE ONLY X-Street BC & EC W OF APPLECROSS

SWING TIES

( ) - REC DISTANCE PER. CITY TIE SHT. 264.TIF



- ✕ FD. Ramset Nail on T/C
  - FD. LD. & TK. on T/C
  - FD. "C" Nail on T/C
  - Set LD. & TK. on T/C
- P.K. and City Engineer tag to be set @ surface after street construction is complete. (If possible)

Scale: 1" = 30'  
 Date: 09/30/16  
 Drawn by: pw  
 F.B.:  
 TR-Sec: T3SR4W-4

**OFFICIAL TIE PLAT**  
**CITY OF RIVERSIDE**

*These ties are for the purpose of perpetuating the found monumentation. No claim is made as to the relationship of the points or lines shown hereon to true boundary locations.*

Sheet 1 of 1  
 Cadme MB: 58-5