

14681.TIE

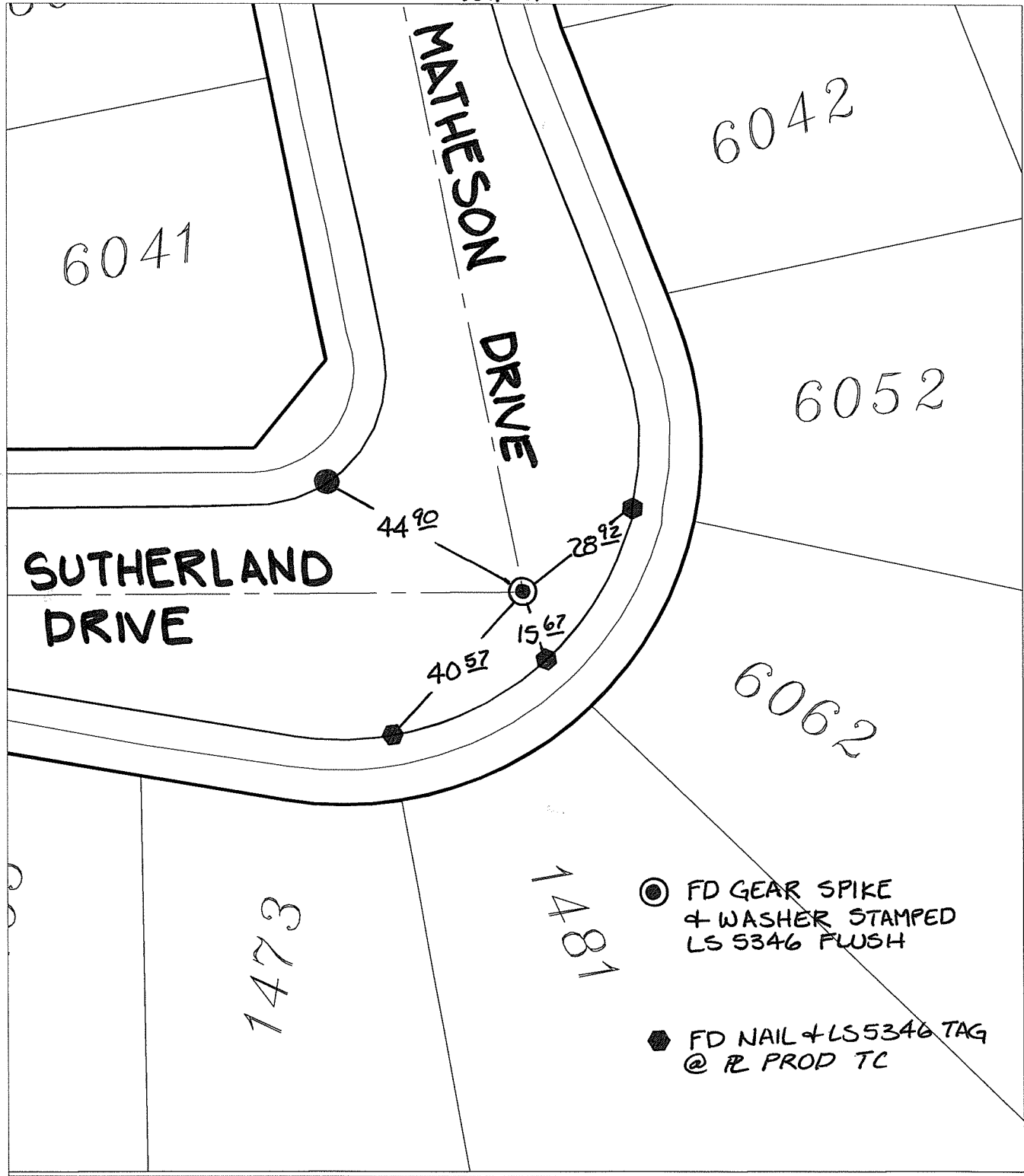
Street:

SUTHERLAND DRIVE

X-Street:  
OFFICIAL USE ONLY

MATHESON DRIVE

SWING TIES



⊙ FD GEAR SPIKE  
+ WASHER STAMPED  
LS 5346 FLUSH

◆ FD NAIL + LS 5346 TAG  
@ R PROD TC

- ✕ FD. Ramset Nail on T/C
- FD. LD. & TK. on T/C
- FD. "C" Nail on T/C
- Set LD. & TK. on T/C

P.K. and City Engineer tag to be set @  
surface after street construction is  
complete. (If possible)

Scale: 1" = 30'  
 Date: 06/06/16  
 Drawn by: pw  
 F.B.:  
 TR-Sec: T3SR4W-4

## OFFICIAL TIE PLAT

### CITY OF RIVERSIDE

*These ties are for the purpose of perpetuating the found  
 monumentation. No claim is made as to the relationship of  
 the points or lines shown hereon to true boundary locations.*



Sheet 1 of 1  
 Cadme MB: 58-5