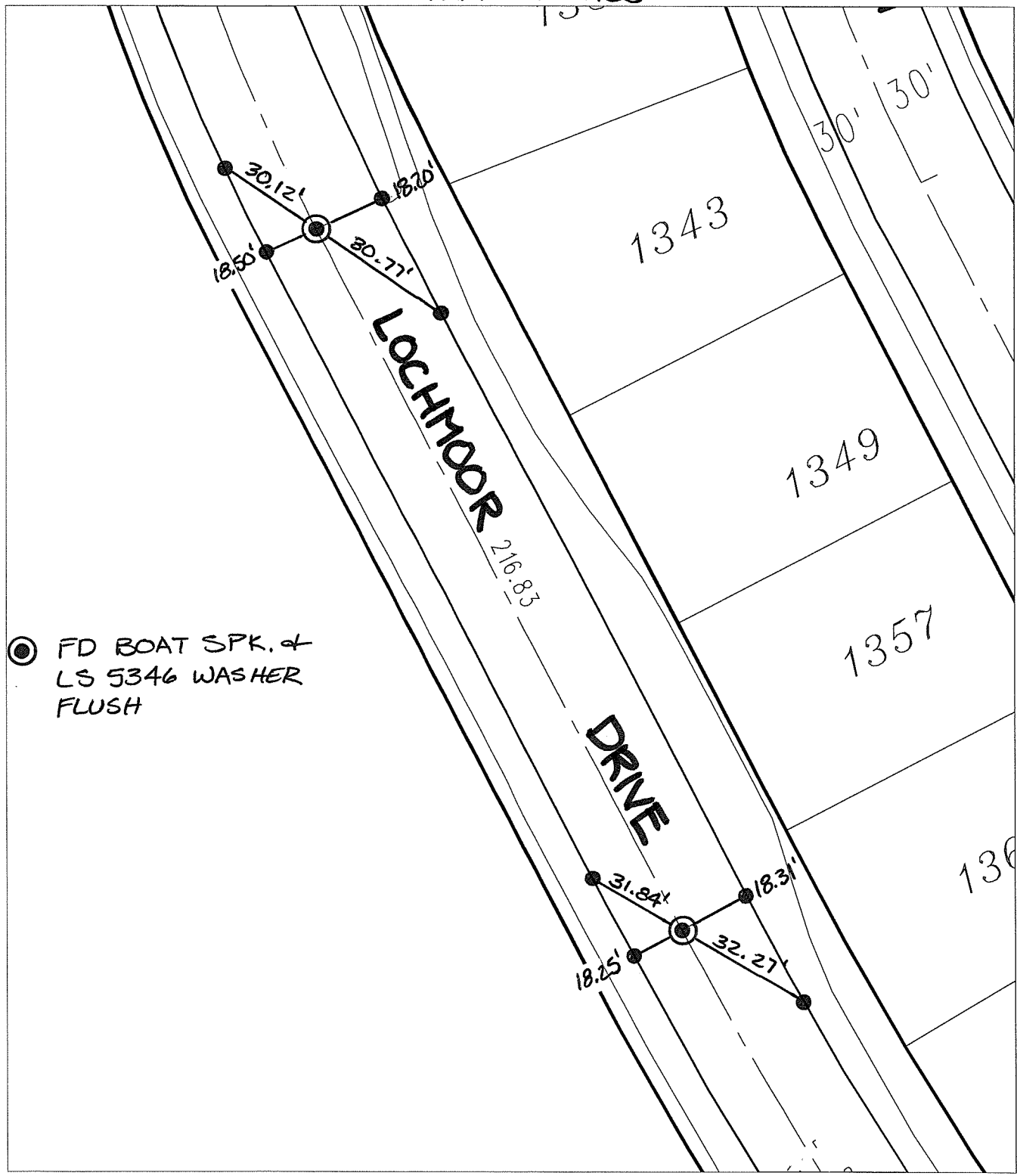


14682.TIF

Street: LOCHMOOR DRIVE EC & BC X-Street 581 +/- W. OF KIRKMICHAEL

OFFICIAL USE ONLY

TRANSIT TIES



⊙ FD BOAT SPK. & LS 5346 WASHER FLUSH

- ✕ FD. Ramset Nail on T/C
  - FD. LD. & TK. on T/C
  - FD. "C" Nail on T/C
  - Set LD. & TK. on T/C
- P.K. and City Engineer tag to be set @ surface after street construction is complete. (If possible)*

Scale: 1" = 40'

Date: 01/21/15


Drawn by: pw

F.B.:

TR-Sec: T2SR4W-33

**OFFICIAL TIE PLAT**  
CITY OF RIVERSIDE

*These ties are for the purpose of perpetuating the found monumentation. No claim is made as to the relationship of the points or lines shown hereon to true boundary locations.*



Sheet 1 of 1

Cadme MB: 57-4