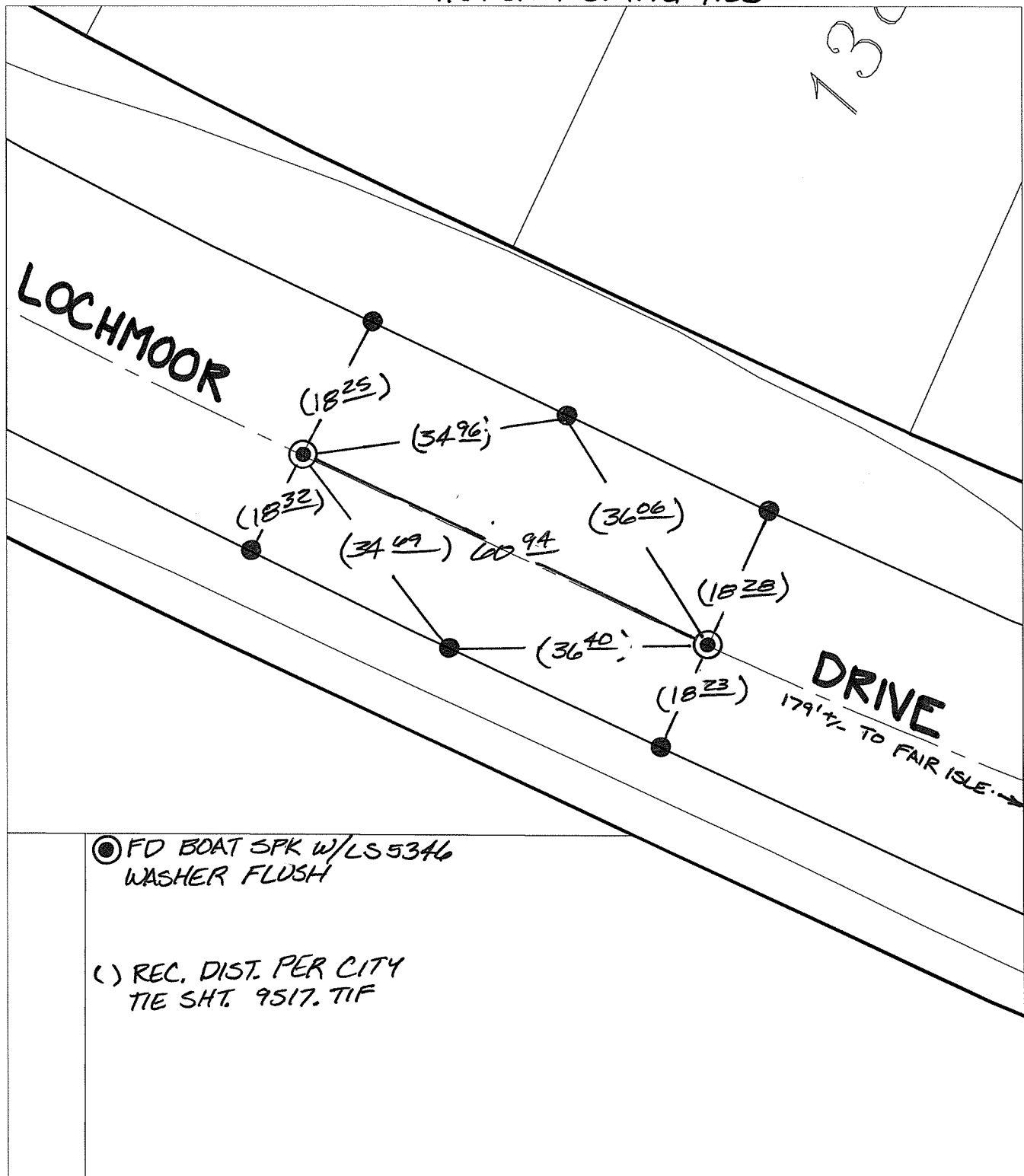


14683.TIF

Street: LOCHMOOR DRIVE BC & EC X-Street: 179' +/- W OF FAIR ISLE DR

OFFICIAL USE ONLY

TRANSIT & SWING TIES



⊙ FD BOAT SPK W/LS 5346
WASHER FLUSH

() REC. DIST. PER CITY
TIE SHT. 9517. TIF

- ✕ FD. Ramset Nail on T/C ● FD. LD. & TK. on T/C
- FD. "C" Nail on T/C ○ Set LD. & TK. on T/C

P.K. and City Engineer tag to be set @
surface after street construction is
complete. (If possible)

Scale: 1" = 20'
 Date: 01/21/15
 Drawn by: pw
 F.B.:
 TR-Sec: T2SR4W-33

OFFICIAL TIE PLAT

CITY OF RIVERSIDE

*These ties are for the purpose of perpetuating the found
 monumentation. No claim is made as to the relationship of
 the points or lines shown hereon to true boundary locations.*



Sheet 1 of 1
 Cadme MB: 58-3