

14684.TIF

Street:

LOCHMOOR DRIVE B.C.

X-Street: S. OF KIRKMICHAEL CIR.

OFFICIAL USE ONLY

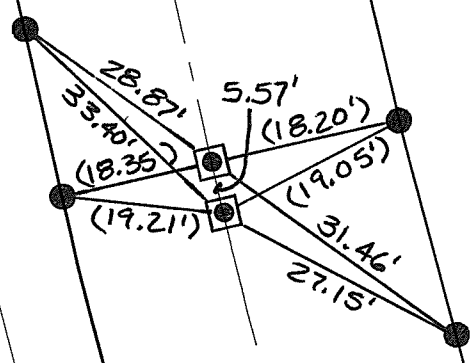
TRANSIT & SWING TIES

LOCHMOOR
187± TO KIRKMICHAEL

TRACT BNDY.

DRIVE

() REC. DIST. PER.
CITY TIE SHT.
10783.TIF



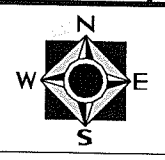
- ✕ FD. Ramset Nail on T/C ● FD. LD. & TK. on T/C P.K. and City Engineer tag to be set @ surface after street construction is complete. (If possible)
- FD. "C" Nail on T/C ○ Set LD. & TK. on T/C

Scale: 1" = 20'
 Date: 04/20/16
 Drawn by: pw
 F.B.:
 TR-Sec: T2SR4W-33

OFFICIAL TIE PLAT

CITY OF RIVERSIDE

These ties are for the purpose of perpetuating the found monumentation. No claim is made as to the relationship of the points or lines shown hereon to true boundary locations.



Sheet 1 of 1
 Cadme MB: 57-4