

14686.TIF

Street:

CANMORE COURT

OFFICIAL USE ONLY

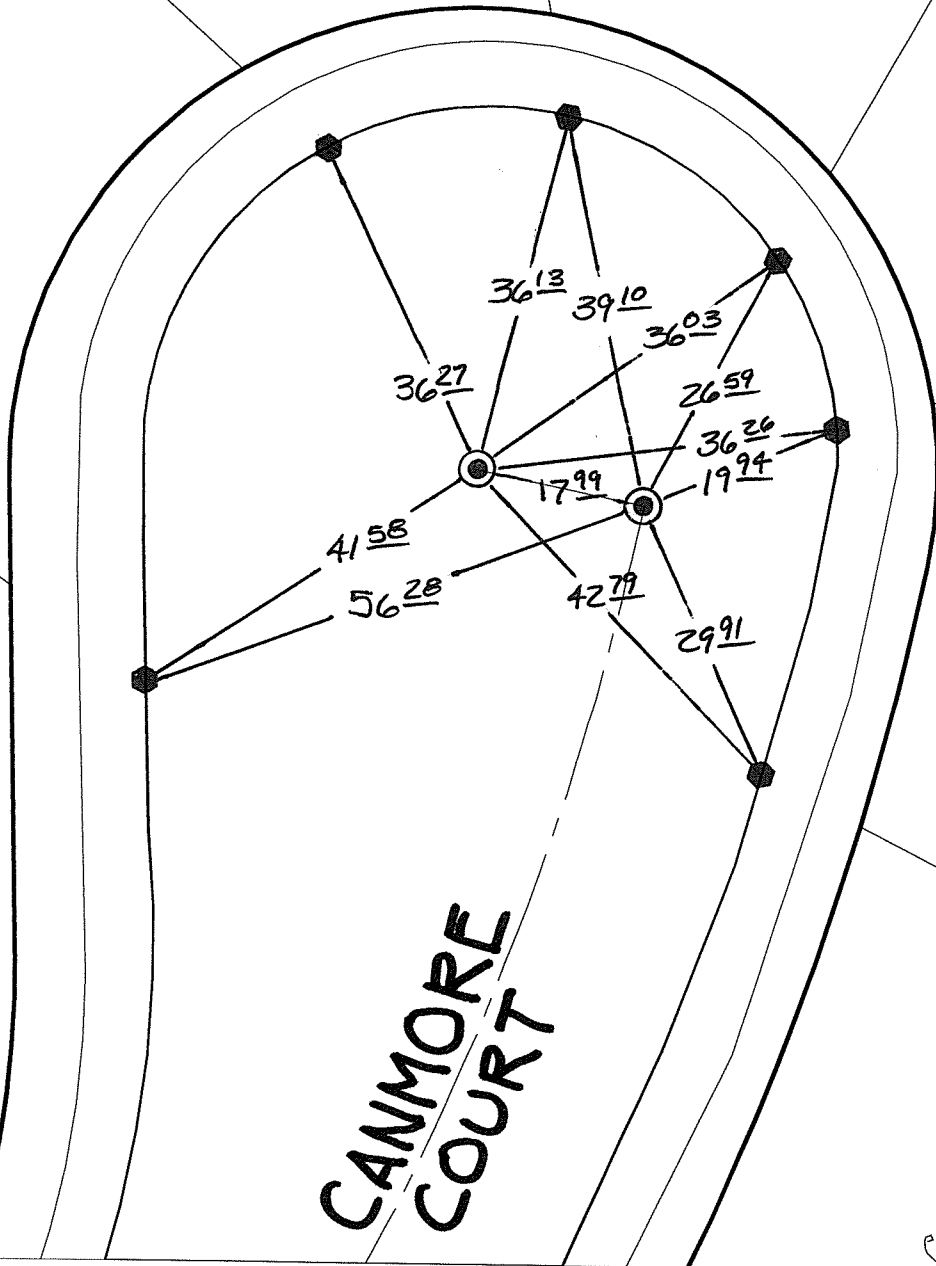
X-Street:

CUL-DE-SAC

SWING TIES

● FD LS 5346 TAG @
R PROD ON T/C

○ FD GEAR SPK W/LS 5346
WASHER FLUSH



- × FD. Ramset Nail on T/C
- FD. LD. & TK. on T/C
- FD. "C" Nail on T/C
- Set LD. & TK. on T/C

P.K. and City Engineer tag to be set @
surface after street construction is
complete. (If possible)

Scale: 1" = 20'

Date: 05/19/16

Drawn by: pw

F.B.:

TR-Sec: T2SR4W-33

OFFICIAL TIE PLAT CITY OF RIVERSIDE

*These ties are for the purpose of perpetuating the found
monumentation. No claim is made as to the relationship of
the points or lines shown hereon to true boundary locations.*



Sheet 1 of 1

Cadme MB: 57-2