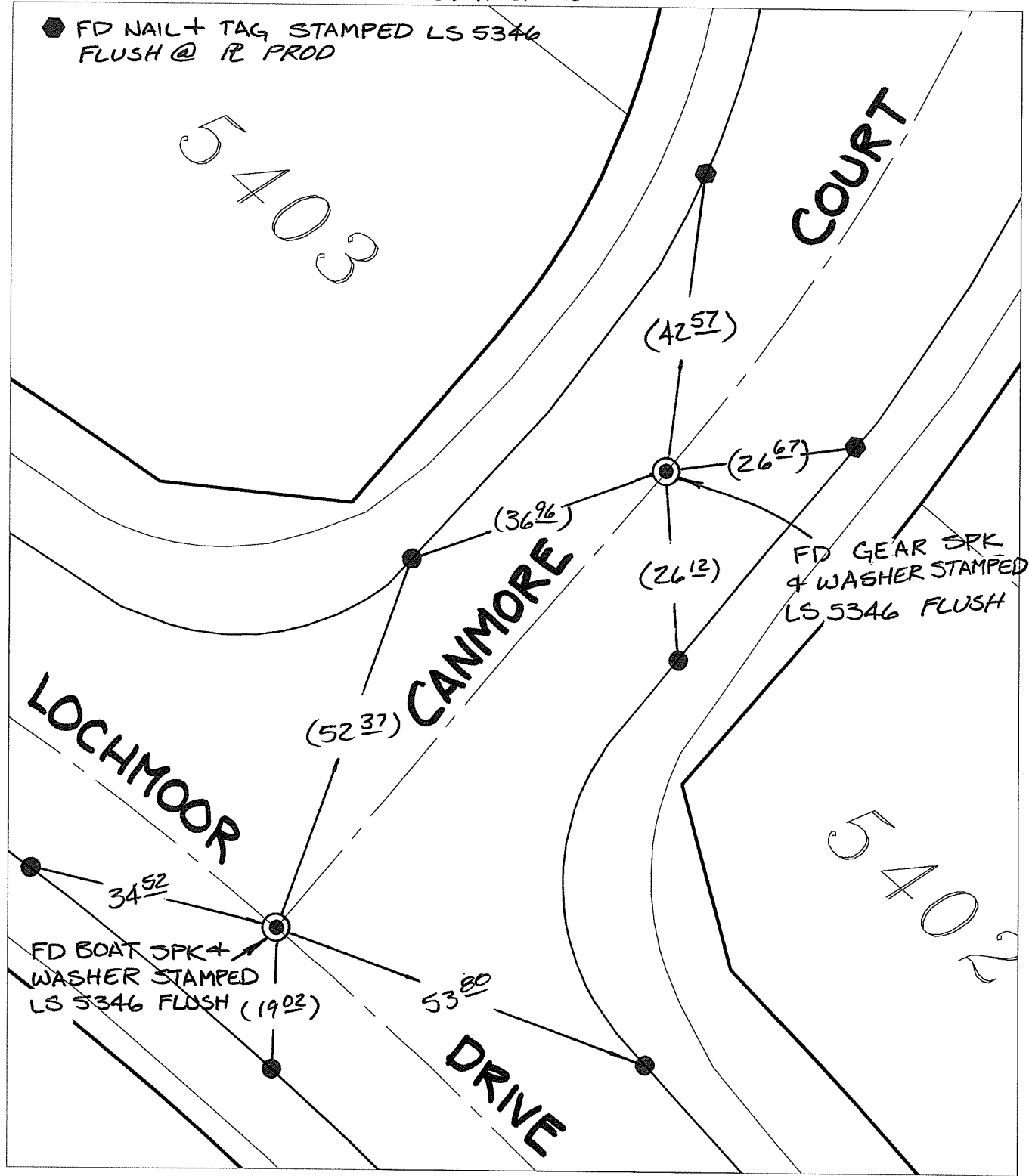


14687.TIF

Street: LOCHMOOR DRIVE X-Street: CANMORE COURT
OFFICIAL USE ONLY

SWING TIES

● FD NAIL + TAG STAMPED LS 5346
FLUSH @ R PROD



- ✕ FD. Ramset Nail on T/C
- FD. LD. & TK. on T/C
- FD. "C" Nail on T/C
- Set LD. & TK. on T/C

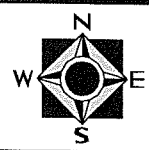
P.K. and City Engineer tag to be set @ surface after street construction is complete. (If possible)

Scale: 1" = 20'
 Date: 05/19/16
 Drawn by: pw
 F.B.:
 TR-Sec: T2SR4W-33

OFFICIAL TIE PLAT

CITY OF RIVERSIDE

These ties are for the purpose of perpetuating the found monumentation. No claim is made as to the relationship of the points or lines shown hereon to true boundary locations.



Sheet 1 of 1
 Cadme MB: 57-2