

14695.TIF

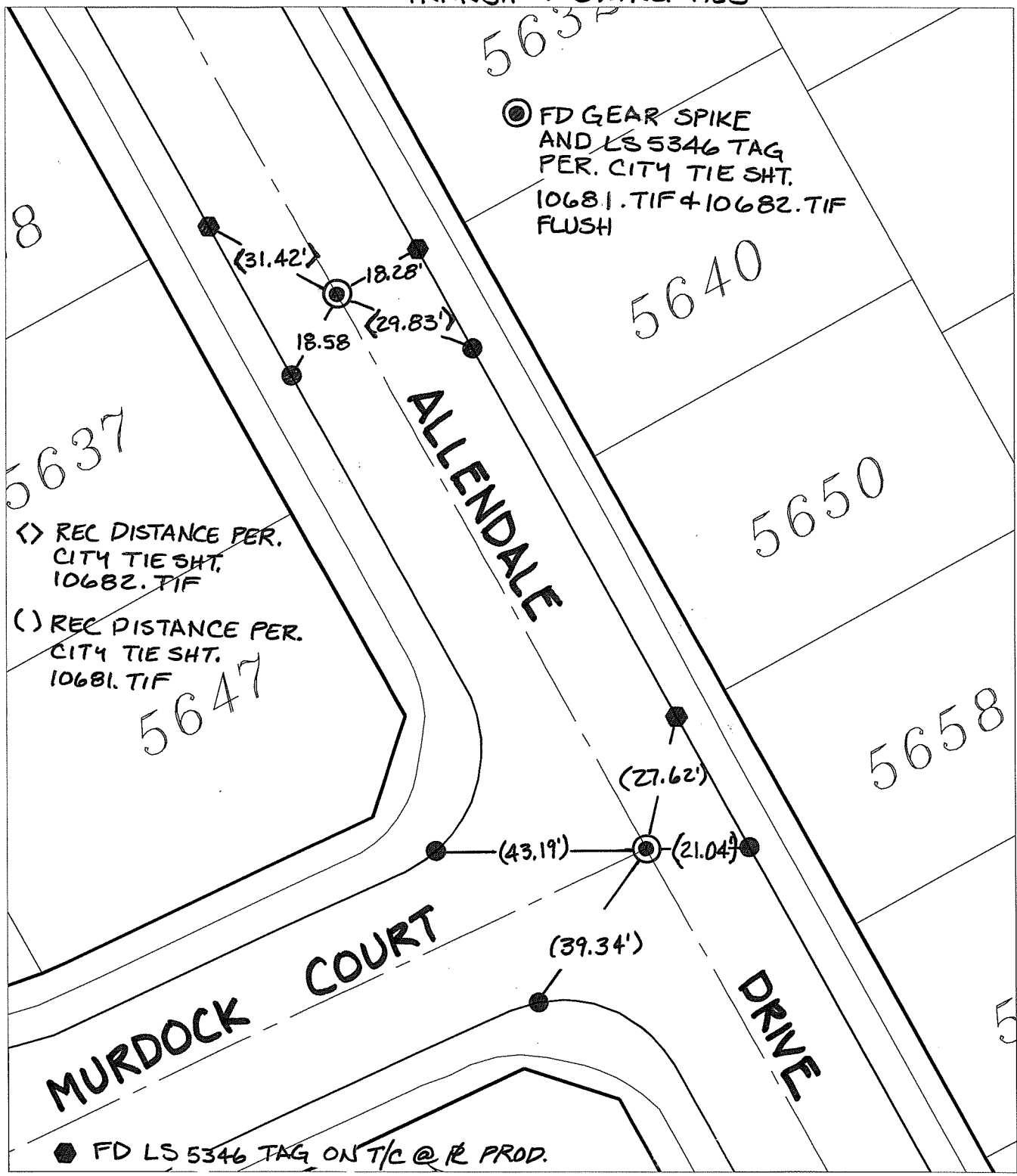
Street:

ALLENDALE DRIVE

X-Street: OFFICIAL USE ONLY

MURDOCK COURT

TRANSIT & SWING TIES



- ✕ FD. Ramset Nail on T/C
  - FD. LD. & TK. on T/C
  - FD. "C" Nail on T/C
  - Set LD. & TK. on T/C
- P.K. and City Engineer tag to be set @ surface after street construction is complete. (If possible)

Scale: 1" = 30'

Date: 09/11/16


Drawn by: pw

F.B.:

TR-Sec: T2SR4W-33

**OFFICIAL TIE PLAT**  
CITY OF RIVERSIDE

*These ties are for the purpose of perpetuating the found monumentation. No claim is made as to the relationship of the points or lines shown hereon to true boundary locations.*



Sheet 1 of 1

Cadme MB: 58-3